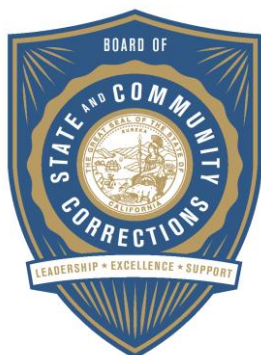


# JUVENILE DETENTION PROFILE SURVEY

.....

**First Quarter Calendar Year 2012**  
**Survey Results**



## **BOARD OF STATE AND COMMUNITY CORRECTIONS**

**FACILITIES STANDARDS AND OPERATIONS DIVISION**  
600 Bercut Drive, Sacramento, CA 95811  
916.445.5073 **PHONE**  
916.327.3317 **FAX**  
[bscc.ca.gov](http://bscc.ca.gov)

Leadership



Excellence



Support

## EXPLANATION OF RESULTS

The following pages contain the Juvenile Detention Profile Survey results for the First Quarter of Calendar Year 2012. Page 3 contains totals for major categories such as Highest One-Day Population, Average Daily Population (ADP), gender, and the age range of detained minors. Page 4 contains information regarding counties' ADP and Rated Capacity (RC) breakouts and Page 5 contains information about a wide range of juvenile detention facility issues including crowding, mental health needs, average length of stay, and number of bookings.

**Pages 6, 7, and 8 contain trend information compiled from calendar year 2007 through calendar year 2011. The trend data is separated into Juvenile Hall related data and Camp related data.**

Please keep the following in mind when reviewing this information:

- For Overall Capacity, Crowding (highest one-day population – the count of minors in detention on the day of each county's highest population) and ADP (the average daily detention population for the reporting period), we have complete data from all jurisdictions in the state that operate juvenile detention facilities.
- Each jurisdiction provides us with the average population, computed across all the days in the month, for each of the three months in the quarter. The weighted average across the three months is then computed for each jurisdiction (with the monthly averages weighted by the number of days in the month). The jurisdictions ADPs are then combined to produce the state's total ADP.
- For some variables (other than ADP), we did not receive complete data from all jurisdictions. In such instances, we used statistical procedures to estimate the statewide total.
- Felony/misdemeanor, gender counts, and age-range breakouts are based upon a one-day snapshot (on the 15th day of the final month of the quarter). These values are used to determine the percentage of the population in each felony/misdemeanor, gender, and age category. The percentages are then applied to the Total ADP to project the expected ADP in each of the felony/misdemeanor, gender, and age-range categories.
- In addition to the population breakdowns for juvenile halls and camps, the report contains like information for youth who were part of non-facility based, alternative to detention programs. Youth in that category are listed under "Other Detention." Other detention includes home supervision with and without electronic monitoring, day reporting centers, work programs and other alternatives to detention **for which youth are credited with custody time.**
- **Please note:**
  - In early 2011, eight regional trainings were held for county reporters and contributors to the JDPS. When interpreting the JDPS results from the 2nd quarter of 2011 forward, please consider that the clarification of variable definitions and calculations which occurred at those trainings may explain some unanticipated differences when compared to prior quarters.
  - Each quarter, every county with juvenile detention facilities submits their data to the Board of State and Community Corrections (BSCC; *formerly Corrections Standards Authority*). While we make every effort to review data for accuracy, including contacting individual counties for clarification, the BSCC cannot be responsible for data reporting errors made at the county level.

**Board of State and Community Corrections**  
**Juvenile Detention Profile Survey - 1st Quarter, 2012**  
**Overall Capacity, Population and ADP**

<b>Overall Capacity and Population</b>								
	<b>JUVENILE HALL</b>		<b>CAMPS</b>		<b>OTHER</b>		<b>TOTAL</b>	
<b>ADP</b>	4,694.4		2,838.5		1,360.5		8,893.4	
<b>Percent of Total</b>	52.8%		31.9%		15.3%		100.0%	
<b>RC *</b>	8,098.1		4,913.5				13,011.6	
<b>High One Day</b>	5,338.0		2,947.0				8,285.0	
<b>Gender by Detention Type</b>								
	<b>JUVENILE HALL</b>		<b>CAMPS</b>		<b>OTHER</b>		<b>TOTAL</b>	
<b>GENDER</b>	<b>ADP</b>	<b>%</b>	<b>ADP</b>	<b>%</b>	<b>ADP</b>	<b>%</b>	<b>ADP</b>	<b>%</b>
<b>Male</b>	4,017.9	85.6%	2,563.1	90.3%	1,134.5	83.4%	7,715.5	86.8%
<b>Female</b>	676.4	14.4%	275.4	9.7%	226.1	16.6%	1,177.9	13.2%
<b>TOTAL</b>	4,694.4	100.0%	2,838.5	100.0%	1,360.5	100.0%	8,893.4	100.0%
<b>Disposition by Gender for Juvenile Halls</b>								
	<b>MALE</b>		<b>FEMALE</b>		<b>TOTAL</b>			
<b>DISPOSITION</b>	<b>Number</b>	<b>%</b>	<b>Number</b>	<b>%</b>	<b>Number</b>	<b>%</b>	<b>Number</b>	<b>%</b>
<b>Pre-Disposition</b>	2,064.5	51.4%	368.2	54.4%	2,432.6	51.8%		
<b>Post-Disposition</b>	1,953.4	48.6%	308.3	45.6%	2,261.7	48.2%		
<b>TOTAL</b>	4,017.9	100.0%	676.4	100.0%	4,694.4	100.0%		
<b>Disposition by Gender for Other Detention</b>								
	<b>MALE</b>		<b>FEMALE</b>		<b>TOTAL</b>			
<b>DISPOSITION</b>	<b>Number</b>	<b>%</b>	<b>Number</b>	<b>%</b>	<b>Number</b>	<b>%</b>	<b>Number</b>	<b>%</b>
<b>Pre-Disposition</b>	432.3	38.1%	80.0	35.4%	512.4	37.7%		
<b>Post-Disposition</b>	702.1	61.9%	146.0	64.6%	848.2	62.3%		
<b>TOTAL</b>	1,134.5	100.0%	226.1	100.0%	1,360.5	100.0%		
<b>Age Range by Type of Detention (One-Day Snapshot)</b>								
	<b>JUVENILE HALL</b>		<b>CAMPS</b>		<b>TOTAL</b>			
<b>AGE RANGES</b>	<b>Number</b>	<b>%</b>	<b>Number</b>	<b>%</b>	<b>Number</b>	<b>%</b>	<b>Number</b>	<b>%</b>
<b>Under 12</b>	8.0	0.2%	0.0	0.0%	8.0	0.1%		
<b>12 to 14</b>	521.0	11.2%	142.0	4.8%	663.0	8.7%		
<b>15 to 17</b>	3,682.0	79.0%	2,099.0	71.0%	5,781.0	75.9%		
<b>18 Over</b>	452.0	9.7%	716.0	24.2%	1,168.0	15.3%		
<b>TOTAL</b>	4,663.0	100.0%	2,957.0	100.0%	7,620.0	100.0%		

\* RC is Rated Capacity which is the number of beds that comply with standards set forth in Title 24, California Code of Regulations.

**County Breakout Report - 1st Quarter, 2012  
Facilities and Alternative Detention**

	<b>County</b>	<b>Rated Capacity</b>	<b>Facilities Detention</b>	<b>Other Detention</b>	<b>ADP</b>	<b>Percent of Total</b>	<b>Cumulative Percent</b>
1	Los Angeles	3,536	2,130.0	124.07	2,254.1	25.35%	25.35%
2	San Diego	1,105	697.1	217.38	914.5	10.28%	35.63%
3	Orange	743	526.6	73.93	600.5	6.75%	42.38%
4	Fresno	450	338.3	130.34	468.7	5.27%	47.65%
5	Santa Clara	538	215.1	162.79	377.9	4.25%	51.90%
6	Kern	475	329.4	2.85	332.2	3.74%	55.63%
7	Sacramento	329	182.9	142.70	325.6	3.66%	59.30%
8	San Bernardino	457	325.6	0.00	325.6	3.66%	62.96%
9	Riverside	582	271.8	21.85	293.6	3.30%	66.26%
10	Alameda	463	249.9	38.90	288.8	3.25%	69.51%
11	Contra Costa	390	241.9	0.00	241.9	2.72%	72.23%
12	Tulare	330	166.3	73.69	240.0	2.70%	74.93%
13	San Mateo	249	128.7	93.00	221.7	2.49%	77.42%
14	Monterey	190	139.7	47.38	187.1	2.10%	79.52%
15	Stanislaus	158	131.1	33.34	164.5	1.85%	81.37%
16	Santa Barbara	272	158.9	0.00	158.9	1.79%	83.16%
17	Sonoma	188	104.1	53.68	157.8	1.77%	84.93%
18	San Joaquin	224	144.0	0.00	144.0	1.62%	86.55%
19	Ventura	385	124.7	0.00	124.7	1.40%	87.96%
20	Merced	120	81.3	41.70	123.0	1.38%	89.34%
21	Solano	148	97.2	10.60	107.8	1.21%	90.55%
22	San Francisco	234	91.0	0.00	91.0	1.02%	91.57%
23	Kings	205	81.4	0.00	81.4	0.92%	92.49%
24	Madera	70	48.9	6.02	54.9	0.62%	93.11%
25	El Dorado	80	42.5	12.30	54.8	0.62%	93.72%
26	Yolo	90	39.3	13.33	52.6	0.59%	94.32%
27	Butte	60	44.7	2.32	47.0	0.53%	94.84%
28	Shasta	56	28.3	18.59	46.9	0.53%	95.37%
29	Yuba	120	40.7	0.00	40.7	0.46%	95.83%
30	Humboldt	44	27.8	11.49	39.3	0.44%	96.27%
31	Placer	58	35.1	0.00	35.1	0.39%	96.67%
32	Del Norte	62	33.7	0.00	33.7	0.38%	97.04%
33	Santa Cruz	42	23.7	6.78	30.5	0.34%	97.39%
34	Napa	50	28.0	0.00	28.0	0.32%	97.70%
35	San Luis Obispo	45	28.0	0.00	28.0	0.31%	98.02%
36	Mendocino	43	24.7	0.00	24.7	0.28%	98.29%
37	Lake	37	12.3	8.57	20.9	0.24%	98.53%
38	Tehama	40	19.8	0.00	19.8	0.22%	98.75%
39	Nevada	60	16.4	1.98	18.4	0.21%	98.96%
40	Imperial	72	16.6	0.00	16.6	0.19%	99.15%
41	Lassen	40	8.0	7.02	15.1	0.17%	99.31%
42	Siskiyou	40	13.7	0.00	13.7	0.15%	99.47%
43	Marin	40	13.2	0.00	13.2	0.15%	99.62%
44	San Benito	20	8.6	1.30	9.9	0.11%	99.73%
45	Trinity	28	8.0	0.00	8.0	0.09%	99.82%
46	Glenn	22	7.6	0.00	7.6	0.09%	99.90%
47	Inyo	14	5.9	0.00	5.9	0.07%	99.97%
48	Tuolumne	0	0.0	2.64	2.6	0.03%	100.00%
49	Mariposa	4	0.1	0.00	0.1	0.00%	100.00%
50	Mono	4	0.0	0.00	0.0	0.00%	100.00%
51	Sierra	0	0.0	0.00	0.0	0.00%	100.00%
		<b>13,012</b>	<b>7,532.9</b>	<b>1,360.5</b>	<b>8,893.4</b>	<b>100.00%</b>	

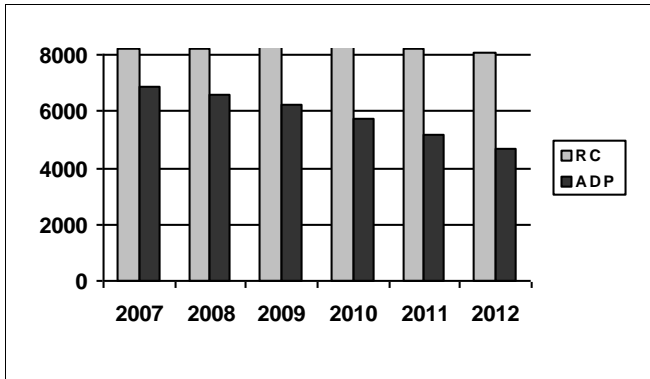
\*ADP on County Breakout Report may not equal ADP on other Summary Reports due to rounding

## Juvenile Detention Profile Survey

1st Quarter Report 2012	Rated Capacity	One Day Snapshot				Average Daily Population				
		Misdemeanor		Felony		Pre-Disposition		Post-Disposition		Total ADP
		Male	Female	Male	Female	Male	Female	Male	Female	
Juvenile Halls	8,098.1	13.9%	4.4%	31.7%	3.5%	2,064.5	368.2	1,953.4	308.3	4,694.4
Camps / Ranches	4,913.5	6.4%	1.2%	23.4%	1.9%			2,563.1	275.4	2,838.5
<b>Other Juveniles in the System</b>		<b>Male</b>	<b>Female</b>	<b>Male</b>	<b>Female</b>	<b>Male</b>	<b>Female</b>	<b>Male</b>	<b>Female</b>	<b>Total ADP</b>
Juveniles on home supervision with electronic monitoring		2.3%	0.6%	3.0%	0.5%	234.4	38.2	354.6	67.8	694.9
Juveniles on home supervision without electronic monitoring		1.7%	0.6%	2.6%	0.5%	194.0	41.1	212.2	59.9	507.3
Juveniles alternative confinement programs		0.4%	0.1%	1.0%	0.1%	4.0	0.7	135.4	18.3	158.3
<b>Grand Totals</b>		<b>24.7%</b>	<b>6.9%</b>	<b>61.8%</b>	<b>6.5%</b>	<b>2,496.8</b>	<b>448.2</b>	<b>5,218.7</b>	<b>729.7</b>	<b>8,893.4</b>
<b>Mental Health Snapshot</b>										
Number of open mental health cases this day									4,008.5	
Number of juveniles receiving psychotropic medication									1,389.8	
<b>Crowding</b>										
Average daily population of juveniles in other jurisdictions DUE TO LACK OF SPACE									0.0	
Number of juveniles released early DUE TO LACK OF SPACE									0.7	
Average number of days that one or more facilities in a county exceeded the Rated Capacity									0.0	
<b>Average Bookings Per Month</b>										
Number of Juvenile Hall bookings/admissions									6,028.5	
Number of bookings for weapon-related offenses									402.1	
Number of 601 bookings									23.2	
Number of 777 bookings									1,198.3	
Number of direct file {WIC 602(b) and 707(d)} bookings									49.0	
<b>Final Month of the Quarter (One-Day Snapshot)</b>										
Detained for 707b Offense									924.0	
Awaiting placement									459.0	
Awaiting transport to a camp									259.0	
Awaiting transfer to Youth Authority									33.0	
Court commitments to juvenile hall (Ricardo M)									584.6	
Found unfit per 707.01 WIC									75.6	
Direct files to Adult Court-602(b) and 707(d) WIC									367.0	
Hospitalized outside detention facility for MEDICAL CARE									5.0	
Hospitalized outside detention facility for MENTAL HEALTH CARE									7.0	
Believed to be criminal illegal aliens									168.3	
<b>Average Length of Stay</b>										
Juvenile Hall (all releases)									24.9	
Juvenile Hall to Camps									39.6	
Juvenile Hall to other out-of-home placements (i.e. group homes or foster homes)									46.4	
Juvenile Hall who were found unfit (per juvenile court)									284.9	
Juvenile Hall who were direct filings to adult court									265.5	
Camps (all releases)									123.1	
<b>Cumulative Total for the Quarter</b>										
<b>Detention Behavior</b>						<b>Juvenile Halls</b>		<b>Camps / Ranches</b>		<b>Other Detention</b>
Assaults by juveniles on staff						36.0		3.0		0.0
Escapes						8.0		53.0		25.3
Suicide Attempts						31.0		2.0		0.0
Suicides						1.0		0.0		0.0

# First Quarter Report, 2012 - Juvenile Hall Data

## Rated Capacity RC and ADP for Juvenile Halls

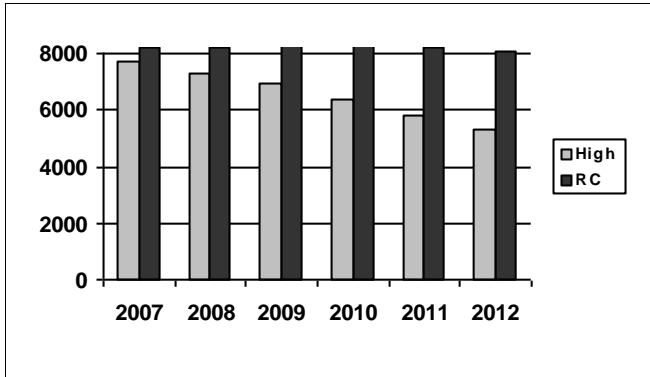


Juvenile hall average daily population continues to decline. In the last 6 years, ADP has decreased by 33%.

Summary of Juvenile Hall ADP				
2007	2008	2009	2010	2011
6,858	6,614	6,197	5,722	5,137

2012 Summary of Juvenile Hall ADP				
Q1				Average
4,694				4,694

## Juvenile Hall Highest One-Day Population and RC

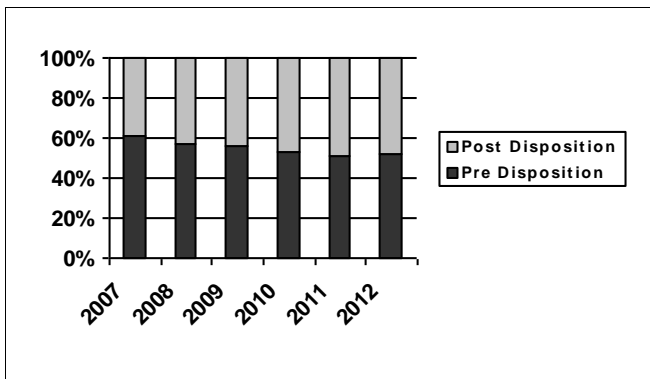


The high day population of California juvenile halls continues to decrease. The widening difference between rated capacity and "high day" has allowed many juvenile halls to leave some units vacant or convert them to other uses.

Summary of Juvenile Hall Highest One Day				
2007	2008	2009	2010	2011
7,686	7,317	6,915	6,387	5,795

2012 Summary of Highest One-Day Population				
Q1				Average
5,338				5,338

## Pre-Disposition in Juvenile Halls



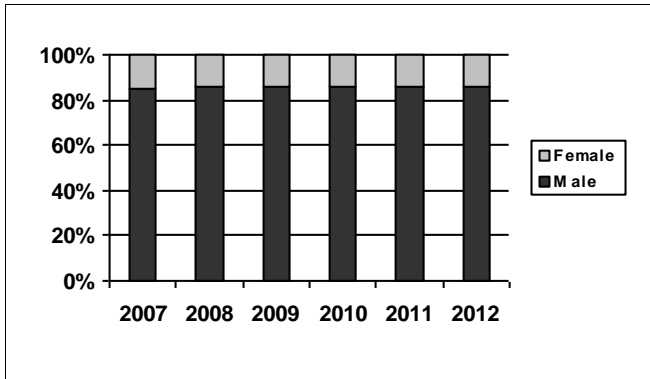
The percentage of youth who are being detained in a pre-disposition status increased only slightly in the 1st quarter. Where once pre-disposition youth outnumbered the post-disposition youth by more than 10%, those percentages are now nearly equal.

Summary of Pre-Disposition in Juvenile Halls				
2007	2008	2009	2010	2011
61%	57%	56%	53%	51%

2012 Summary of Pre-Disposition Juvenile Halls				
Q1				Average
52%				52%

# First Quarter Report, 2012 - Juvenile Hall Data

## Gender Distribution in Juvenile Halls

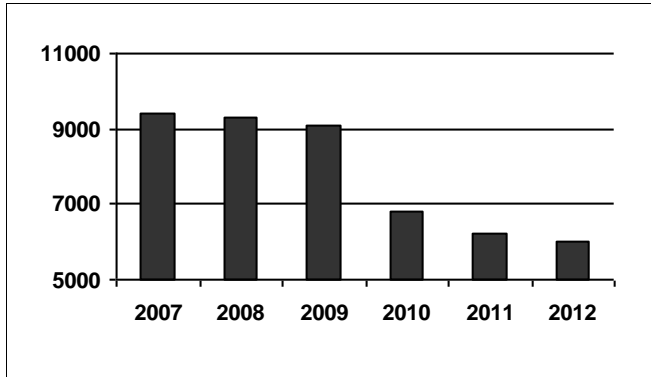


This is an area where there is the least variation in the data. Boys consistently make up 86% of juvenile hall population. Girls compose 14% of the population.

Summary of Males in Juvenile Halls				
2007	2008	2009	2010	2011
85%	86%	86%	86%	86%

2012 Summary of Males in Juvenile Hall				
Q1				Average
86%				86%

## Average Number of Juveniles Booked per Month

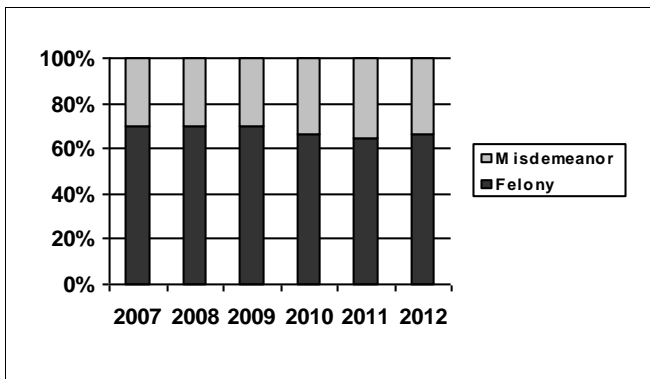


Since 2006, monthly bookings have declined by nearly 37%.

Summary of Juveniles Booked per Month				
2007	2008	2009	2010	2011
9,423	9,325	9,079	6,803	6,203

2012 Summary of Monthly Bookings				
Q1				Average
6,028				6,028

## Distribution of Charge in Juvenile Halls



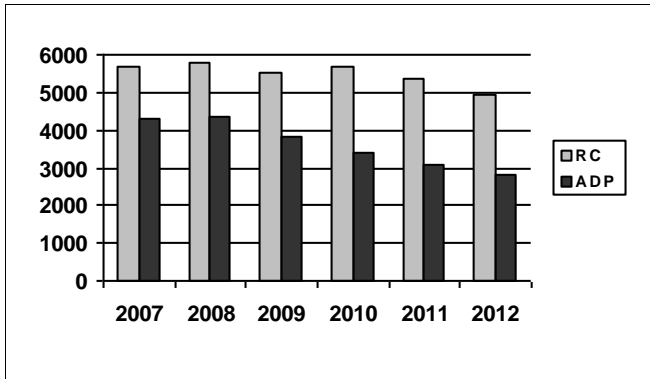
The number of youth in custody on felony charges exceeds those held on misdemeanors, though only by 1% more than the 2011 average.

Summary of Felony Charges in Juvenile Halls				
2007	2008	2009	2010	2011
70%	70%	70%	66%	65%

2012 Summary of Felony Charge Juvenile Hall				
Q1				Average
66%				66%

# First Quarter Report, 2012 - Camp Data

## RC and ADP for Camps

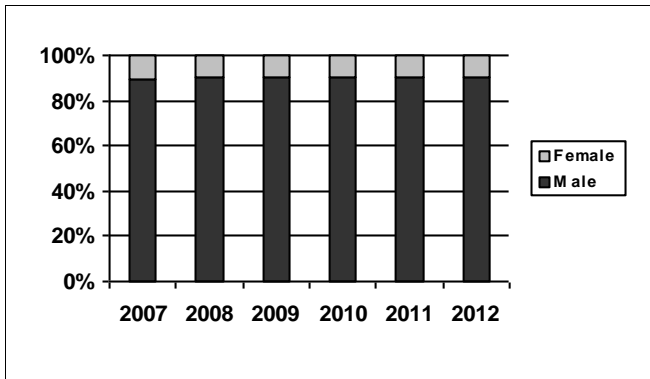


The average daily population of camps, like the juvenile halls, has decreased by 33% in the last 6 years. During that time, several county camps have closed.

Summary of Camp ADP				
2007	2008	2009	2010	2011
4,278	4,338	3,841	3,374	3,105

2012 Summary of Camp ADP				
Q1				Average
2,838				2,838

## Gender Distribution in Camps

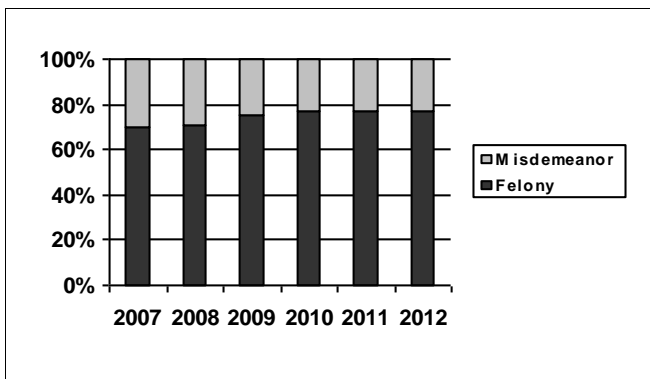


Girls continue to make up only 10% of the camp population.

Summary of Males in Camps				
2007	2008	2009	2010	2011
89%	90%	90%	90%	90%

2012 Summary of Males in Camps				
Q1				Average
90%				90%

## Distribution of Charge in Camps



Youth with felony offenses who are committed to county camps have made up 77% of the population since 2010.

Summary of Felonies in Camps				
2007	2008	2009	2010	2011
70%	71%	75%	77%	77%

2012 Summary of Felonies in Camps				
Q1				Average
77%				77%



## INSTRUCTIONS FOR INTERPRETING THE SURVEY REPORT

**The Overall Capacity, Population and ADP Page** is designed to present the Juvenile Detention Profile Survey results for the major reporting categories.

- **Capacity:** this category presents the Rated Capacity (RC) in terms of the number of beds in juvenile halls and camps/ranches that meet the Board of State and Community Corrections standards.
- **High One-Day:** each jurisdiction reports for each month in the quarter, the juvenile hall and camp/ranch populations that, together, constituted the highest one-day count of the month.
- **Other:** this category refers to the sum of all juveniles who are receiving custody credit while on home supervision with or without electronic monitoring, or in alternative confinement programs.

**The County Breakout Report Page** is designed to present county-specific information.

- **County comparison:** this page identifies the ADP for each county and the percent that county contributes to the total state juvenile detention population. The counties are ranked in descending order based on their percentage of the overall juvenile detention population in the state.

**The Additional Information Page** is designed to present all the remaining Juvenile Detention Profile Survey results not already listed.

- **One-Day Snapshot:** the percentages in this section are percentages of the total ADP for juvenile halls, camps/ranches, and other juveniles in the system.
- **Average number of days that one or more facilities in a county exceeded the Rated Capacity:** this value is the result of taking all of the counties “number of days of crowding” and averaging the figures submitted by all the jurisdictions. If a jurisdiction had no crowding days, that jurisdiction was not included in the computation. In other words, the value presented indicates the typical number of crowding days per month experienced by jurisdictions that have had one or more days of crowding in the First Quarter of Calendar Year 2012.
- **Average Length of Stay:** these numbers are averages for all juveniles in each category:
  - 1) “juvenile hall (all releases)” is computed by first taking the mean length of stay for all juveniles released from juvenile halls in a jurisdiction. Next, all the jurisdictions’ means are averaged to produce a statewide figure;
  - 2) “juvenile hall to camps/ranches” is computed in the same fashion, but includes only those juveniles released from juvenile hall and placed in a camp or ranch;
  - 3) “juvenile hall to other out-of-home placements” presents the average length of stay for that subset of juveniles.