

JAIL PROFILE SURVEY

2007, 1st QUARTER SURVEY RESULTS

**FACILITIES STANDARDS AND OPERATIONS DIVISION
CORRECTIONS STANDARDS AUTHORITY**

STATE OF CALIFORNIA
600 Bercut Drive
Sacramento, CA 95811
(916) 445-5073
www.csa.ca.gov

JAIL PROFILE SURVEY

EXPLANATION OF RESULTS

The following link titles contain the Jail Profile Survey results for the first quarter of the calendar year 2007. **Quarterly Totals** contains the first quarter totals based upon the monthly and quarterly data submitted to us by the participating jurisdictions. The next six (6) link titles show the trend data for variables we have been tracking for the last ten years (**Average Number of Persons Booked**, **Average Length of Stay**, **Average Daily Population**, **Percentage Non-Sentenced**, **Non-Sentenced ADP**, and **Sentenced ADP**). The remainder of this page provides explanations and clarifications of the data presented.

Quarterly Totals link

- Unless otherwise noted, “projected totals” are based upon the average per day for the variable in question. For example, there was an average of 82,451 inmates per day in local jails (excluding Type I’s) during the three-month span of January thru March 2007.
- For some variables (other than ADP), we did not receive complete data from all jurisdictions. In such instances, we used statistical procedures to estimate the statewide total.
- The number for “Bookings” is the average of the monthly totals for January, February, and March.
- For the following variables, the numbers presented are the totals as of the mid-quarter (i.e., February 15, 2007); Pretrial Release, Early Release, 2 and 3 Strikes, Felony Warrants, Misdemeanor Warrants, Juveniles in Custody and Undocumented Aliens.
- “Assaults” is the total number of serious inmate assaults on staff (resulting in a crime report), statewide, during the first quarter of calendar year 2007.

Average Number of Persons Booked, **Average Length of Stay**, **Average Daily Population**, **Percentage Non-Sentenced**, **Non-Sentenced ADP**, and **Sentenced ADP** links

- The data in the 10-Year Summary tables are based upon survey data which the Corrections Standards Authority has gathered since the early 1980’s.
- Prior to 1995, yearly averages were reported to the CSA on an annual basis. Yearly averages from 1996 to the present time have been the average of the 12 calendar months. In 1995, the yearly figure reported is the fourth quarter average, since we do not have data from the first three quarters.

CORRECTIONS STANDARDS AUTHORITY JAIL PROFILE SURVEY

Reporting Period: January to March, 2007

County Jail Populations

ADP ^a	82,451 ^b
Holding Areas	2,297
Average "Under the Roof" ^c	84,748 ^d
Highest One Day Count	88,066 ^e

Special Use Beds

Medical Beds	952
Mental Health Beds	3,239

County Jail Populations

Felony	65,317
Misdemeanor	17,134
Total	82,451
Non-Sentenced Males	49,596
Non-Sentenced Females	6,781
Sentenced Males	21,962
Sentenced Females	4,112
Total	82,451
Maximum Security Inmates	24,315
Medium Security Inmates	40,537
Minimum Security Inmates	17,599
Total	82,451

Released Per Month Due to Lack of Space

Pretrial Release	9,656 ^f
Early Release	8,146 ^f
Total	17,802

Inmates with 2 and 3 Strikes

2 Strike Inmates	2,175 ^g
3 Strike Inmates	879 ^g
Total	3,054

Unservd Warrants

Felony Warrants	290,389 ^g
Misdemeanor Warrants	2,279,230 ^g
Total	2,569,619

Inmates From Other Jurisdictions

Housed on Federal Contract	3,766
Housed on Contract with CDC	1,658
From Other Counties on Contract	124
Awaiting Transport	2,384
Total	7,932

Other Jail Profile Survey Variables

Bookings Per Month	108,332 ^f
Juveniles in Custody	11 ^f
Criminal / Illegal Aliens	10,728
Assaults On Staff	303

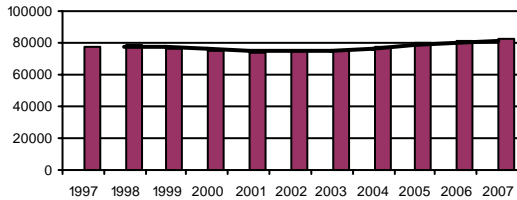
- a. The Average Daily Population for all jurisdictions (excluding Type I's) does not include inmates in holding areas.
- b. Unless otherwise indicated, the numbers reported are the average across the days in the quarter.
- c. "Under the Roof" is the sum of the Average Daily Population plus the average daily number of inmates in Holding Areas.
- d. Totals may not be the exact sum of the subtotals due to rounding.
- e. The sum of all Highest One Day inmate population counts from all jurisdictions.
- f. These data are collected on a monthly basis, this figure is an average of the total numbers collected each month during this quarter.
- g. These data are one-day snapshots collected at the end of the quarter.

Jail Profile Survey

2007

Average Daily Population

10 Year Summary									
1997	1998	1999	2000	2001	2002	2003	2004	2005	2006
76,938	79,143	76,311	75,044	73,824	75,096	75,243	76,887	79,705	81,104



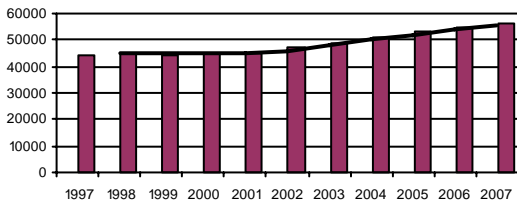
The Average Daily Population (ADP) for the first quarter of 2007 reflects an increase over the fourth quarter of 2006 and is a historical high. While there had been a slight decrease in the fourth quarter of 2006, the first quarter of 2007 reflects the continuation of the major uptrend in ADP since 2001.

Quarterly Results

	Q1	Q2	Q3	Q4	Average
2006	80,167	80,714	81,639	81,870	81,104
2007	82,451				82,451

Non-sentenced ADP

10 Year Summary									
1997	1998	1999	2000	2001	2002	2003	2004	2005	2006
44,593	45,303	44,509	44,940	45,187	47,053	49,121	50,715	53,357	54,585



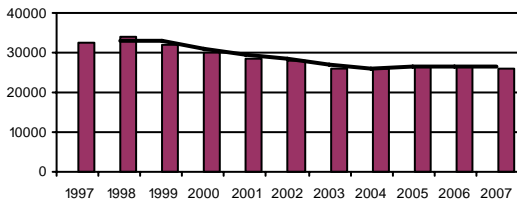
The Non-Sentenced Population ADP was 56,377 for the first quarter of 2007. Not only is this an increase from the fourth quarter of 2006, but it also reflects an increase of 4.3% over the first quarter of 2006.

Quarterly Results

	Q1	Q2	Q3	Q4	Average
2006	53,937	54,029	54,688	55,666	54,585
2007	56,377				56,377

Sentenced ADP

10 Year Summary									
1997	1998	1999	2000	2001	2002	2003	2004	2005	2006
32,347	33,841	31,802	30,109	28,637	28,043	26,121	26,171	26,347	26,519



The Sentenced ADP population reflects a slight decrease from the fourth quarter of 2007. The first quarter 2007 sentenced population also reflects a slight decrease from the first quarter 2006 averages.

Quarterly Results

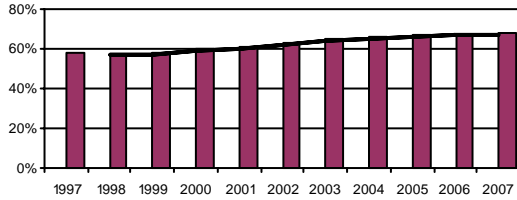
	Q1	Q2	Q3	Q4	Average
2006	26,229	26,684	26,952	26,204	26,519
2007	26,074				26,074

Jail Profile Survey

2007

Percentage Non-sentenced

10 Year Summary									
1997	1998	1999	2000	2001	2002	2003	2004	2005	2006
58%	57%	58%	60%	61%	63%	65%	66%	67%	67%



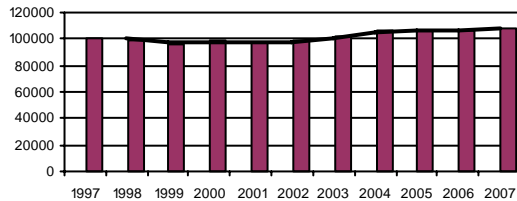
While the Percentage of Non-Sentenced inmates in the first quarter of 2007 remained at the fourth quarter 2006 level, it increased over the 2006 yearly average. This signals a potential upward trend for 2007.

Quarterly Results

	Q1	Q2	Q3	Q4	Average
2006	67%	67%	67%	68%	67%
2007	68%				68%

Average Number of Persons Booked Per Month

10 Year Summary									
1997	1998	1999	2000	2001	2002	2003	2004	2005	2006
101,210	99,229	96,684	98,486	97,089	98,603	102,217	106,862	107,120	106,868



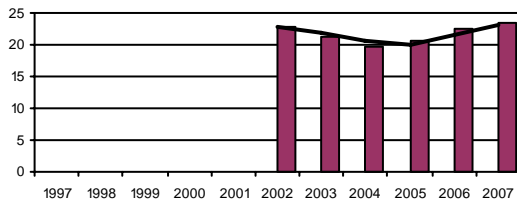
The Average Number of Persons Booked Per Month in the first quarter of 2007 increased over the fourth quarter of 2006 and was a 3.97% increase over the same quarter in 2006.

Quarterly Results

	Q1	Q2	Q3	Q4	Average
2006	104,194	106,838	110,473	105,909	106,868
2007	108,332				108,332

Average Length Of Stay

10 Year Summary									
1997	1998	1999	2000	2001	2002	2003	2004	2005	2006
					22.7	21.2	19.8	20.5	22.5



The Average Length of Stay in the first quarter of 2007 was an increase from the fourth quarter of 2006 of 3% and an increase of 4.5% over the first quarter in 2006.

Quarterly Results

	Q1	Q2	Q3	Q4	Average
2006	22.6	21.7	22.9	22.9	22.5
2007	23.6				23.6

Average Daily Population

Non-sentenced / Sentenced Male / Female

California County Jails - For Months Of January - March 2007

	Non-sentenced						Sentenced						Total
	Male		Female		Total		Male		Female		Total		
	#	%	#	%	#	%	#	%	#	%	#	%	
1 . Alameda Sheriff's Dept.	2,959	92%	255	8%	3,214	79%	659	76%	206	24%	865	21%	4,079
2 . Amador Sheriff's Dept.	39	79%	10	21%	49	58%	25	71%	10	29%	35	42%	83
3 . Butte Sheriff's Dept.	219	86%	37	14%	256	55%	169	81%	40	19%	209	45%	465
4 . Calaveras Sheriff's Dept.	43	84%	8	16%	51	69%	21	94%	1	6%	23	31%	74
5 . Colusa Sheriff's Dept.	28	92%	2	8%	30	53%	23	86%	4	14%	26	47%	56
6 . Contra Costa Sheriff's Dept.	893	87%	131	13%	1,024	64%	529	92%	46	8%	575	36%	1,599
7 . Del Norte Sheriff's Dept.	68	86%	11	14%	79	55%	52	81%	12	19%	64	45%	142
8 . El Dorado Sheriff's Dept.	175	88%	24	12%	199	55%	140	88%	20	12%	160	45%	359
9 . Fresno Sheriff's Dept.	2,153	89%	279	11%	2,433	75%	688	83%	144	17%	831	25%	3,264
10 . Glenn Sheriff's Dept.	66	84%	12	16%	79	64%	36	82%	8	18%	44	36%	122
11 . Humboldt Sheriff's Dept.	214	86%	34	14%	248	65%	111	85%	20	15%	131	35%	379
12 . Imperial Sheriff's Dept.	213	88%	29	12%	242	48%	238	91%	23	9%	260	52%	502
13 . Inyo Sheriff's Dept.	29	90%	3	10%	33	40%	38	78%	11	22%	48	60%	81
14 . Kern Sheriff's Dept.	1,603	88%	215	12%	1,817	79%	369	76%	119	24%	489	21%	2,306
15 . Kings Sheriff's Dept.	135	90%	15	10%	150	48%	132	81%	31	19%	162	52%	312
16 . Lake Sheriff's Dept.	140	86%	23	14%	163	60%	84	77%	26	23%	110	40%	272
17 . Lassen Sheriff's Dept.	49	83%	10	17%	59	60%	30	79%	8	21%	38	40%	97
18 . Los Angeles Sheriff's Dept.	11,556	89%	1,489	11%	13,045	72%	4,466	87%	684	13%	5,150	28%	18,195
19 . Madera Corrections Dept.	283	87%	43	13%	326	80%	80	95%	4	5%	84	20%	410
20 . Marin Sheriff's Dept.	224	89%	28	11%	252	79%	58	86%	10	14%	67	21%	319
21 . Mariposa Sheriff's Dept.	28	90%	3	10%	31	54%	23	85%	4	15%	27	46%	58
22 . Mendocino Sheriff's Dept.	148	88%	21	12%	168	65%	76	83%	15	17%	91	35%	260
23 . Merced Sheriff's Dept.	469	89%	56	11%	525	74%	158	87%	25	13%	183	26%	708
24 . Modoc Sheriff's Dept.	12	78%	3	22%	15	58%	7	64%	4	36%	11	42%	26
25 . Mono Sheriff's Dept.	18	93%	1	7%	19	54%	14	88%	2	12%	16	46%	36
26 . Monterey Sheriff's Dept.	784	88%	106	12%	890	76%	250	87%	38	13%	289	24%	1,178
27 . Napa Corrections Dept.	134	85%	23	15%	156	64%	76	86%	13	14%	89	36%	245
28 . Nevada Sheriff's Dept.	84	84%	16	16%	101	60%	56	84%	11	16%	67	40%	168
29 . Orange Sheriff's Dept.	3,055	89%	392	11%	3,448	53%	2,592	84%	478	16%	3,070	47%	6,518
30 . Placer Sheriff's Dept.	340	88%	48	12%	388	64%	182	83%	36	17%	218	36%	606
31 . Plumas Sheriff's Dept.	17	85%	3	15%	20	41%	24	82%	5	18%	29	59%	49
32 . Riverside Sheriff's Dept.	2,877	91%	298	9%	3,175	87%	412	85%	72	15%	484	13%	3,659
33 . Sacramento Sheriff's Dept.	2,378	88%	329	12%	2,707	61%	1,494	86%	251	14%	1,745	39%	4,453
34 . San Benito Sheriff's Dept.	62	89%	8	11%	70	58%	45	91%	4	9%	50	42%	119
35 . San Bernardino Sheriff's Dept.	3,670	87%	546	13%	4,217	76%	1,055	80%	257	20%	1,313	24%	5,529

Average Daily Population

Non-sentenced / Sentenced Male / Female

California County Jails - For Months Of January - March 2007

	<u>Jurisdiction</u>	Non-sentenced						Sentenced						Total #
		Male		Female		Total		Male		Female		Total		
		#	%	#	%	#	%	#	%	#	%	#	%	
36 .	San Diego Sheriff's Dept.	2,875	86%	476	14%	3,351	66%	1,429	82%	307	18%	1,735	34%	5,086
37 .	San Diego Work Furlough	0	0%	0	0%	0	0%	154	77%	47	23%	201	100%	201
38 .	San Francisco Sheriff's Dept.	1,313	88%	184	12%	1,497	78%	379	87%	55	13%	434	22%	1,932
39 .	San Joaquin Sheriff's Dept.	734	85%	126	15%	860	55%	589	85%	106	15%	695	45%	1,555
40 .	San Luis Obispo Sheriff's Dept	184	85%	31	15%	215	44%	228	84%	44	16%	272	56%	487
41 .	San Mateo Sheriff's Dept.	530	86%	84	14%	614	52%	489	85%	85	15%	574	48%	1,188
42 .	Santa Ana Police Dept.	405	89%	48	11%	453	94%	22	78%	6	22%	29	6%	482
43 .	Santa Barbara Sheriff's Dept.	551	86%	90	14%	641	67%	268	84%	51	16%	320	33%	960
44 .	Santa Clara Corrections Dept.	2,646	88%	364	12%	3,011	68%	1,207	86%	196	14%	1,403	32%	4,414
45 .	Santa Clara Probation Dept.	0	0%	0	0%	0	0%	109	72%	42	28%	152	100%	152
46 .	Santa Cruz Sheriff's Dept.	221	87%	34	13%	255	49%	223	83%	45	17%	269	51%	524
47 .	Shasta Sheriff's Dept.	227	85%	41	15%	268	74%	77	82%	17	18%	95	26%	363
48 .	Sierra Sheriff's Dept.	3	60%	2	40%	5	69%	2	72%	1	28%	2	31%	7
49 .	Siskiyou Sheriff's Dept.	66	94%	4	6%	71	85%	10	83%	2	17%	12	15%	82
50 .	Solano Sheriff's Dept.	720	85%	128	15%	849	78%	192	81%	45	19%	236	22%	1,085
51 .	Sonoma Sheriff's Dept.	563	88%	80	12%	643	60%	367	85%	65	15%	432	40%	1,075
52 .	Stanislaus Sheriff's Dept.	742	87%	111	13%	852	62%	413	80%	100	20%	513	38%	1,365
53 .	Sutter Sheriff's Dept.	145	86%	25	14%	169	66%	62	72%	24	28%	86	34%	256
54 .	Tehama Sheriff's Dept.	104	87%	15	13%	120	59%	66	80%	16	20%	82	41%	202
55 .	Trinity Sheriff's Dept.	16	76%	5	24%	21	52%	18	91%	2	9%	19	48%	40
56 .	Tulare Sheriff's Dept.	666	84%	126	16%	792	54%	594	89%	70	11%	665	46%	1,457
57 .	Tuolumne Sheriff's Dept.	65	76%	20	24%	86	60%	44	78%	13	22%	57	40%	143
58 .	Ventura Sheriff's Dept.	1,075	86%	173	14%	1,248	72%	403	83%	82	17%	485	28%	1,733
59 .	Ventura Work Furlough	0	0%	0	0%	0	0%	88	81%	21	19%	110	100%	110
60 .	Yolo Sheriff's Dept.	298	87%	44	13%	342	83%	59	85%	10	15%	70	17%	412
61 .	Yuba Sheriff's Dept.	281	84%	54	16%	336	82%	59	77%	17	23%	76	18%	412
Statewide		49,596	88%	6,781	12%	56,377	68%	21,962	84%	4,112	16%	26,074	32%	82,451

Jail Populations: Quarter 1, 2006 Versus Quarter 1, 2007

Jurisdiction	Qtr 1, 2006	Qtr 1, 2007	Qtr 1, 2007 Minus Qtr 1, 2006	Qtr 1, 2006 To Qtr 1, 2007 % +/-	% of Total Increase or Decrease	Cum %	Cum Total
Sacramento Sheriff's Dept.	3,604	4,453	849	23.6%	28.2%	28.16%	849
Riverside Sheriff's Dept.	3,300	3,659	359	10.9%	11.9%	40.07%	1,208
Los Angeles Sheriff's Dept.	17,890	18,195	305	1.7%	10.1%	50.18%	1,513
Orange Sheriff's Dept.	6,234	6,518	284	4.6%	9.4%	59.60%	1,797
Fresno Sheriff's Dept.	3,106	3,264	158	5.1%	5.2%	64.84%	1,955
San Joaquin Sheriff's Dept.	1,426	1,555	129	9.0%	4.3%	69.12%	2,084
San Francisco Sheriff's Dept.	1,823	1,932	109	6.0%	3.6%	72.74%	2,193
Ventura Sheriff's Dept.	1,626	1,733	107	6.6%	3.5%	76.29%	2,300
Santa Ana Police Dept.	380	482	102	26.8%	3.4%	79.67%	2,402
Tulare Sheriff's Dept.	1,359	1,456	97	7.1%	3.2%	82.89%	2,499
San Mateo Sheriff's Dept.	1,099	1,187	88	8.0%	2.9%	85.80%	2,587
Kern Sheriff's Dept.	2,231	2,305	74	3.3%	2.5%	88.26%	2,661
Alameda Sheriff's Dept.	4,007	4,079	72	1.8%	2.4%	90.65%	2,733
San Bernardino Sheriff's Dept.	5,479	5,529	50	0.9%	1.7%	92.31%	2,783
Solano Sheriff's Dept.	1,049	1,085	36	3.4%	1.2%	93.50%	2,819
Madera Corrections Dept.	381	410	29	7.6%	1.0%	94.46%	2,848
Monterey Sheriff's Dept.	1,151	1,178	27	2.3%	0.9%	95.36%	2,875
Placer Sheriff's Dept.	580	606	26	4.5%	0.9%	96.22%	2,901
Tehama Sheriff's Dept.	176	202	26	14.8%	0.9%	97.08%	2,927
Stanislaus Sheriff's Dept.	1,339	1,365	26	1.9%	0.9%	97.94%	2,953
Colusa Sheriff's Dept.	41	56	15	36.6%	0.5%	98.44%	2,968
Del Norte Sheriff's Dept.	128	142	14	10.9%	0.5%	98.91%	2,982
Lassen Sheriff's Dept.	89	97	8	9.0%	0.3%	99.17%	2,990
Humboldt Sheriff's Dept.	372	379	7	1.9%	0.2%	99.40%	2,997
Kings Sheriff's Dept.	306	312	6	2.0%	0.2%	99.60%	3,003
Yolo Sheriff's Dept.	408	411	3	0.7%	0.1%	99.70%	3,006
El Dorado Sheriff's Dept.	357	359	2	0.6%	0.1%	99.77%	3,008
Yuba Sheriff's Dept.	409	411	2	0.5%	0.1%	99.83%	3,010
Modoc Sheriff's Dept.	25	27	2	8.0%	0.1%	99.90%	3,012
Tuolumne Sheriff's Dept.	141	143	2	1.4%	0.1%	99.97%	3,014
Mono Sheriff's Dept.	35	36	1	2.9%	0.0%	100.00%	3,015
Mariposa Sheriff's Dept.	60	58	-2	-3.3%	0.3%	0.27%	-2
Marin Sheriff's Dept.	321	319	-2	-0.6%	0.3%	0.55%	-4
Trinity Sheriff's Dept.	43	40	-3	-7.0%	0.4%	0.96%	-7
Amador Sheriff's Dept.	86	83	-3	-3.5%	0.4%	1.37%	-10
Calaveras Sheriff's Dept.	77	73	-4	-5.2%	0.5%	1.91%	-14
Imperial Sheriff's Dept.	507	503	-4	-0.8%	0.5%	2.46%	-18
San Benito Sheriff's Dept.	123	119	-4	-3.3%	0.5%	3.01%	-22
Sierra Sheriff's Dept.	11	7	-4	-36.4%	0.5%	3.55%	-26
Ventura Work Furlough	116	110	-6	-5.2%	0.8%	4.37%	-32
Contra Costa Sheriff's Dept.	1,606	1,600	-6	-0.4%	0.8%	5.19%	-38
Sutter Sheriff's Dept.	262	255	-7	-2.7%	1.0%	6.15%	-45
Santa Barbara Sheriff's Dept.	967	960	-7	-0.7%	1.0%	7.10%	-52
Shasta Sheriff's Dept.	371	363	-8	-2.2%	1.1%	8.20%	-60
Inyo Sheriff's Dept.	89	80	-9	-10.1%	1.2%	9.43%	-69
Lake Sheriff's Dept.	281	271	-10	-3.6%	1.4%	10.79%	-79
Plumas Sheriff's Dept.	61	50	-11	-18.0%	1.5%	12.30%	-90
Nevada Sheriff's Dept.	181	167	-14	-7.7%	1.9%	14.21%	-104
Glenn Sheriff's Dept.	138	122	-16	-11.6%	2.2%	16.39%	-120
Siskiyou Sheriff's Dept.	100	82	-18	-18.0%	2.5%	18.85%	-138
Napa Corrections Dept.	265	245	-20	-7.5%	2.7%	21.58%	-158
Santa Clara Probation Dept.	183	151	-32	-17.5%	4.4%	25.96%	-190
San Luis Obispo Sheriff's Dept.	519	487	-32	-6.2%	4.4%	30.33%	-222
Mendocino Sheriff's Dept.	298	260	-38	-12.8%	5.2%	35.52%	-260
Santa Cruz Sheriff's Dept.	574	524	-50	-8.7%	6.8%	42.35%	-310
San Diego Sheriff's Dept.	5,137	5,086	-51	-1.0%	7.0%	49.32%	-361
Merced Sheriff's Dept.	764	708	-56	-7.3%	7.7%	56.97%	-417
Sonoma Sheriff's Dept.	1,140	1,075	-65	-5.7%	8.9%	65.85%	-482
Butte Sheriff's Dept.	534	465	-69	-12.9%	9.4%	75.27%	-551
Santa Clara Corrections Dept.	4,500	4,414	-86	-1.9%	11.7%	87.02%	-637
San Diego Work Furlough	296	201	-95	-32.1%	13.0%	100.00%	-732
	80,161	82,444	2,283	Note: Totals subject to slight variation due to rounding			
		Total Increase:	3,015				
		Total Decrease:	-732				

Interpretation of Table:
JAIL POPULATIONS: 1st Qtr Calendar Year '06 versus 1st Qtr Calendar Year '07

This table:

- summarizes the ADP results for the 61 jurisdictions in California reporting data from Type II, III, and IV jails;
- summarizes jurisdiction ADP results for the most recent quarter (Column C);
- compares jurisdiction ADP for the most recent quarter with the same quarter last year (Column B);
- ranks the jurisdictions in terms of gains or losses in ADP from high to low (Column D);
- lists the percentage growth or decline in ADP for each jurisdiction (Column E);
- lists the percentage of the overall State increase or decrease in ADP that is represented by each jurisdiction (Column F);
- lists, by jurisdiction, the cumulative percentage increase and decrease in the State ADP starting with the jurisdiction with the highest percentage of the increase and proceeding to the jurisdiction with the highest percentage of the decrease (Column G);
- lists, by jurisdiction, the cumulative total increase and decrease in the State ADP starting with the jurisdiction with the highest increase and proceeding to the jurisdiction with the biggest decrease (Column H); and,
- lists the jurisdictions that experienced decreases in their ADP as shaded.

Some important conclusions from this table are:

1. The two numbers at the bottom indicate the "total increase" in ADP (in this case 3,015) and "total decrease" in ADP (-732). In other words, the jurisdictions experiencing increases had a total increase of 3,015 ADP; and the jurisdictions experiencing decreases had a total decrease of 732 ADP. Subtracting 732 from 3,015 produces the overall increase of 2,283 between the first quarter of calendar year 2006 and the first quarter of calendar year 2007.
2. The Sacramento County ADP increase of 849 is 28.2% of the total increase of 3,015. Thirty-one jurisdictions had increases (down to Mono County Sheriff's Department) with no jurisdictions reporting no increase. When you get to Mono County Sheriff's Department, you have accounted for 100% of the increases (100% of the cumulative total of 3,015).
3. Jurisdictions that experienced a decrease in ADP are listed from smallest decrease to largest decrease (Mariposa County Sheriff's Department to San Diego County Work Furlough). When you get to the bottom of the table, you have accounted for 100% of the total decreases of 732 inmates.
4. The cumulative percentage of ADP increase for the top four jurisdictions (Sacramento County Sheriff's Department to Orange County Sheriff's Department) is 59.6%. In other words, four jurisdictions accounted for almost 60% of the total ADP increase. Four jurisdictions (Sonoma County Sheriff's Department, Butte County Sheriff's Department Santa Clara Department of Correction, and San Diego County Work Furlough) account for 43% of the decreases.