

JAIL PROFILE SURVEY

2010, 2nd QUARTER SURVEY RESULTS

FACILITIES STANDARDS AND OPERATIONS DIVISION

CORRECTIONS STANDARDS AUTHORITY

STATE OF CALIFORNIA
600 Bercut Drive
Sacramento, CA 95811
(916) 445-5073
www.csa.ca.gov

JAIL PROFILE SURVEY

EXPLANATION OF RESULTS

The following link titles contain the Jail Profile Survey results for the second quarter of the calendar year 2010. Quarterly Totals contains the second quarter totals based upon the monthly and quarterly data submitted to us by the participating jurisdictions. The next six (6) link titles show the trend data for variables we have been tracking for the last ten years (Average Number of Persons Booked, Average Length of Stay, Average Daily Population, Percentage Non-Sentenced, Non-Sentenced ADP, and Sentenced ADP). The remainder of this page provides explanations and clarifications of the data presented.

Quarterly Totals link

- Unless otherwise noted, “projected totals” are based upon the average per day for the variable in question. For example, there was an average of 73,701 per day in local jails (excluding Type I’s) during the three-month span of April thru June 2010.
- For some variables (other than ADP), we did not receive complete data from all jurisdictions. In such instances, we used statistical procedures to estimate the statewide total.
- The number for “Bookings” is the average of the monthly totals for April, May, and June 2010.
- For the following variables, the numbers presented are the totals as of the mid-quarter (i.e., May 15, 2010); Pretrial Release, Early Release, 2 and 3 Strikes, Felony Warrants, Misdemeanor Warrants, Juveniles in Custody and Undocumented Aliens.
- “Assaults” is the total number of serious inmate assaults on staff (resulting in a crime report), statewide, during the second quarter of calendar year 2010.

Average Number of Persons Booked, Average Length of Stay, Average Daily Population, Percentage Non-Sentenced, Non-Sentenced ADP, and Sentenced ADP links

- The data in the 10-Year Summary tables are based upon survey data which the Corrections Standards Authority has gathered since the early 1980’s.
- Prior to 1995, yearly averages were reported to the CSA on an annual basis. Yearly averages from 1996 to the present time have been the average of the 12 calendar months. In 1995, the yearly figure reported is the fourth quarter average, since we do not have data from the first three quarters.

CORRECTIONS STANDARDS AUTHORITY JAIL PROFILE SURVEY

Reporting Period: April to June, 2010

County Jail Populations

ADP ^a	73,701 ^b
Holding Areas	1,333
Average "Under the Roof" ^c	75,034 ^d
Highest One Day Count	78,139 ^e

Special Use Beds

Medical Beds	856
Mental Health Beds	3,502

County Jail Populations

Felony	58,761
Misdemeanor	14,940
Total	73,701
Non-Sentenced Males	46,538
Non-Sentenced Females	6,081
Sentenced Males	17,849
Sentenced Females	3,233
Total	73,701
Maximum Security Inmates	22,782
Medium Security Inmates	33,405
Minimum Security Inmates	17,514
Total	73,701

Released Per Month Due to Lack of Space

Pretrial Release	7,827 ^f
Early Release	5,203 ^f
Total	13,030

Inmates with 2 and 3 Strikes

2 Strike Inmates	1,468 ^g
3 Strike Inmates	718 ^g
Total	2,186

Unservd Warrants

Felony Warrants	238,187 ^g
Misdemeanor Warrants	1,521,334 ^g
Total	1,759,521

Inmates From Other Jurisdictions

Housed on Federal Contract	4,904
Housed on Contract with CDC	1,927
From Other Counties on Contract	45
Awaiting Transport	3,002
Total	9,878

Other Jail Profile Survey Variables

Bookings Per Month	99,105 ^f
Juveniles in Custody	0 ^f
Criminal / Illegal Aliens	12,031
Assaults On Staff	285

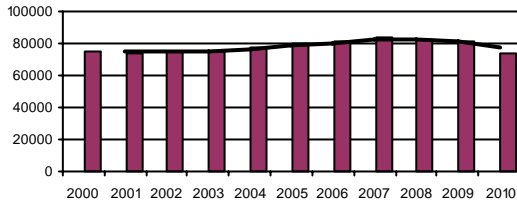
- a. The Average Daily Population for all jurisdictions (excluding Type I's) does not include inmates in holding areas.
- b. Unless otherwise indicated, the numbers reported are the average across the days in the quarter.
- c. "Under the Roof" is the sum of the Average Daily Population plus the average daily number of inmates in Holding Areas.
- d. Totals may not be the exact sum of the subtotals due to rounding.
- e. The sum of all Highest One Day inmate population counts from all jurisdictions.
- f. These data are collected on a monthly basis, this figure is an average of the total numbers collected each month during this quarter.
- g. These data are one-day snapshots collected at the end of the quarter.

Jail Profile Survey

2010

Average Daily Population

10 Year Summary									
2000	2001	2002	2003	2004	2005	2006	2007	2008	2009
75,044	73,824	75,096	75,243	76,887	79,705	81,104	83,184	82,397	80,866



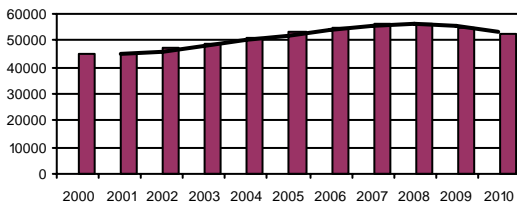
The Average Daily Population (ADP) for the second quarter of 2010 reflects a slight decrease from the first quarter of 2010. The ADP for the second quarter of 2010 is 10.55% lower than the second quarter of 2009 reflecting a continuation of the downtrend in ADP that peaked in 2007.

Quarterly Results

	Q1	Q2	Q3	Q4	Average
2009	81,138	82,393	81,539	78,416	80,866
2010	73,993	73,701			73,846

Non-sentenced ADP

10 Year Summary									
2000	2001	2002	2003	2004	2005	2006	2007	2008	2009
44,940	45,187	47,053	49,121	50,715	53,357	54,585	56,571	56,232	54,589



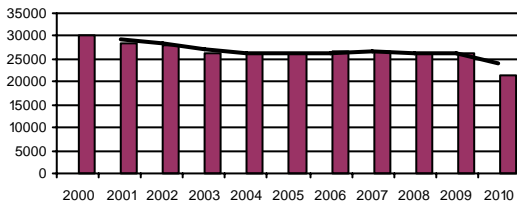
The Non-Sentenced Population ADP was 52,619 for the second quarter of 2010. This number reflects an increase of 1.32% over the first quarter of 2010 but reflects a decrease of over 3.76% from the second quarter of 2009.

Quarterly Results

	Q1	Q2	Q3	Q4	Average
2009	55,344	54,671	54,656	53,700	54,589
2010	51,932	52,619			52,278

Sentenced ADP

10 Year Summary									
2000	2001	2002	2003	2004	2005	2006	2007	2008	2009
30,109	28,637	28,043	26,121	26,171	26,347	26,519	26,613	26,165	26,277



The Sentenced ADP was 21,082 for the second quarter of 2010 reflecting a decrease of 4.44% from the first quarter of 2010 and a significant decrease of approximately 23.95% from the second quarter of 2009. This may be attributed to Senate Bill 18, amending Penal Code Section 4019, which increased good and work time credits for certain non-violent offenders.

Quarterly Results

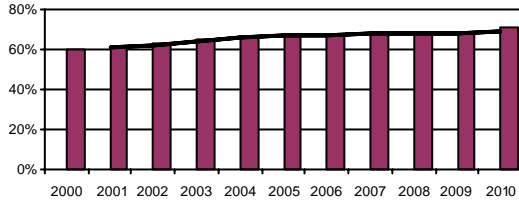
	Q1	Q2	Q3	Q4	Average
2009	25,794	27,721	26,882	24,715	26,277
2010	22,061	21,082			21,569

Jail Profile Survey

2010

Percentage Non-sentenced

10 Year Summary									
2000	2001	2002	2003	2004	2005	2006	2007	2008	2009
60%	61%	63%	65%	66%	67%	67%	68%	68%	68%



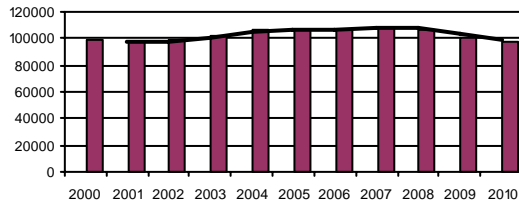
The Percentage of Non-Sentenced inmates increased by one percentage point the second quarter of 2010 and reflects a 5% increase over the second quarter of 2009.

Quarterly Results

	Q1	Q2	Q3	Q4	Average
2009	68%	66%	67%	68%	68%
2010	70%	71%			71%

Average Number of Persons Booked Per Month

10 Year Summary									
2000	2001	2002	2003	2004	2005	2006	2007	2008	2009
98,486	97,089	98,603	102,217	106,862	107,120	106,868	108,238	107,086	101,223



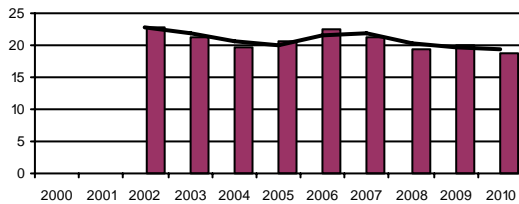
The Average Number of Persons Booked Per Month in the second quarter of 2010 reflects a 3.35% increase over the first quarter of 2010, but results in a 5.31% decrease in bookings from the second quarter of 2009. The quarterly increase in bookings may be attributed to less restrictive criteria for booking with some agencies due to the availability of bed space.

Quarterly Results

	Q1	Q2	Q3	Q4	Average
2009	102,516	104,662	103,994	93,787	101,223
2010	95,896	99,105			97,509

Average Length Of Stay

10 Year Summary									
2000	2001	2002	2003	2004	2005	2006	2007	2008	2009
		22.7	21.2	19.8	20.5	22.5	21.4	19.4	20.0



The Average Length of Stay of 17.1 days in the second quarter of 2010 decreased 16.18% from the first quarter of 2010 and reflects a 17.79% decrease from the second quarter of 2009. This may be attributed to Senate Bill 18, amending Penal Code Section 4019, which increased good and work time credits for certain non-violent offenders.

Quarterly Results

	Q1	Q2	Q3	Q4	Average
2009	19.2	20.8	19.6	20.2	20.0
2010	20.4	17.1			18.7

Average Daily Population

Non-sentenced / Sentenced Male / Female

California County Jails - For Months Of April - June 2010

	Non-sentenced						Sentenced						Total
	Male		Female		Total		Male		Female		Total		
	#	%	#	%	#	%	#	%	#	%	#	%	
Jurisdiction													
1. Alameda Sheriff's Dept.	3,362	93%	256	7%	3,617	84%	608	87%	88	13%	696	16%	4,313
2. Amador Sheriff's Dept.	39	82%	8	18%	47	56%	30	82%	7	18%	36	44%	83
3. Butte Sheriff's Dept.	359	88%	51	12%	410	75%	116	83%	23	17%	139	25%	549
4. Calaveras Sheriff's Dept.	39	85%	7	15%	46	62%	25	88%	3	12%	28	38%	74
5. Colusa Sheriff's Dept.	26	87%	4	13%	30	70%	10	76%	3	24%	13	30%	42
6. Contra Costa Sheriff's Dept.	1,045	87%	158	13%	1,203	79%	277	87%	42	13%	319	21%	1,522
7. Del Norte Sheriff's Dept.	76	91%	7	9%	83	71%	28	82%	6	18%	34	29%	117
8. El Dorado Sheriff's Dept.	153	86%	24	14%	178	52%	137	84%	27	16%	163	48%	341
9. Fresno Sheriff's Dept.	1,424	90%	159	10%	1,583	86%	228	88%	30	12%	258	14%	1,840
10. Glenn Sheriff's Dept.	58	87%	9	13%	67	76%	18	84%	3	16%	21	24%	88
11. Humboldt Sheriff's Dept.	227	88%	31	12%	259	71%	89	86%	15	14%	104	29%	362
12. Imperial Sheriff's Dept.	378	93%	29	7%	407	71%	149	90%	17	10%	166	29%	573
13. Inyo Sheriff's Dept.	26	90%	3	10%	29	42%	34	84%	6	16%	40	58%	69
14. Kern Sheriff's Dept.	1,705	90%	188	10%	1,893	83%	315	80%	80	20%	395	17%	2,288
15. Kings Sheriff's Dept.	189	88%	25	12%	214	60%	106	76%	33	24%	140	40%	354
16. Lake Sheriff's Dept.	134	88%	18	12%	152	68%	53	74%	18	26%	71	32%	223
17. Lassen Sheriff's Dept.	25	84%	5	16%	30	50%	25	80%	6	20%	31	50%	61
18. Los Angeles Sheriff's Dept.	10,111	89%	1,278	11%	11,389	68%	4,766	88%	666	12%	5,432	32%	16,821
19. Madera Corrections Dept.	225	86%	38	14%	263	71%	87	82%	19	18%	106	29%	369
20. Marin Sheriff's Dept.	204	90%	23	10%	227	81%	41	79%	11	21%	52	19%	279
21. Mariposa Sheriff's Dept.	18	82%	4	18%	22	49%	20	88%	3	12%	23	51%	45
22. Mendocino Sheriff's Dept.	140	86%	24	14%	164	60%	88	81%	21	19%	109	40%	273
23. Merced Sheriff's Dept.	482	92%	42	8%	524	73%	170	88%	23	12%	193	27%	717
24. Modoc Sheriff's Dept.	9	88%	1	12%	11	71%	4	92%	0	8%	4	29%	15
25. Mono Sheriff's Dept.	14	84%	3	16%	16	56%	12	95%	1	5%	13	44%	29
26. Monterey Sheriff's Dept.	623	87%	94	13%	717	72%	247	89%	30	11%	277	28%	994
27. Napa Corrections Dept.	145	88%	20	12%	165	67%	66	82%	14	18%	80	33%	245
28. Nevada Sheriff's Dept.	60	83%	12	17%	72	44%	75	81%	18	19%	93	56%	165
29. Orange Sheriff's Dept.	2,572	89%	322	11%	2,893	61%	1,549	85%	279	15%	1,828	39%	4,722
30. Placer Sheriff's Dept.	308	88%	44	12%	352	64%	164	84%	32	16%	196	36%	547
31. Plumas Sheriff's Dept.	19	81%	4	19%	23	52%	18	85%	3	15%	22	48%	45
32. Riverside Sheriff's Dept.	2,477	90%	275	10%	2,752	80%	598	86%	96	14%	694	20%	3,446
33. Sacramento Sheriff's Dept.	2,171	91%	224	9%	2,395	61%	1,354	87%	208	13%	1,563	39%	3,958
34. San Benito Sheriff's Dept.	75	86%	13	14%	87	70%	32	85%	6	15%	37	30%	125
35. San Bernardino Sheriff's Dept.	3,854	83%	768	17%	4,622	83%	719	78%	198	22%	917	17%	5,539

Average Daily Population

Non-sentenced / Sentenced Male / Female

California County Jails - For Months Of April - June 2010

	Non-sentenced						Sentenced						Total
	Male		Female		Total		Male		Female		Total		
	#	%	#	%	#	%	#	%	#	%	#	%	
36. San Diego Sheriff's Dept.	2,747	87%	413	13%	3,160	67%	1,264	82%	275	18%	1,538	33%	4,698
37. San Diego Work Furlough	6	100%	0	0%	6	3%	134	74%	47	26%	181	97%	187
38. San Francisco Sheriff's Dept.	1,192	89%	154	11%	1,346	82%	246	84%	46	16%	292	18%	1,638
39. San Joaquin Sheriff's Dept.	709	88%	97	12%	807	62%	406	83%	83	17%	489	38%	1,296
40. San Luis Obispo Sheriff's Dept.	201	89%	26	11%	227	50%	192	84%	37	16%	229	50%	455
41. San Mateo Sheriff's Dept.	676	89%	81	11%	758	70%	274	86%	44	14%	319	30%	1,077
42. Santa Ana Police Dept.	412	87%	61	13%	473	99%	5	100%	0	0%	5	1%	478
43. Santa Barbara Sheriff's Dept.	628	87%	90	13%	718	77%	174	82%	38	18%	212	23%	930
44. Santa Clara Corrections Dept.	2,476	88%	342	12%	2,818	73%	854	83%	170	17%	1,025	27%	3,842
45. Santa Cruz Sheriff's Dept.	203	89%	26	11%	229	54%	162	82%	36	18%	197	46%	426
46. Shasta Sheriff's Dept.	156	87%	23	13%	179	80%	40	90%	5	10%	45	20%	224
47. Sierra Sheriff's Dept.	5	80%	1	20%	7	83%	1	75%	0	25%	1	17%	8
48. Siskiyou Sheriff's Dept.	62	93%	5	7%	67	79%	16	87%	2	13%	18	21%	85
49. Solano Sheriff's Dept.	614	88%	86	12%	700	82%	126	83%	26	17%	152	18%	852
50. Sonoma Sheriff's Dept.	466	88%	64	12%	530	57%	338	84%	65	16%	403	43%	934
51. Stanislaus Sheriff's Dept.	759	89%	90	11%	849	74%	236	80%	59	20%	295	26%	1,144
52. Sutter Sheriff's Dept.	140	84%	27	16%	167	77%	33	67%	16	33%	49	23%	215
53. Tehama Sheriff's Dept.	98	86%	16	14%	114	64%	53	81%	12	19%	65	36%	179
54. Trinity Sheriff's Dept.	11	79%	3	21%	14	41%	16	80%	4	20%	20	59%	34
55. Tulare Sheriff's Dept.	646	88%	87	12%	733	56%	480	83%	101	17%	582	44%	1,315
56. Tuolumne Sheriff's Dept.	47	78%	13	22%	60	54%	37	74%	13	26%	51	46%	111
57. Ventura Sheriff's Dept.	871	88%	118	12%	989	69%	361	82%	80	18%	440	31%	1,429
58. Ventura Work Furlough	0	0%	0	0%	0	0%	63	79%	17	21%	80	100%	80
59. Yolo Sheriff's Dept.	299	88%	42	12%	341	85%	50	81%	12	19%	62	15%	403
60. Yuba Sheriff's Dept.	341	88%	46	12%	387	91%	33	83%	7	17%	40	9%	427
Statewide	46,539	88%	6,081	12%	52,619	71%	17,849	85%	3,233	15%	21,082	29%	73,701

Jail Populations: Quarter 2, 2009 Versus Quarter 2, 2010

Jurisdiction	Qtr 2, 2009	Qtr 2, 2010	Qtr 2, 2010 Minus Qtr 2, 2009	Qtr 2, 2009 To Qtr 2, 2010 % +/-	% of Total Increase or Decrease	Cum %	Cum Total
Butte Sheriff's Dept.	512	549	37	7.2%	34.6%	34.58%	37
Yuba Sheriff's Dept.	399	427	28	7.0%	26.2%	60.75%	65
Yolo Sheriff's Dept.	386	403	17	4.4%	15.9%	76.64%	82
Kern Sheriff's Dept.	2,278	2,287	9	0.4%	8.4%	85.05%	91
San Benito Sheriff's Dept.	120	125	5	4.2%	4.7%	89.72%	96
Amador Sheriff's Dept.	81	84	3	3.7%	2.8%	92.52%	99
Napa Corrections Dept.	242	245	3	1.2%	2.8%	95.33%	102
Santa Ana Police Dept.	476	478	2	0.4%	1.9%	97.20%	104
Sierra Sheriff's Dept.	6	8	2	33.3%	1.9%	99.07%	106
Colusa Sheriff's Dept.	41	42	1	2.4%	0.9%	100.00%	107
Siskiyou Sheriff's Dept.	87	86	-1	-1.1%	0.0%	0.01%	-1
Humboldt Sheriff's Dept.	363	362	-1	-0.3%	0.0%	0.02%	-2
Lake Sheriff's Dept.	227	223	-4	-1.8%	0.0%	0.07%	-6
Glenn Sheriff's Dept.	93	89	-4	-4.3%	0.0%	0.11%	-10
Plumas Sheriff's Dept.	50	45	-5	-10.0%	0.1%	0.17%	-15
Trinity Sheriff's Dept.	39	34	-5	-12.8%	0.1%	0.23%	-20
Kings Sheriff's Dept.	358	353	-5	-1.4%	0.1%	0.28%	-25
Modoc Sheriff's Dept.	21	15	-6	-28.6%	0.1%	0.35%	-31
Calaveras Sheriff's Dept.	79	73	-6	-7.6%	0.1%	0.42%	-37
Placer Sheriff's Dept.	554	547	-7	-1.3%	0.1%	0.50%	-44
Nevada Sheriff's Dept.	173	164	-9	-5.2%	0.1%	0.60%	-53
Mono Sheriff's Dept.	38	29	-9	-23.7%	0.1%	0.70%	-62
Mariposa Sheriff's Dept.	55	45	-10	-18.2%	0.1%	0.82%	-72
Tuolumne Sheriff's Dept.	122	111	-11	-9.0%	0.1%	0.94%	-83
Merced Sheriff's Dept.	730	716	-14	-1.9%	0.2%	1.10%	-97
El Dorado Sheriff's Dept.	358	341	-17	-4.7%	0.2%	1.30%	-114
Inyo Sheriff's Dept.	85	68	-17	-20.0%	0.2%	1.49%	-131
Del Norte Sheriff's Dept.	136	118	-18	-13.2%	0.2%	1.69%	-149
Tehama Sheriff's Dept.	198	179	-19	-9.6%	0.2%	1.91%	-168
Lassen Sheriff's Dept.	88	61	-27	-30.7%	0.3%	2.22%	-195
Monterey Sheriff's Dept.	1,021	994	-27	-2.6%	0.3%	2.52%	-222
Ventura Work Furlough	110	80	-30	-27.3%	0.3%	2.86%	-252
Mendocino Sheriff's Dept.	303	273	-30	-9.9%	0.3%	3.21%	-282
Santa Barbara Sheriff's Dept.	965	931	-34	-3.5%	0.4%	3.59%	-316
Marin Sheriff's Dept.	317	279	-38	-12.0%	0.4%	4.02%	-354
Sutter Sheriff's Dept.	255	216	-39	-15.3%	0.4%	4.47%	-393
San Luis Obispo Sheriff's Dept.	497	456	-41	-8.2%	0.5%	4.93%	-434
Santa Cruz Sheriff's Dept.	468	426	-42	-9.0%	0.5%	5.41%	-476
San Diego Work Furlough	236	188	-48	-20.3%	0.5%	5.96%	-524
San Mateo Sheriff's Dept.	1,130	1,076	-54	-4.8%	0.6%	6.57%	-578
Contra Costa Sheriff's Dept.	1,577	1,522	-55	-3.5%	0.6%	7.20%	-633
Imperial Sheriff's Dept.	630	572	-58	-9.2%	0.7%	7.86%	-691
Madera Corrections Dept.	448	369	-79	-17.6%	0.9%	8.75%	-770
Solano Sheriff's Dept.	942	853	-89	-9.4%	1.0%	9.77%	-859
Sonoma Sheriff's Dept.	1,031	933	-98	-9.5%	1.1%	10.88%	-957
Shasta Sheriff's Dept.	334	224	-110	-32.9%	1.3%	12.13%	-1,067
Alameda Sheriff's Dept.	4,433	4,313	-120	-2.7%	1.4%	13.49%	-1,187
Riverside Sheriff's Dept.	3,581	3,446	-135	-3.8%	1.5%	15.03%	-1,322
Stanislaus Sheriff's Dept.	1,321	1,143	-178	-13.5%	2.0%	17.05%	-1,500
Ventura Sheriff's Dept.	1,634	1,429	-205	-12.5%	2.3%	19.38%	-1,705
San Francisco Sheriff's Dept.	1,865	1,638	-227	-12.2%	2.6%	21.96%	-1,932
Tulare Sheriff's Dept.	1,550	1,315	-235	-15.2%	2.7%	24.64%	-2,167
San Joaquin Sheriff's Dept.	1,561	1,296	-265	-17.0%	3.0%	27.65%	-2,432
San Bernardino Sheriff's Dept.	5,813	5,538	-275	-4.7%	3.1%	30.78%	-2,707
San Diego Sheriff's Dept.	5,154	4,698	-456	-8.8%	5.2%	35.96%	-3,163
Santa Clara Corrections Dept.	4,319	3,842	-477	-11.0%	5.4%	41.38%	-3,640
Sacramento Sheriff's Dept.	4,489	3,958	-531	-11.8%	6.0%	47.42%	-4,171
Fresno Sheriff's Dept.	2,863	1,841	-1,022	-35.7%	11.6%	59.04%	-5,193
Orange Sheriff's Dept.	5,790	4,722	-1,068	-18.4%	12.1%	71.18%	-6,261
Los Angeles Sheriff's Dept.	19,356	16,821	-2,535	-13.1%	28.8%	100.00%	-8,796
	82,388	73,699	-8,689	Note: Totals subject to slight variation due to rounding			
		Total Increase:	107				
		Total Decrease:	-8,796				

Interpretation of Table:
JAIL POPULATIONS: 2nd Qtr Calendar Year '09 versus 2nd Qtr Calendar Year '10

This table:

- summarizes the ADP results for the 60 jurisdictions in California reporting data from Type II, III, and IV jails;
- summarizes jurisdiction ADP results for the most recent quarter (Column C);
- compares jurisdiction ADP for the most recent quarter with the same quarter last year (Column B);
- ranks the jurisdictions in terms of gains or losses in ADP from high to low (Column D);
- lists the percentage growth or decline in ADP for each jurisdiction (Column E);
- lists the percentage of the overall State increase or decrease in ADP that is represented by each jurisdiction (Column F);
- lists, by jurisdiction, the cumulative percentage increase and decrease in the State ADP starting with the jurisdiction with the highest percentage of the increase and proceeding to the jurisdiction with the highest percentage of the decrease (Column G);
- lists, by jurisdiction, the cumulative total increase and decrease in the State ADP starting with the jurisdiction with the highest increase and proceeding to the jurisdiction with the biggest decrease (Column H); and,
- lists the jurisdictions that experienced decreases in their ADP as shaded.

Some important conclusions from this table are:

1. The two numbers at the bottom indicate the "total increase" in ADP (in this case 107) and "total decrease" in ADP (-8,796). In other words, the jurisdictions experiencing increases had a total increase of 107 ADP; and the jurisdictions experiencing decreases had a total decrease of 8,796 ADP. Subtracting 8,796 from 107 produces the overall decrease of 8,689 between the second quarter of calendar year 2009 and the second quarter of calendar year 2010.
2. The Butte County Sheriff's Department ADP increase of 37 is 34.58% of the total increase of 107. Ten jurisdictions had increases (down to Colusa County Sheriff's Department) with no jurisdictions reporting no change. When you get to Colusa County Sheriff's Department, you have accounted for 100% of the increases (100% of the cumulative total of 107).
3. Jurisdictions that experienced a decrease in ADP are listed from smallest decrease to largest decrease (Siskiyou County Sheriff's Department and Humboldt County Sheriff's Department to Los Angeles County Sheriff's Department). When you get to the bottom of the table, you have accounted for 100% of the total decreases of 8,796 inmates.
4. The cumulative percentage of ADP increase for the top four jurisdictions (Butte County Sheriff's Department to Kern County Sheriff's Department) is 85.05%. In other words, four jurisdictions accounted for over 85% of the total ADP increase. Four jurisdictions (Sacramento County Sheriff's Department, Fresno County Sheriff's Department, Orange County Sheriff's Department, and Los Angeles County Sheriff's Department) account for 58.5% of the decreases.