

# **JAIL PROFILE SURVEY**

## **2011, 4th QUARTER SURVEY RESULTS**

**FACILITIES STANDARDS AND OPERATIONS DIVISION  
CORRECTIONS STANDARDS AUTHORITY**

**STATE OF CALIFORNIA  
600 Bercut Drive  
Sacramento, CA 95811  
916.445.5073  
[www.csa.ca.gov](http://www.csa.ca.gov)**

# JAIL PROFILE SURVEY

## EXPLANATION OF RESULTS

The following link titles contain the Jail Profile Survey results for the fourth quarter of the calendar year 2011. **Quarterly Totals** contains the fourth quarter totals based upon the monthly and quarterly data submitted to us by the participating jurisdictions. The next six (6) link titles show the trend data for variables we have been tracking for the last ten years (**Average Number of Persons Booked**, **Average Length of Stay**, **Average Daily Population**, **Percentage Non-Sentenced**, **Non-Sentenced ADP**, and **Sentenced ADP**). The remainder of this page provides explanations and clarifications of the data presented.

### Quarterly Totals link

- Unless otherwise noted, “projected totals” are based upon the average per day for the variable in question. For example, there was an average of 72,132 inmates per day in local jails (excluding Type I’s) during the three-month span of October thru December 2011.
- For some variables (other than ADP), we did not receive complete data from all jurisdictions. In such instances, we used statistical procedures to estimate the statewide total.
- The number for “Bookings” is the average of the monthly totals for October, November, and December.
- For the following variables, the numbers presented are the totals as of the mid-quarter (i.e., November 15, 2011); Pretrial Release, Early Release, 2 and 3 Strikes, Felony Warrants, Misdemeanor Warrants, Juveniles in Custody and Undocumented Aliens.
- “Assaults” is the total number of serious inmate assaults on staff (resulting in a crime report), statewide, during the fourth quarter of calendar year 2011.
- Note: Totals are subject to slight variation due to rounding.

### Average Number of Persons Booked, Average Length of Stay, Average Daily Population, Percentage Non-Sentenced, Non-Sentenced ADP, and Sentenced ADP links

- The data in the 10-Year Summary tables are based upon survey data which the Corrections Standards Authority has gathered since the early 1980’s.
- Prior to 1995, yearly averages were reported to the CSA on an annual basis. Yearly averages from 1996 to the present time have been the average of the 12 calendar months. In 1995, the yearly figure reported is the fourth quarter average, since we do not have data from the first three quarters.

# CORRECTIONS STANDARDS AUTHORITY JAIL PROFILE SURVEY

**Reporting Period: October to December, 2011**

## County Jail Populations

ADP <sup>a</sup>	72,132 <sup>b</sup>
Holding Areas	1,237
Average "Under the Roof" <sup>c</sup>	73,369 <sup>d</sup>
Highest One Day Count	76,481 <sup>e</sup>

## Special Use Beds

Medical Beds	838
Mental Health Beds	3,641

## County Jail Populations

Felony	58,420
Misdemeanor	13,712
<b>Total</b>	<b>72,132</b>
Non-Sentenced Males	43,229
Non-Sentenced Females	5,229
Sentenced Males	20,148
Sentenced Females	3,526
<b>Total</b>	<b>72,132</b>
Maximum Security Inmates	23,339
Medium Security Inmates	30,730
Minimum Security Inmates	18,063
<b>Total</b>	<b>72,132</b>

## Released Per Month Due to Lack of Space

Pretrial Release	6,580 <sup>f</sup>
Early Release	3,831 <sup>f</sup>
<b>Total</b>	<b>10,411</b>

## Inmates with 2 and 3 Strikes

2 Strike Inmates	2,539 <sup>g</sup>
3 Strike Inmates	914 <sup>g</sup>
<b>Total</b>	<b>3,453</b>

## Unservd Warrants

Felony Warrants	227,037 <sup>g</sup>
Misdemeanor Warrants	1,397,495 <sup>g</sup>
<b>Total</b>	<b>1,624,532</b>

## Inmates From Other Jurisdictions

Housed on Federal Contract	4,556
Housed on Contract with CDC	1,330
From Other Counties on Contract	15
Awaiting Transport	1,323
<b>Total</b>	<b>7,224</b>

## Other Jail Profile Survey Variables

Bookings Per Month	82,429 <sup>f</sup>
Juveniles in Custody	0 <sup>f</sup>
Criminal / Illegal Aliens	9,684
Assaults On Staff	288

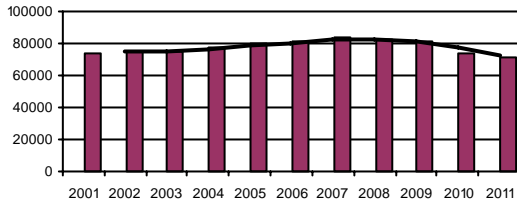
- a. The Average Daily Population for all jurisdictions (excluding Type I's) does not include inmates in holding areas.
- b. Unless otherwise indicated, the numbers reported are the average across the days in the quarter.
- c. "Under the Roof" is the sum of the Average Daily Population plus the average daily number of inmates in Holding Areas.
- d. Totals may not be the exact sum of the subtotals due to rounding.
- e. The sum of all Highest One Day inmate population counts from all jurisdictions.
- f. These data are collected on a monthly basis, this figure is an average of the total numbers collected each month during this quarter.
- g. These data are one-day snapshots collected at the end of the quarter.

# Jail Profile Survey

2011

## Average Daily Population

10 Year Summary									
2001	2002	2003	2004	2005	2006	2007	2008	2009	2010
73,824	75,096	75,243	76,887	79,705	81,104	83,184	82,397	80,866	73,445



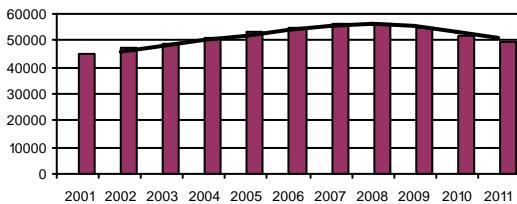
The Average Daily Population (ADP) of 72,132 for the fourth quarter of 2011 reflects a 1.2% increase over the third quarter of 2011. The ADP for the fourth quarter of 2011 is only slightly lower than the fourth quarter of 2010. The second straight quarterly increase may be attributed to AB109 Realignment.

## Quarterly Results

	Q1	Q2	Q3	Q4	Average
2010	73,993	73,701	73,793	72,306	73,445
2011	71,090	69,515	71,293	72,132	71,011

## Non-sentenced ADP

10 Year Summary									
2001	2002	2003	2004	2005	2006	2007	2008	2009	2010
45,187	47,053	49,121	50,715	53,357	54,585	56,571	56,232	54,589	52,059



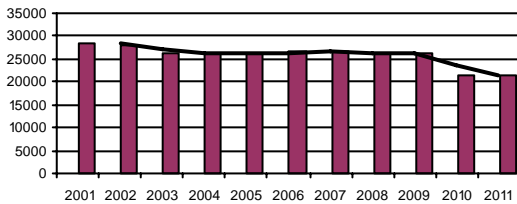
The Non-Sentenced ADP was 48,457 for the fourth quarter of 2011 reflecting a decrease of 3.8% from the third quarter of 2011 and a decrease of 5.8% from the fourth quarter of 2010.

## Quarterly Results

	Q1	Q2	Q3	Q4	Average
2010	51,932	52,619	52,221	51,466	52,059
2011	50,726	49,269	50,396	48,457	49,708

## Sentenced ADP

10 Year Summary									
2001	2002	2003	2004	2005	2006	2007	2008	2009	2010
28,637	28,043	26,121	26,171	26,347	26,519	26,613	26,165	26,277	21,386



The Sentenced ADP was 23,673 for the fourth quarter of 2011 reflecting an increase of 13.3% over the third quarter of 2011 and an increase of 13.6% over fourth quarter of 2010. This increase may be attributed to AB109 Realignment.

## Quarterly Results

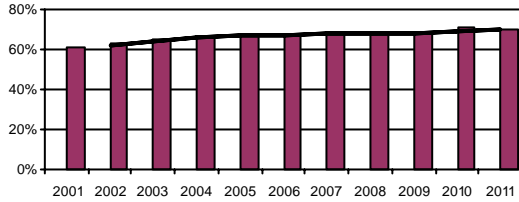
	Q1	Q2	Q3	Q4	Average
2010	22,061	21,082	21,571	20,840	21,386
2011	20,363	20,245	20,897	23,673	21,303

# Jail Profile Survey

2011

## Percentage Non-sentenced

10 Year Summary									
2001	2002	2003	2004	2005	2006	2007	2008	2009	2010
61%	63%	65%	66%	67%	67%	68%	68%	68%	71%



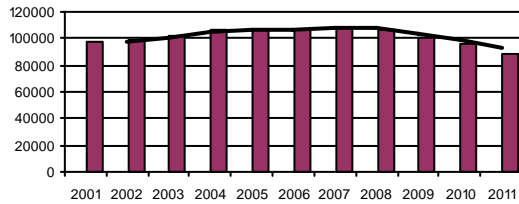
The Percentage of Non-Sentenced inmates had been averaging 71% for last four quarters. In the fourth quarter 2011 it dropped to 67%.

## Quarterly Results

	Q1	Q2	Q3	Q4	Average
2010	70%	71%	71%	71%	71%
2011	71%	71%	71%	67%	70%

## Average Number of Persons Booked Per Month

10 Year Summary									
2001	2002	2003	2004	2005	2006	2007	2008	2009	2010
97,089	98,603	102,217	106,862	107,120	106,868	108,238	107,086	101,223	96,460



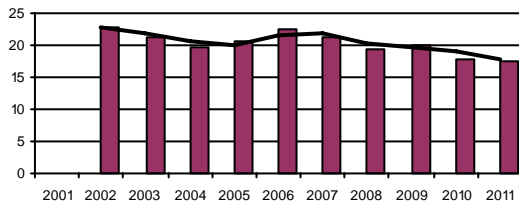
The Average Number of Persons Booked Per Month in the fourth quarter of 2011 of 82,429 reflects a 11.4% decrease from the third quarter of 2011 and an 8.6% decrease from the fourth quarter of 2010.

## Quarterly Results

	Q1	Q2	Q3	Q4	Average
2010	95,896	99,024	100,706	90,228	96,460
2011	89,030	89,960	93,062	82,429	88,614

## Average Length Of Stay

10 Year Summary									
2001	2002	2003	2004	2005	2006	2007	2008	2009	2010
	22.7	21.2	19.8	20.5	22.5	21.4	19.4	20.0	17.9



The Average Length of Stay of 18.9 days in the fourth quarter of 2011 increased 10.5% over the third quarter of 2011 and reflects a 12.5% increase over the fourth quarter of 2010.

## Quarterly Results

	Q1	Q2	Q3	Q4	Average
2010	20.3	17.1	17.5	16.8	17.9
2011	17.1	17.0	17.1	18.9	17.5

# Average Daily Population

Non-sentenced / Sentenced Male / Female

California County Jails - For Months Of October - December 2011

	Non-sentenced						Sentenced						Total
	Male		Female		Total		Male		Female		Total		
	#	%	#	%	#	%	#	%	#	%	#	%	
<b>Jurisdiction</b>													
1. Alameda Sheriff's Dept.	2,592	93%	201	7%	2,793	78%	687	90%	80	10%	767	22%	3,560
2. Amador Sheriff's Dept.	52	85%	9	15%	62	65%	26	81%	6	19%	33	35%	94
3. Butte Sheriff's Dept.	400	92%	37	8%	437	75%	115	80%	28	20%	143	25%	581
4. Calaveras Sheriff's Dept.	27	87%	4	13%	31	48%	27	79%	7	21%	34	52%	65
5. Colusa Sheriff's Dept.	26	86%	4	14%	31	59%	20	91%	2	9%	22	41%	52
6. Contra Costa Sheriff's Dept.	1,021	89%	127	11%	1,147	79%	272	91%	25	9%	297	21%	1,444
7. Del Norte Sheriff's Dept.	55	87%	8	13%	63	59%	36	83%	7	17%	44	41%	107
8. El Dorado Sheriff's Dept.	137	87%	21	13%	158	48%	142	83%	29	17%	171	52%	329
9. Fresno Sheriff's Dept.	1,565	89%	202	11%	1,767	77%	440	83%	88	17%	528	23%	2,294
10. Glenn Sheriff's Dept.	61	89%	8	11%	68	79%	15	82%	3	18%	19	21%	87
11. Humboldt Sheriff's Dept.	211	83%	43	17%	254	70%	98	88%	13	12%	111	30%	365
12. Imperial Sheriff's Dept.	339	89%	44	11%	383	76%	108	91%	11	9%	118	24%	502
13. Inyo Sheriff's Dept.	25	87%	4	13%	29	49%	20	68%	10	32%	30	51%	59
14. Kern Sheriff's Dept.	1,702	90%	184	10%	1,885	77%	470	84%	88	16%	558	23%	2,443
15. Kings Sheriff's Dept.	212	91%	20	9%	231	55%	149	80%	37	20%	186	45%	418
16. Lake Sheriff's Dept.	142	86%	23	14%	165	62%	82	80%	21	20%	103	38%	268
17. Lassen Sheriff's Dept.	35	78%	10	22%	45	61%	25	84%	5	16%	29	39%	74
18. Los Angeles Sheriff's Dept.	8,807	90%	961	10%	9,768	64%	4,672	86%	739	14%	5,411	36%	15,179
19. Madera Corrections Dept.	245	85%	42	15%	287	71%	103	89%	13	11%	117	29%	403
20. Marin Sheriff's Dept.	198	89%	25	11%	223	77%	51	77%	15	23%	66	23%	289
21. Mariposa Sheriff's Dept.	15	79%	4	21%	19	49%	16	77%	5	23%	20	51%	40
22. Mendocino Sheriff's Dept.	119	87%	18	13%	137	66%	58	82%	13	18%	70	34%	207
23. Merced Sheriff's Dept.	423	90%	48	10%	471	75%	146	94%	9	6%	155	25%	626
24. Modoc Sheriff's Dept.	13	80%	3	20%	17	70%	4	57%	3	43%	7	30%	24
25. Mono Sheriff's Dept.	13	84%	2	16%	15	57%	10	91%	1	9%	11	43%	26
26. Monterey Sheriff's Dept.	723	89%	89	11%	812	78%	189	80%	47	20%	235	22%	1,047
27. Napa Corrections Dept.	175	91%	17	9%	192	72%	63	84%	12	16%	75	28%	267
28. Nevada Sheriff's Dept.	86	85%	15	15%	101	59%	63	89%	8	11%	71	41%	172
29. Orange Sheriff's Dept.	2,708	89%	342	11%	3,051	52%	2,470	87%	370	13%	2,840	48%	5,891
30. Placer Sheriff's Dept.	303	88%	43	12%	346	64%	159	83%	32	17%	191	36%	537
31. Plumas Sheriff's Dept.	15	66%	8	34%	23	59%	13	81%	3	19%	16	41%	38
32. Riverside Sheriff's Dept.	2,260	89%	288	11%	2,548	71%	874	82%	189	18%	1,063	29%	3,611
33. Sacramento Sheriff's Dept.	2,082	94%	135	6%	2,216	56%	1,470	86%	249	14%	1,719	44%	3,935
34. San Benito Sheriff's Dept.	81	86%	14	14%	94	70%	36	89%	4	11%	40	30%	135
35. San Bernardino Sheriff's Dept.	3,625	87%	518	13%	4,143	78%	935	82%	202	18%	1,137	22%	5,280

# Average Daily Population

Non-sentenced / Sentenced Male / Female

California County Jails - For Months Of October - December 2011

	Non-sentenced						Sentenced						Total
	Male		Female		Total		Male		Female		Total		
	#	%	#	%	#	%	#	%	#	%	#	%	
36 . San Diego Sheriff's Dept.	2,378	86%	394	14%	2,772	58%	1,656	83%	346	17%	2,002	42%	4,774
37 . San Diego Work Furlough	1	66%	0	34%	1	1%	144	76%	45	24%	189	99%	190
38 . San Francisco Sheriff's Dept.	1,128	92%	102	8%	1,231	83%	215	87%	31	13%	246	17%	1,477
39 . San Joaquin Sheriff's Dept.	705	90%	82	10%	786	67%	324	83%	66	17%	390	33%	1,177
40 . San Luis Obispo Sheriff's Dept.	271	86%	46	14%	317	54%	236	87%	37	13%	272	46%	589
41 . San Mateo Sheriff's Dept.	572	90%	65	10%	637	67%	260	85%	47	15%	307	33%	944
42 . Santa Ana Police Dept.	377	87%	56	13%	433	99%	3	100%	0	0%	3	1%	437
43 . Santa Barbara Sheriff's Dept.	554	88%	75	12%	630	72%	219	87%	31	13%	250	28%	880
44 . Santa Clara Corrections Dept.	2,157	88%	300	12%	2,457	71%	833	85%	147	15%	980	29%	3,437
45 . Santa Cruz Sheriff's Dept.	225	92%	20	8%	245	61%	142	89%	18	11%	159	39%	404
46 . Shasta Sheriff's Dept.	158	88%	21	12%	180	77%	44	84%	8	16%	53	23%	232
47 . Sierra Sheriff's Dept.	3	77%	1	23%	4	76%	1	100%	0	0%	1	24%	6
48 . Siskiyou Sheriff's Dept.	71	94%	4	6%	75	82%	14	87%	2	13%	16	18%	91
49 . Solano Sheriff's Dept.	526	88%	74	12%	599	77%	152	85%	26	15%	178	23%	777
50 . Sonoma Sheriff's Dept.	422	89%	52	11%	474	49%	438	88%	58	12%	496	51%	970
51 . Stanislaus Sheriff's Dept.	785	91%	77	9%	861	81%	159	77%	47	23%	206	19%	1,067
52 . Sutter Sheriff's Dept.	131	89%	17	11%	147	82%	23	73%	8	27%	31	18%	179
53 . Tehama Sheriff's Dept.	107	89%	13	11%	120	64%	54	82%	12	18%	67	36%	187
54 . Trinity Sheriff's Dept.	11	85%	2	15%	13	24%	34	80%	8	20%	42	76%	55
55 . Tulare Sheriff's Dept.	706	88%	100	12%	806	56%	552	87%	85	13%	637	44%	1,443
56 . Tuolumne Sheriff's Dept.	56	77%	16	23%	72	59%	39	77%	12	23%	51	41%	124
57 . Ventura Sheriff's Dept.	838	87%	120	13%	959	69%	352	82%	75	18%	426	31%	1,385
58 . Ventura Work Furlough	0	0%	0	0%	0	0%	61	81%	14	19%	75	100%	75
59 . Yolo Sheriff's Dept.	251	88%	34	12%	286	74%	83	84%	16	16%	100	26%	385
60 . Yuba Sheriff's Dept.	302	89%	37	11%	339	85%	47	81%	11	19%	58	15%	397
<b>Statewide</b>	<b>43,229</b>	<b>89%</b>	<b>5,229</b>	<b>11%</b>	<b>48,457</b>	<b>67%</b>	<b>20,148</b>	<b>85%</b>	<b>3,526</b>	<b>15%</b>	<b>23,673</b>	<b>33%</b>	<b>72,131</b>

## Jail Populations: Quarter 4, 2010 Versus Quarter 4, 2011

Jurisdiction	Qtr 4, 2010	Qtr 4, 2011	Qtr 4, 2011 Minus Qtr 4, 2010	Qtr 4, 2010 To Qtr 4, 2011 % +/-	% of Total Increase or Decrease	Cum %	Cum Total
Fresno Sheriff's Dept.	1,749	2,296	547	31.3%	26.4%	26.40%	547
Riverside Sheriff's Dept.	3,277	3,611	334	10.2%	16.1%	42.52%	881
Orange Sheriff's Dept.	5,609	5,891	282	5.0%	13.6%	56.13%	1,163
San Diego Sheriff's Dept.	4,618	4,774	156	3.4%	7.5%	63.66%	1,319
Tulare Sheriff's Dept.	1,293	1,443	150	11.6%	7.2%	70.90%	1,469
Kern Sheriff's Dept.	2,338	2,444	106	4.5%	5.1%	76.01%	1,575
San Luis Obispo Sheriff's Dept.	486	590	104	21.4%	5.0%	81.03%	1,679
Kings Sheriff's Dept.	348	417	69	19.8%	3.3%	84.36%	1,748
Lake Sheriff's Dept.	201	268	67	33.3%	3.2%	87.60%	1,815
Sonoma Sheriff's Dept.	904	970	66	7.3%	3.2%	90.78%	1,881
Butte Sheriff's Dept.	540	580	40	7.4%	1.9%	92.71%	1,921
Madera Corrections Dept.	374	403	29	7.8%	1.4%	94.11%	1,950
Placer Sheriff's Dept.	513	537	24	4.7%	1.2%	95.27%	1,974
Modoc Sheriff's Dept.	13	24	11	84.6%	0.5%	95.80%	1,985
El Dorado Sheriff's Dept.	318	329	11	3.5%	0.5%	96.33%	1,996
Tuolumne Sheriff's Dept.	114	123	9	7.9%	0.4%	96.77%	2,005
Ventura Work Furlough	66	74	8	12.1%	0.4%	97.15%	2,013
Monterey Sheriff's Dept.	1,040	1,047	7	0.7%	0.3%	97.49%	2,020
Siskiyou Sheriff's Dept.	84	91	7	8.3%	0.3%	97.83%	2,027
Lassen Sheriff's Dept.	68	75	7	10.3%	0.3%	98.17%	2,034
Colusa Sheriff's Dept.	45	52	7	15.6%	0.3%	98.50%	2,041
Trinity Sheriff's Dept.	49	55	6	12.2%	0.3%	98.79%	2,047
Glenn Sheriff's Dept.	82	87	5	6.1%	0.2%	99.03%	2,052
Amador Sheriff's Dept.	90	94	4	4.4%	0.2%	99.23%	2,056
Shasta Sheriff's Dept.	229	233	4	1.7%	0.2%	99.42%	2,060
San Benito Sheriff's Dept.	130	134	4	3.1%	0.2%	99.61%	2,064
Tehama Sheriff's Dept.	183	187	4	2.2%	0.2%	99.81%	2,068
Calaveras Sheriff's Dept.	63	65	2	3.2%	0.1%	99.90%	2,070
Napa Corrections Dept.	265	267	2	0.8%	0.1%	100.00%	2,072
Sierra Sheriff's Dept.	6	6	0	0.0%	0.0%	100.00%	2,072
Marin Sheriff's Dept.	293	290	-3	-1.0%	0.1%	0.13%	-3
Mariposa Sheriff's Dept.	42	39	-3	-7.1%	0.1%	0.27%	-6
Nevada Sheriff's Dept.	177	172	-5	-2.8%	0.2%	0.49%	-11
Del Norte Sheriff's Dept.	111	106	-5	-4.5%	0.2%	0.71%	-16
Plumas Sheriff's Dept.	44	38	-6	-13.6%	0.3%	0.98%	-22
Mono Sheriff's Dept.	34	26	-8	-23.5%	0.4%	1.33%	-30
Merced Sheriff's Dept.	637	626	-11	-1.7%	0.5%	1.82%	-41
Sutter Sheriff's Dept.	192	179	-13	-6.8%	0.6%	2.40%	-54
Inyo Sheriff's Dept.	73	59	-14	-19.2%	0.6%	3.02%	-68
Stanislaus Sheriff's Dept.	1,084	1,067	-17	-1.6%	0.8%	3.77%	-85
Yuba Sheriff's Dept.	417	397	-20	-4.8%	0.9%	4.66%	-105
San Joaquin Sheriff's Dept.	1,196	1,176	-20	-1.7%	0.9%	5.55%	-125
Santa Barbara Sheriff's Dept.	901	880	-21	-2.3%	0.9%	6.48%	-146
San Diego Work Furlough	211	190	-21	-10.0%	0.9%	7.41%	-167
Humboldt Sheriff's Dept.	388	365	-23	-5.9%	1.0%	8.43%	-190
Santa Cruz Sheriff's Dept.	433	403	-30	-6.9%	1.3%	9.76%	-220
Santa Ana Police Dept.	468	436	-32	-6.8%	1.4%	11.19%	-252
Yolo Sheriff's Dept.	420	385	-35	-8.3%	1.6%	12.74%	-287
Mendocino Sheriff's Dept.	242	206	-36	-14.9%	1.6%	14.34%	-323
Solano Sheriff's Dept.	829	778	-51	-6.2%	2.3%	16.60%	-374
Los Angeles Sheriff's Dept.	15,251	15,178	-73	-0.5%	3.2%	19.84%	-447
Imperial Sheriff's Dept.	575	502	-73	-12.7%	3.2%	23.08%	-520
Ventura Sheriff's Dept.	1,460	1,385	-75	-5.1%	3.3%	26.41%	-595
San Mateo Sheriff's Dept.	1,024	944	-80	-7.8%	3.6%	29.96%	-675
Contra Costa Sheriff's Dept.	1,608	1,444	-164	-10.2%	7.3%	37.24%	-839
San Bernardino Sheriff's Dept.	5,498	5,280	-218	-4.0%	9.7%	46.92%	-1,057
Santa Clara Corrections Dept.	3,664	3,437	-227	-6.2%	10.1%	56.99%	-1,284
San Francisco Sheriff's Dept.	1,725	1,477	-248	-14.4%	11.0%	68.00%	-1,532
Alameda Sheriff's Dept.	3,911	3,560	-351	-9.0%	15.6%	83.58%	-1,883
Sacramento Sheriff's Dept.	4,306	3,936	-370	-8.6%	16.4%	100.00%	-2,253
	72,309	72,128	-181				

Note: Totals subject to slight variation due to rounding

Total Increase: 2,072  
Total Decrease: -2,253



### Interpretation of Table:

## **JAIL POPULATIONS: 4<sup>th</sup> Qtr Calendar Year '10 versus 4<sup>th</sup> Qtr Calendar Year '11**

This table:

- summarizes the ADP results for the 60 jurisdictions in California reporting data from Type II, III, and IV jails;
- summarizes jurisdiction ADP results for the most recent quarter (Column C);
- compares jurisdiction ADP for the most recent quarter with the same quarter last year (Column B);
- ranks the jurisdictions in terms of gains or losses in ADP from high to low (Column D);
- lists the percentage growth or decline in ADP for each jurisdiction (Column E);
- lists the percentage of the overall State increase or decrease in ADP that is represented by each jurisdiction (Column F);
- lists, by jurisdiction, the cumulative percentage increase and decrease in the State ADP starting with the jurisdiction with the highest percentage of the increase and proceeding to the jurisdiction with the highest percentage of the decrease (Column G);
- lists, by jurisdiction, the cumulative total increase and decrease in the State ADP starting with the jurisdiction with the highest increase and proceeding to the jurisdiction with the biggest decrease (Column H); and,
- lists the jurisdictions that experienced decreases in their ADP as shaded.

Some important conclusions from this table are:

1. The two numbers at the bottom indicate the "total increase" in ADP (in this case 2,072) and "total decrease" in ADP (2,253). In other words, the jurisdictions experiencing increases had a total increase of 2,072 ADP; and the jurisdictions experiencing decreases had a total decrease of 2,253 ADP. Subtracting 2,072 from 2,253 produces the overall decrease of 181 between the fourth quarter of calendar year 2010 and the fourth quarter of calendar year 2011.
2. The Fresno County Sheriff's Department ADP increase of 547 is 26.4% of the total increase of 2,072. Twenty-nine jurisdictions had increases (down to Napa Corrections Department) with one jurisdiction (Sierra County Sheriff's Department) reporting no change. When you get to Napa Corrections Department, you have accounted for 100% of the increases (100% of the cumulative total of 2,072).
3. Jurisdictions that experienced a decrease in ADP are listed from smallest decrease to largest decrease (Marin County Sheriff's Department to Sacramento County Sheriff's Department). When you get to the bottom of the table, you have accounted for 100% of the total decreases of 2,253 inmates.
4. The cumulative percentage of ADP increase for the top four jurisdictions (Fresno County Sheriff's Department, Riverside County Sheriff's Department, Orange County Sheriff's Department, and San Diego County Sheriff's Department) is 63.66%. In other words, four jurisdictions accounted for over 63% of the total ADP increase. Four jurisdictions (Santa Clara Corrections Department, San Francisco Sheriff's Department, Alameda County Sheriff's Department, and Sacramento County Sheriff's Department) account for 53.1% of the decreases.