



JUVENILE DETENTION PROFILE SURVEY

FOURTH QUARTER CALENDAR YEAR 2014
SURVEY RESULTS



EXPLANATION OF RESULTS

The following pages contain the Juvenile Detention Profile Survey (JDPS) results for the Fourth Quarter of Calendar Year 2014. Page 2 contains totals for major categories such as the average daily population (ADP), highest one-day population, gender, and age range of detained minors. Page 3 contains information regarding counties' ADP and rated capacity (RC) breakouts, and page 4 contains information about a wide range of juvenile detention facility issues, including mental health needs, crowding, number of bookings, and average length of stay.

Pages 5, 6, and 7 contain trend information compiled from Calendar Year 2009 through Calendar Year 2014. The trend data is separated into Juvenile Hall related data and Camp related data.

Please keep the following in mind when reviewing this information:

- For overall capacity, crowding (highest one-day population – the count of minors in detention on the day of each county's highest population) and ADP (the average daily detention population for the reporting period), we have complete data from all jurisdictions in the state that operate juvenile detention facilities.
- Each jurisdiction provides us with the average population, computed across all the days in the month, for each of the three months in the quarter. The weighted average across the three months is then computed for each jurisdiction (with the monthly averages weighted by the number of days in the month). The jurisdictions' ADPs are then combined to produce the state's total ADP.
- For some variables (other than ADP), we did not receive complete data from all jurisdictions. In such instances, we used statistical procedures to estimate the statewide total.
- Felony/misdemeanor, gender counts, and age-range breakouts are based upon a one-day snapshot (on the 15th day of the final month of the quarter). These values are used to determine the percentage of the population in each felony/misdemeanor, gender, and age-range category. The percentages are then applied to the total ADP to project the expected ADP in each of the felony/misdemeanor, gender, and age-range categories.
- In addition to the population breakdowns for juvenile halls and camps, the report contains like information for youth who were part of non-facility based, alternative to detention programs. Youth in that category are listed under "Other Detention." Other detention includes home supervision with and without electronic monitoring, day reporting centers, work programs, and other alternatives to detention **for which youth are credited with custody time.**
- ***Please note:***
 - In early 2011, eight regional trainings were held for county reporters and contributors to the JDPS. When interpreting the JDPS results from the second quarter of 2011 forward, please consider that the clarification of variable definitions and calculations which occurred at those trainings may explain some unanticipated differences when compared to prior quarters.
 - Each quarter, every county with juvenile detention facilities submits their data to the Board of State and Community Corrections (BSCC). While we make every effort to review data for accuracy, including contacting individual counties for clarification, the BSCC cannot be responsible for data reporting errors made at the county level.

**Board of State and Community Corrections
 Juvenile Detention Profile Survey - 4th Quarter, 2014
 Overall Capacity, Population and ADP**

Overall Capacity and Population							
	JUVENILE HALL		CAMPS		OTHER	TOTAL	
ADP	3,507.3		1,978.1		1,415.6	6,901.1	
Percent of Total	50.8%		28.7%		20.5%	100.0%	
RC *	8,240.0		4,730.0			12,970.0	
High One Day	4,068.0		2,181.0			6,249.0	

Gender by Detention Type								
	JUVENILE HALL		CAMPS		OTHER		TOTAL	
GENDER	ADP	%	ADP	%	ADP	%	ADP	%
Male	2,943.3	83.9%	1,833.2	92.7%	1,193.6	84.3%	5,970.1	86.5%
Female	564.0	16.1%	144.9	7.3%	222.1	15.7%	931.0	13.5%
TOTAL	3,507.3	100.0%	1,978.1	100.0%	1,415.6	100.0%	6,901.1	100.0%

Disposition by Gender for Juvenile Halls							
	MALE		FEMALE		TOTAL		
DISPOSITION	Number	%	Number	%	Number	%	
Pre-Disposition	1,590.3	54.0%	293.3	52.0%	1,883.6	53.7%	
Post-Disposition	1,353.0	46.0%	270.7	48.0%	1,623.7	46.3%	
TOTAL	2,943.3	100.0%	564.0	100.0%	3,507.3	100.0%	

Disposition by Gender for Other Detention							
	MALE		FEMALE		TOTAL		
DISPOSITION	Number	%	Number	%	Number	%	
Pre-Disposition	611.9	51.3%	105.9	47.7%	717.8	50.7%	
Post-Disposition	581.6	48.7%	116.2	52.3%	697.9	49.3%	
TOTAL	1,193.6	100.0%	222.1	100.0%	1,415.6	100.0%	

Age Range by Type of Detention (One-Day Snapshot)							
	JUVENILE HALL		CAMPS		TOTAL		
AGE RANGES	Number	%	Number	%	Number	%	
Under 12	2.0	0.1%	0.0	0.0%	2.0	0.0%	
12 to 14	347.0	10.4%	120.0	6.1%	467.0	8.8%	
15 to 17	2,599.0	78.0%	1,465.0	74.9%	4,064.0	76.8%	
18 Over	384.0	11.5%	372.0	19.0%	756.0	14.3%	
TOTAL	3,332.0	100.0%	1,957.0	100.0%	5,289.0	100.0%	

* RC is Rated Capacity which is the number of beds that comply with standards set forth in Title 24, California Code of Regulations.

**County Breakout Report - 4th Quarter, 2014
Facilities and Alternative Detention**

	County	Rated Capacity	Facilities Detention	Other Detention	ADP	Percent of Total	Cumulative Percent
1	Los Angeles	3,554	1,332.3	431.16	1,763.5	25.55%	25.55%
2	San Diego	1,105	450.7	154.98	605.7	8.78%	34.33%
3	Fresno	450	296.3	122.99	419.3	6.08%	40.41%
4	Orange	743	324.1	56.30	380.4	5.51%	45.92%
5	Kern	485	324.1	0.00	324.1	4.70%	50.61%
6	Sacramento	424	176.6	138.72	315.3	4.57%	55.18%
7	San Bernardino	484	298.2	0.00	298.2	4.32%	59.50%
8	Santa Clara	474	149.0	101.38	250.4	3.63%	63.13%
9	Tulare	330	146.8	94.97	241.7	3.50%	66.64%
10	Riverside	466	192.9	22.36	215.2	3.12%	69.75%
11	Contra Costa	390	213.0	0.00	213.0	3.09%	72.84%
12	San Mateo	245	122.4	72.34	194.7	2.82%	75.66%
13	Alameda	463	183.9	0.00	183.9	2.66%	78.33%
14	Monterey	190	90.9	30.70	121.6	1.76%	80.09%
15	San Joaquin	224	119.4	0.00	119.4	1.73%	81.82%
16	Stanislaus	218	90.4	26.03	116.4	1.69%	83.51%
17	Sonoma	164	75.7	37.22	112.9	1.64%	85.14%
18	Santa Barbara	232	92.0	0.00	92.0	1.33%	86.48%
19	Merced	120	52.1	33.38	85.5	1.24%	87.71%
20	San Francisco	198	83.3	0.00	83.3	1.21%	88.92%
21	Ventura	420	77.0	0.00	77.0	1.12%	90.04%
22	Madera	70	54.3	12.28	66.6	0.97%	91.00%
23	Solano	148	62.0	0.00	62.0	0.90%	91.90%
24	Kings	85	54.0	4.66	58.7	0.85%	92.75%
25	Yolo	90	26.3	29.32	55.7	0.81%	93.56%
26	Yuba	120	51.5	0.00	51.5	0.75%	94.30%
27	Shasta	90	26.0	10.96	37.0	0.54%	94.84%
28	Humboldt	44	27.5	4.89	32.4	0.47%	95.31%
29	Butte	120	32.0	0.34	32.3	0.47%	95.78%
30	El Dorado	80	22.3	6.36	28.7	0.42%	96.19%
31	San Luis Obispo	45	28.6	0.00	28.6	0.41%	96.61%
32	Del Norte	62	25.7	0.00	25.7	0.37%	96.98%
33	Lake	30	11.0	12.36	23.4	0.34%	97.32%
34	Placer	78	22.0	0.00	22.0	0.32%	97.64%
35	Napa	50	18.7	0.00	18.7	0.27%	97.91%
36	Santa Cruz	42	18.2	0.00	18.2	0.26%	98.17%
37	Marin	40	11.3	5.64	16.9	0.24%	98.42%
38	Tehama	60	16.6	0.00	16.6	0.24%	98.66%
39	Lassen	40	11.6	4.33	16.0	0.23%	98.89%
40	Siskiyou	40	14.3	0.00	14.3	0.21%	99.10%
41	Nevada	60	13.4	0.66	14.0	0.20%	99.30%
42	Glenn	22	12.0	0.00	12.0	0.17%	99.47%
43	Imperial	72	11.2	0.00	11.2	0.16%	99.64%
44	San Benito	20	9.3	1.33	10.7	0.15%	99.79%
45	Mendocino	43	9.7	0.00	9.7	0.14%	99.93%
46	Inyo	14	4.7	0.00	4.7	0.07%	100.00%
47	Mariposa	4	0.0	0.00	0.0	0.00%	100.00%
48	Trinity	22	0.0	0.00	0.0	0.00%	100.00%
49	Tuolumne	0	0.0	0.00	0.0	0.00%	100.00%
		12,970	5,485.4	1,415.6	6,901.1	100.00%	

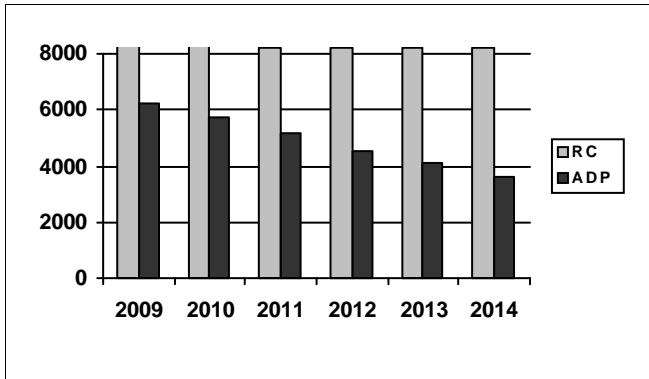
*ADP on County Breakout Report may not equal ADP on other Summary Reports due to rounding

Juvenile Detention Profile Survey

4th Quarter Report 2014	One Day Snapshot										
	Rated Capacity	Misdemeanor		Felony		Pre-Disposition		Post-Disposition		Total ADP	
		Male	Female	Male	Female	Male	Female	Male	Female		
Juvenile Halls	8,240.0	15.4%	4.9%	27.1%	3.4%	1,590.3	293.3	1,353.0	270.7	3,507.3	
Camps / Ranches	4,730.0	6.6%	1.4%	20.3%	1.7%			1,833.2	144.9	1,978.1	
Other Juveniles in the System		Male	Female	Male	Female	Male	Female	Male	Female	Total ADP	
Juveniles on home supervision with electronic monitoring		3.8%	0.8%	6.6%	1.2%	424.2	72.8	382.3	68.3	947.5	
Juveniles on home supervision without electronic monitoring		1.6%	0.6%	2.3%	0.4%	186.4	33.1	123.9	34.5	378.0	
Juveniles alternative confinement programs		0.5%	0.1%	1.4%	0.1%	1.3	0.0	75.4	13.5	90.1	
Grand Totals		27.9%	7.7%	57.6%	6.7%	2,202.2	399.2	3,767.9	531.8	6,901.1	
Mental Health Snapshot											
Number of open mental health cases this day									3,737.3		
Number of juveniles receiving psychotropic medication									1,447.7		
Crowding											
Average daily population of juveniles in other jurisdictions DUE TO LACK OF SPACE									0.0		
Number of juveniles released early DUE TO LACK OF SPACE									0.0		
Average number of days that one or more facilities in a county exceeded the Rated Capacity									0.0		
Average Bookings Per Month											
Number of Juvenile Hall bookings/admissions									4,029.3		
Number of bookings for weapon-related offenses									261.3		
Number of 601 bookings									13.4		
Number of 777 bookings									889.3		
Number of direct file {WIC 602(b) and 707(d)} bookings									40.7		
Final Month of the Quarter (One-Day Snapshot)											
Detained for 707b Offense									640.0		
Awaiting placement									402.0		
Awaiting transport to a camp									147.0		
Awaiting transfer to Youth Authority									56.0		
Court commitments to juvenile hall (Ricardo M)									442.0		
Found unfit per 707.01 WIC									43.0		
Direct files to Adult Court-602(b) and 707(d) WIC									300.0		
Hospitalized outside detention facility for MEDICAL CARE									6.0		
Hospitalized outside detention facility for MENTAL HEALTH CARE									4.0		
Believed to be criminal illegal aliens									102.9		
Average Length of Stay											
Juvenile Hall (all releases)									26.7		
Juvenile Hall to Camps									32.1		
Juvenile Hall to other out-of-home placements (i.e. group homes or foster homes)									45.8		
Juvenile Hall who were found unfit (per juvenile court)									383.5		
Juvenile Hall who were direct filings to adult court									335.0		
Camps (all releases)									127.6		
Cumulative Total for the Quarter											
Detention Behavior						Juvenile Halls		Camps / Ranches		Other Detention	
Assaults by juveniles on staff						31.0		2.0		0.0	
Escapes						0.0		32.0		5.0	
Suicide Attempts						42.5		7.0		0.0	
Suicides						0.0		1.0		0.0	

Fourth Quarter Report, 2014 - Juvenile Hall Data

Rated Capacity RC and ADP for Juvenile Halls

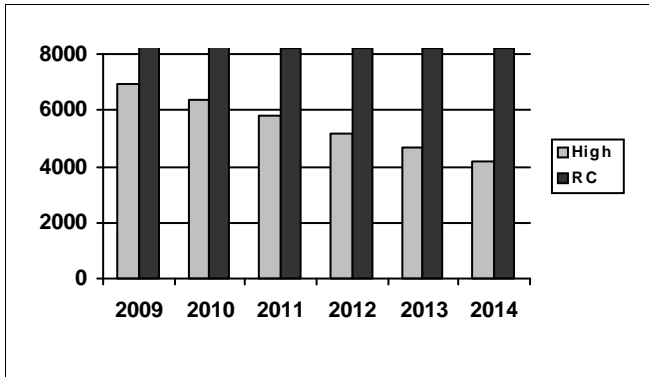


Fourth quarter ADP continues to fall and stay below the Juvenile Halls' rated capacity. Between the first and fourth quarter of 2014, the ADP decreased by 4.75%. The 2014 annual ADP of 3,639 is 11.3% lower than the previous year's annual ADP and has decreased 48.8% since the year 2000, which had the highest ADP recorded (7,108).

Summary of Juvenile Hall ADP				
2009	2010	2011	2012	2013
6,197	5,721	5,137	4,546	4,103

2014 Summary of Juvenile Hall ADP				
Q1	Q2	Q3	Q4	Average
3,682	3,803	3,565	3,507	3,639

Juvenile Hall Highest One-Day Population and RC

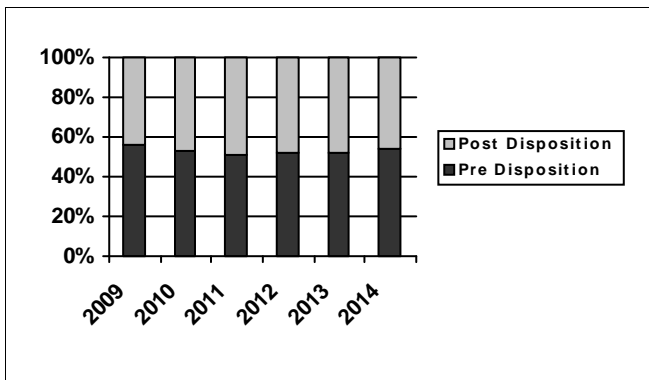


In 2006, the annual average of the highest one day population peaked at a record of 7,837, which was 96% of that year's rated capacity. Eight years later, the annual average has decreased by 46.7%.

Summary of Juvenile Hall Highest One Day				
2009	2010	2011	2012	2013
6,914	6,386	5,795	5,154	4,687

2014 Summary of Highest One-Day Population				
Q1	Q2	Q3	Q4	Average
4,198	4,286	4,166	4,068	4,179

Pre-Disposition in Juvenile Halls



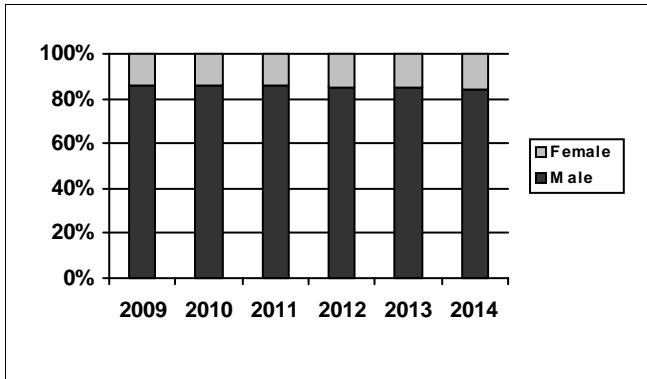
In 2014, Juvenile Halls saw a slight increase in the number of youth with a pre-disposition status. The annual average 2014 percentage of pre-disposition status is approximate to the 2010 annual average levels and accounts for over 50% of the total Juvenile Hall population.

Summary of Pre-Disposition in Juvenile Halls				
2009	2010	2011	2012	2013
56%	53%	51%	52%	52%

2014 Summary of Pre-Disposition Juvenile Halls				
Q1	Q2	Q3	Q4	Average
54%	54%	53%	54%	54%

Fourth Quarter Report, 2014 - Juvenile Hall Data

Gender Distribution in Juvenile Halls

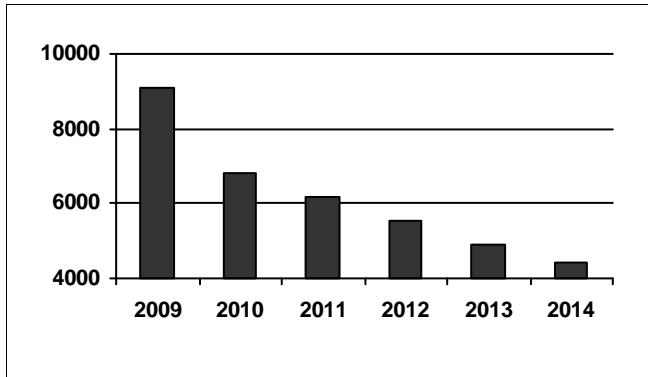


The annual average 2014 gender distribution in Juvenile Halls was 84% male and 16% females. Since 2007, females have made up 14% to 15% of the Juvenile Hall population statewide. This year marks the first year since 2006 that females account for 16% of the Juvenile Hall population.

Summary of Males in Juvenile Halls				
2009	2010	2011	2012	2013
86%	86%	86%	85%	85%

2014 Summary of Males in Juvenile Hall				
Q1	Q2	Q3	Q4	Average
85%	84%	84%	84%	84%

Average Number of Juveniles Booked per Month

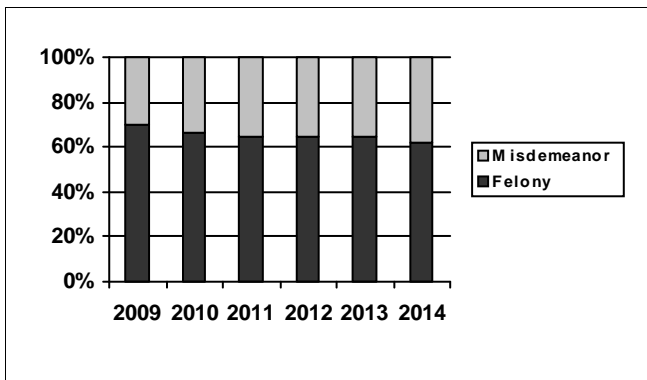


The annual average of Juvenile Hall bookings continues to decline. The fourth quarter of 2014 marked the lowest quarterly average number of bookings to date, and 2014 ended with the lowest annual average of 4,401. Comparing 2014's annual average to the year with the highest average (10,892 in 1999), this represents a 59.6% decrease.

Summary of Juveniles Booked per Month				
2009	2010	2011	2012	2013
9,079	6,802	6,202	5,556	4,881

2014 Summary of Monthly Bookings				
Q1	Q2	Q3	Q4	Average
4,581	4,739	4,264	4,029	4,401

Distribution of Charge in Juvenile Halls



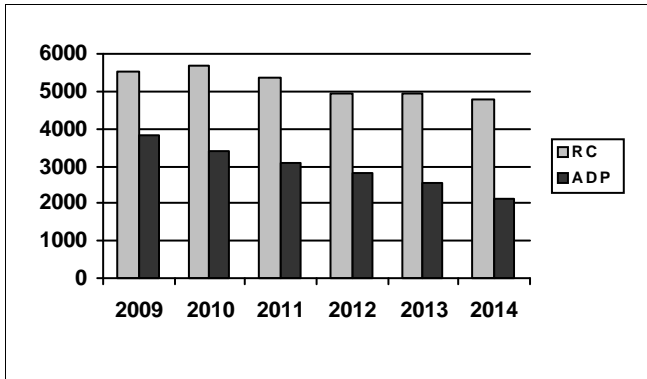
The first two quarters of 2014 showed that 64% of the Juvenile Hall population were charged with a felony offense. After a decline in the third quarter of 2014, the fourth quarter of 2014 continued to decline and ended the year with an annual average of 62% with a felony offense and 38% with a misdemeanor. After three years of having an annual average felony percentage of 65%, the 2014 annual average felony percentage is the lowest percentage in the history of this report.

Summary of Felony Charges in Juvenile Halls				
2009	2010	2011	2012	2013
70%	66%	65%	65%	65%

2014 Summary of Felony Charge Juvenile Hall				
Q1	Q2	Q3	Q4	Average
64%	64%	61%	60%	62%

Fourth Quarter Report, 2014 - Camp Data

RC and ADP for Camps

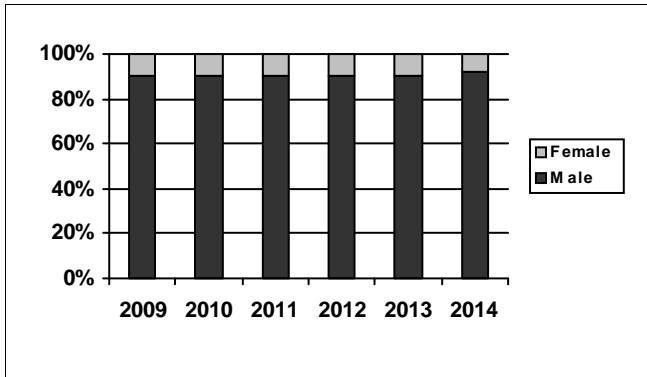


Just as California's Juvenile Hall ADP continues to decline, the annual Camp ADP shows the same downward trend. The fourth quarter of 2014 Camps ADP of 1,978 is the first quarter in the history of this report that Camps had an average daily population below 2,000. The 2014 annual Camp population average is 2,426 lower than the highest year's annual average population (4,566 in 1999) and represents a 53% decline in ADP.

Summary of Camp ADP				
2009	2010	2011	2012	2013
3,841	3,374	3,105	2,811	2,524

2014 Summary of Camp ADP				
Q1	Q2	Q3	Q4	Average
2,267	2,195	2,124	1,978	2,140

Gender Distribution in Camps

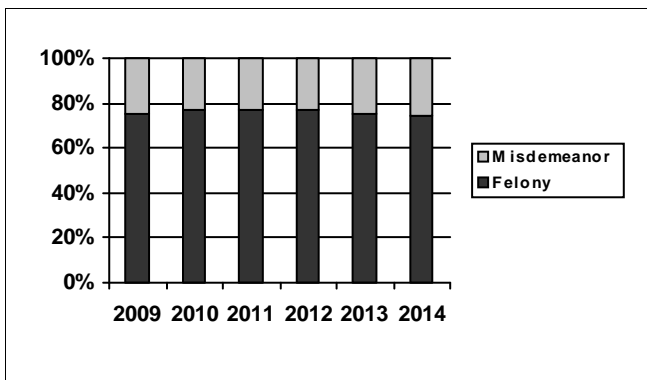


Over the past six years (2008-2013), females have made up 10% of the total Camp population. In 2014, there was a decline in the female population, with females accounting for only 8% of the total annual average Camp population; this being the lowest since 2001.

Summary of Males in Camps				
2009	2010	2011	2012	2013
90%	90%	90%	90%	90%

2014 Summary of Males in Camps				
Q1	Q2	Q3	Q4	Average
91%	93%	91%	93%	92%

Distribution of Charge in Camps



In 2010, 2011, and 2012, the percentage of youth in Camps charged with a felony offense was at an all-time high, accounting for 77% of the total population. Similar to California's Juvenile Halls, Camps have seen the percentage of those charged with a felony slowly declining while the misdemeanor population is slowly increasing. 2014 saw an annual average of 74% of those with a felony offense in Camps.

Summary of Felonies in Camps				
2009	2010	2011	2012	2013
75%	77%	77%	77%	75%

2014 Summary of Felonies in Camps				
Q1	Q2	Q3	Q4	Average
75%	77%	73%	73%	74%

INSTRUCTIONS FOR INTERPRETING THE SURVEY REPORT

The **Overall Capacity, Population and ADP page** is designed to present the JDPS results for the major reporting categories.

- **Capacity:** this category presents the RC in terms of the number of beds in juvenile halls and camps/ranches that meet the BSCC standards.
- **High One Day:** for each month in the quarter, each jurisdiction reports the juvenile hall and camp/ranch populations that together constituted the highest one-day count of the month.
- **Other:** this category refers to the sum of all juveniles who are receiving custody credit while on home supervision, with or without electronic monitoring, or are in alternative confinement programs.

The **County Breakout Report page** is designed to present county-specific information.

- **County comparison:** this page identifies the ADP for each county and the percent that county contributes to the total state juvenile detention population. The counties are ranked in descending order based on their percentage of the overall juvenile detention population in the state.

The **JDPS additional information page** is designed to present all the remaining JDPS results not already listed.

- **One Day Snapshot:** the percentages in this section are percentages of the total ADP for juvenile halls, camps/ranches, and other juveniles in the system.
- **Average number of days that one or more facilities in a county exceeded the RC:** this value is the result of taking all of the counties “number of days of crowding” and averaging the figures submitted by all the jurisdictions. If a jurisdiction had no crowding days, that jurisdiction was not included in the computation. In other words, the value presented indicates the typical number of crowding days per month experienced by jurisdictions that have had one or more days of crowding in the Fourth Quarter of Calendar Year 2014.
- **Average Length of Stay:** these numbers are averages for all juveniles in each category:
 - 1) “Juvenile Hall (all releases)” is computed by first taking the mean length of stay for all juveniles released from juvenile halls in a jurisdiction. Next, all the jurisdictions’ means are averaged to produce a statewide figure.
 - 2) “Juvenile Hall to Camps [ranches]” is computed in the same fashion, but includes only those juveniles released from juvenile hall and placed in a camp or ranch.
 - 3) “Juvenile Hall to other out-of-home placements (i.e. group homes or foster homes)” presents the average length of stay for that subset of juveniles.