

MERCED COUNTY

COMMUNITY CORRECTIONS PARTNERSHIP

**Budget Year
2021/2022**



PUBLIC SAFETY REALIGNMENT PLAN



TABLE OF CONTENTS

Executive Committee of the Community Corrections Partnership.....	3
Adult Services Committee of the Community Corrections Partnership.....	4-5
Trident Center.....	6
Merced County Probation Department.....	7
Sanctions and Incentives Matrix	8
Public Safety Realignment Background/Data.....	9
Pre-Trial Services.....	10
Merced County Sheriff’s Alternative to Incarceration Program.....	11
Merced County Jail Re-Entry Program.....	12
Leadership for Life Program.....	13-14
Day Reporting Center.....	15-16
Transitional Housing Program.....	17-18
Phoenix Project.....	19-20
K-9 Program.....	21-22
ACE Overcomers Program.....	23-24
Life Line Community Development/PACT Program	25-26
Breaking Barriers.....	27
Symple Equazion/Symple Soul.....	28
Proposed Budget FY 21/22.....	29
Recommendations of the Executive Committee FY 21/22.....	30

Executive Committee of the Community Corrections Partnership

Donald Proietti, Presiding Judge, Superior Court

Kimberly Lewis, District Attorney

Vern Warnke, Sheriff

Yvonna Brown, Director, Health and Human Services Agency

Jason Hedden, Acting Police Chief, Los Banos Police Department

Vincent Andrade, Public Defender

Genevieve Valentine, Director, Behavioral Health & Recovery Services

Kalisa Rochester, Chief Probation Officer (Chair)

1880 Wardrobe Ave.

Merced, Ca 95340

ADULT SERVICES COMMITTEE OF THE COMMUNITY CORRECTIONS PARTNERSHIP (CCP)

This sub-group of the CCP meets quarterly and welcomes all members of the CCP, concerned citizens, county service providers, and community based organizations. Serving as official CCP meetings, the Adult Services Committee of the CCP complies with Brown Act requirements, including Public posting in County Administration locations and on the Probation Department’s website. The meetings serve several functions, not limited to the following:

- Program data/outcomes
- Opportunity for service providers to give updates
- Information on related community activities
- Notices concerning program transition celebrations
- Consultation from county service providers
- Opportunities for the public to provide feedback concerning Merced County CCP

Committee Members and Guests

Christopher Henn, Deputy Chief Probation Officer (Chair)	Probation Department
Sarah Marsh, Director of Administrative Services	Probation Department
Lisa Maples, Deputy Chief Probation Officer	Probation Department
Joel Daffron, Program Manager	Probation Department
Joseph Owens, Program Manager	Probation Department
Shoua Her, Program Manager	Probation Department
Dionne Loera, Supervising Probation Officer	Probation Department
Eddie Hazel, Supervising Probation Officer	Probation Department
Jason Garcia, Supervising Probation Officer	Probation Department
Mariela Gutierrez, Supervising Probation Officer	Probation Department
Tristin Gresham, Program Specialist	Probation Department
Melvin McKinney, Peer Support Specialist	Probation Department
Jeff Coburn, Captain	Merced Sheriff’s
Brittany Howell, Corrections Officer	Merced Sheriff’s
John Hendon, Corrections Officer	Merced Sheriff’s

Committee Members and Guests Continued

Jessica Mazlum, Business Development Director, Western Region	BI/GEO Group
Humberto Sanchez, Central California Regional Manager	BI/GEO Group
Reno Bandoni, Program Manager	BI/GEO Group
Feliza Gray, Deputy Director	Human Services Agency
Holly Newlon, Director of Educational Services	Merced County Office of Education
Toula Eccles, Career Educator	Merced County Office of Education
David Carr, Director of Bridge to Hope	Merced Rescue Mission
Jeff Sabeau, Division Director	Behavioral Health & Recovery Services
Lindsey Johnson, Management Analyst	Merced County CEO's Office
Justin Melden, Commander	Los Banos Police Department
Dave Lockridge, Executive Director	ACE Overcomers
Monika Grasley, Executive Director	LifeLine CDC



THE TRIDENT CENTER

Enhancing public safety through a multi-disciplinary effort utilizing evidence based practices for offender rehabilitation.

The Trident Center is located in the Central area of the city of Merced and is occupied by employees of the Merced County Sheriff's Office, Merced County Probation Department, Health and Human Services Agency (as needed) and Behavioral Health and Recovery Services. Through evidence-based practices, the multi-disciplinary effort employs a three-pronged approach focused on public safety, reduced recidivism through rehabilitation, and alternatives to custody. Deputy Probation Officers assigned to the Trident Center provide intensive supervision of the Post Release Community Supervision and Mandatory Supervision populations. Deputy Probation Officers administer the STRONG Risk/Needs assessment tool to determine each client's criminogenic risk factors which can be changed through application of culturally, developmentally and gender appropriate interventions, teaching new skills and building on the client's strengths to mitigate criminality.



MERCED COUNTY PROBATION DEPARTMENT

The Probation Department is responsible for the supervision of offenders released from county jail on mandatory supervision or released from the California Department of Corrections and Rehabilitation on Post Release Community Supervision.

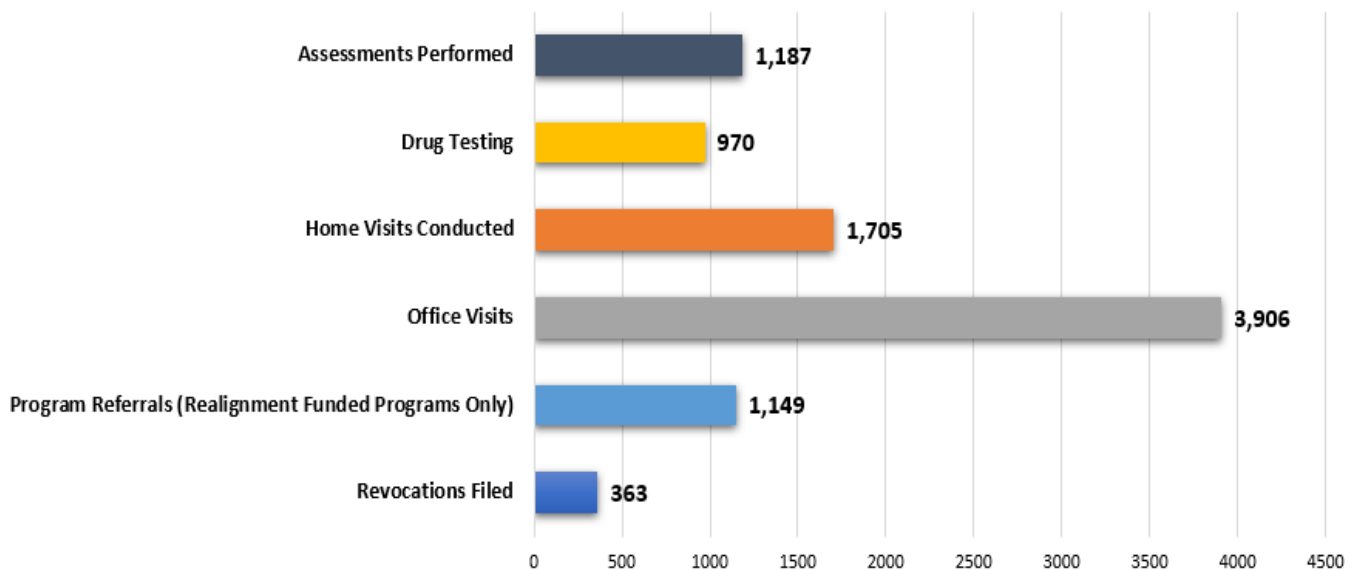


Probation Officers refer offenders to services designed to reduce recidivism and crime, along with enforcing terms and conditions of release. Probation Officers enforce terms and conditions of release by performing searches, conducting home visits, preparing revocation reports, writing new law violation reports, drug testing and monitoring progress in treatment during the length of supervision.

There was a significant reduction in revocations filed in 2020 with the implementation of sanctions and incentives matrix. In 2019, there were 905 revocations filed and in 20/21, there were 363. Probation continued to offer services during the COVID-19 pandemic.

Post Release Community Supervision/Mandatory Supervision Deputy Probation Officer Activities 2020/2021

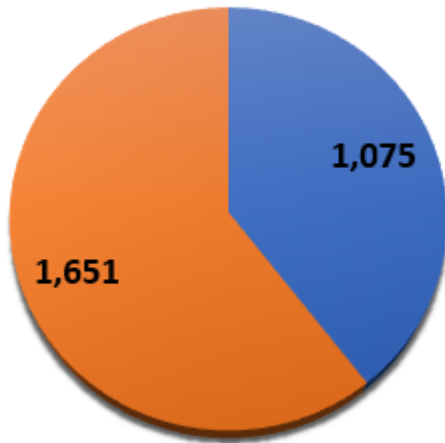
*Estimate based on 7/1/20 - 6/30/21 data



SANCTIONS AND INCENTIVE MATRIX



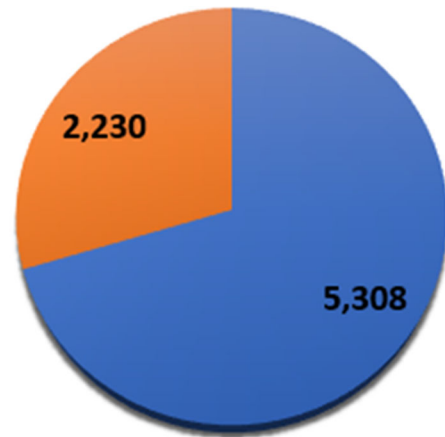
**Incentives and Sanctions
2019**



■ Incentives ■ Sanctions



**Incentives and Sanctions
2020/2021**



■ Incentives ■ Sanctions

Deputy Probation Officers utilize a response matrix to enhance community safety and promote behavior change. PRCS and Mandatory Supervision clients in violation of conditions of supervision continue to be subject to up to 10 days in custody as an alternative to long-term sentences when technical violations are less-serious. In addition to usage of flash incarceration, officers are utilizing options such as GPS monitoring and community service referrals. Incentives consist of verbal affirmations, gift cards, refreshments during appointment, delivery of meals and gifts for those clients who are in need during the holidays.

Programs and Services

2011 Public Safety Realignment Background

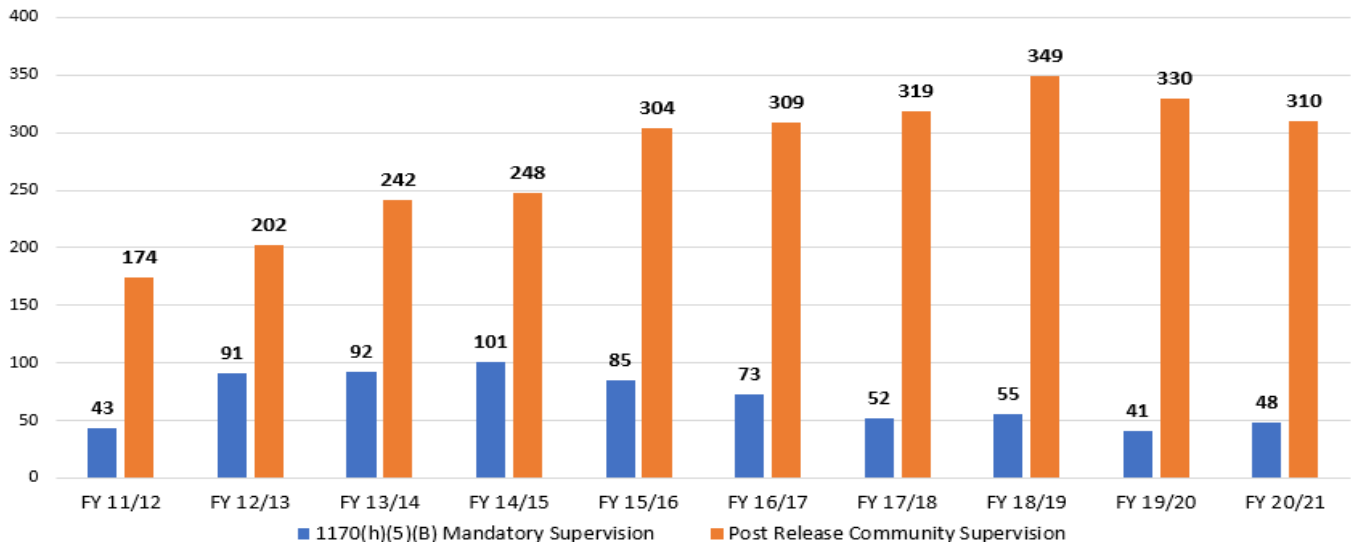
Post Release Community Supervision—Section 3451 of the California Penal Code

- ◆ This form of supervision is provided to offenders released from the California Department of Corrections and Rehabilitation (CDCR) to the jurisdiction of a county agency, pursuant to the Post Release Community Supervision Act of 2011. In all 58 counties, the Probation Department is the designated agency responsible for post-release supervision. CDCR must notify counties of an individual’s impending release one month prior, if possible. Once an individual has been released on PRCS, CDCR no longer has any jurisdiction, requiring all revocations with commitment time to be served in local county jails.

Mandatory Supervision — Section 1170 (h) (5) (B) of the California Penal Code

- ◆ This felony sentencing law is intended to reduce the California state prison population by allowing non-violent, non-serious and non-sex offenders convicted of certain felony crimes to serve their sentences in local county jail, rather than state prison. Unless the Court finds, in the interest of justice, that it is not appropriate, the Court shall suspend a portion of the sentence for a period selected at its discretion. The portion of the sentence that is suspended is known as mandatory supervision. During the period of mandatory supervision, the offender shall be supervised by the Probation Officer in accordance with the terms, conditions, and procedures generally applicable to persons placed on probation.

**MERCED COUNTY PROBATION
1170(h)(5)(B) Mandatory Supervision
and
Post Release Community Supervision
*Estimate based on CPOC data**

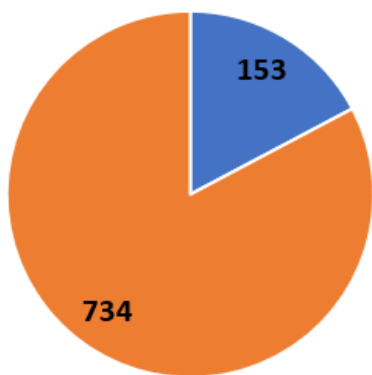


Pre-Trial Services Division



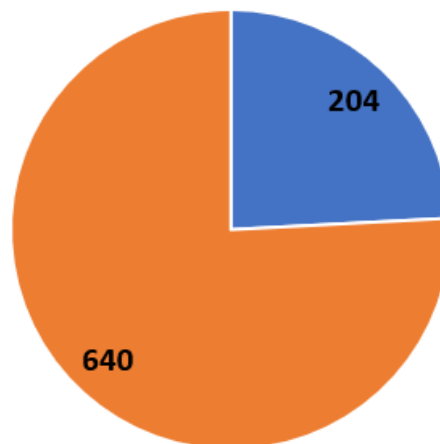
The Probation Department and Sheriff's Office have joined forces to provide pre-trial services since the inception of AB109. With Bail reform a strong topic in California, it is believed we can do more to better our pre-trial system in Merced County. We currently have three probation assistants to provide timely assessments to the Court. Behavioral Health and Recovery Services (BHRS) and Probation are partnering to develop a robust Pre-Trial Services program for individuals pending criminal proceedings who may suffer from a mental illness and/or co-occurring disorder. BHRS will provide one Mental Health Clinician and one Mental Health Worker to co-locate with Probation Pre-Trial staff. BHRS will focus on assessments, brief interventions, linkages, referrals and coordination of care for pre-trial individuals to reintegrate into the community upon release.

Bail Reviews Completed in 2019



■ Los Banos ■ Merced

Bail Reviews Completed in 2020/2021



■ Los Banos ■ Merced

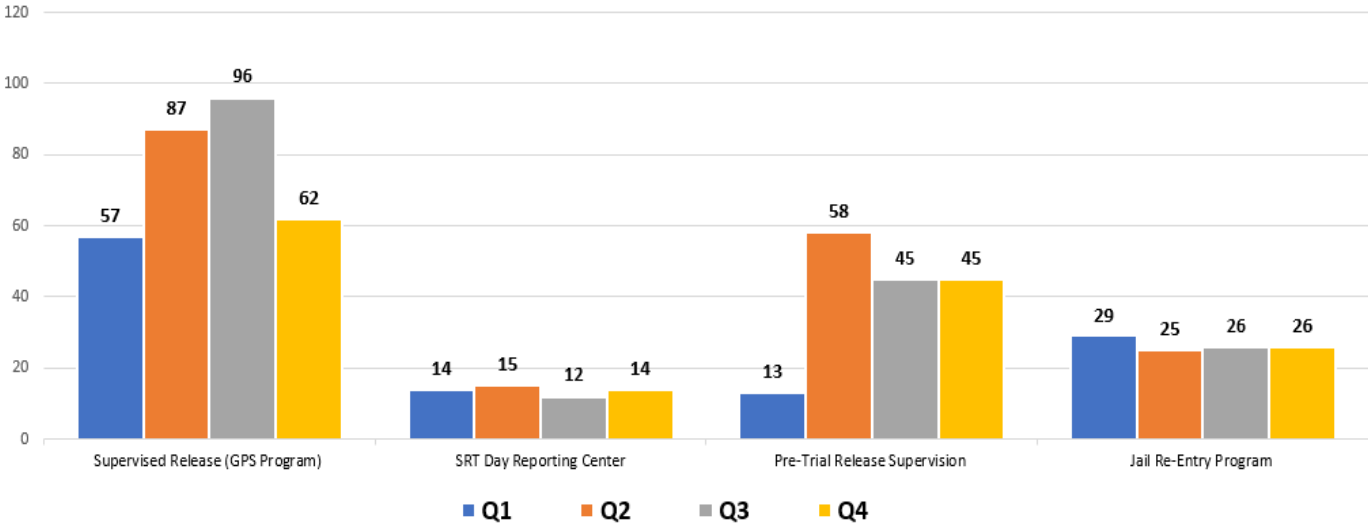
Merced County Sheriff's Department Alternatives to Incarceration Programs



The Merced County Sheriff's Department operates the Alternatives to Incarceration Program. Sheriff Deputies are assigned to supervise individuals who have been released to the community, in lieu of Incarceration, at various stages of the judicial process, from Pre-Trial to the Sentencing Phase.

Alternatives to Incarceration

Estimate based on 7/1/20 - 6/30/21 data
(average for each quarter)



JAIL RE-ENTRY PROGRAM



GEO Reentry Services offers in-custody treatment programs for our clients nearing the end of their jail commitments. Starting treatment before clients are released back into the community facilitates consistency in treatment and helps them be better prepared for their transition to the community. By assessing client risks and needs and initiating programming during incarceration, the transition to a community-based program is seamless and behavior change is expedited. To assist in this transition, the Probation Department has a re-entry Deputy Probation Officer stationed at the John Latorraca Correctional Facility (JLCF). The re-entry officer works with our clients, GEO Reentry Services and Merced County Sheriff's Department to ensure our clients are referred to the appropriate services upon their release.



Total Cost: \$456,151

Programs and Services

LEADERSHIP FOR LIFE



The Leadership for Life Program was developed by the Merced County Human Services Agency and is facilitated by employees of the Probation Department who were once system involved. Facilitators provide an array of one-stop-shop services such as:

- ◆ Life Skills
- ◆ Cognitive Behavior Therapy
- ◆ Education and Career Assessments
- ◆ Referrals to Homeless Assistance
- ◆ Section 8 Housing Assistance
- ◆ General Relief/Food Stamps
- ◆ Parenting Skills
- ◆ Assistance with Obtaining Driver's Licenses
- ◆ Post Graduate Mentorship, as needed

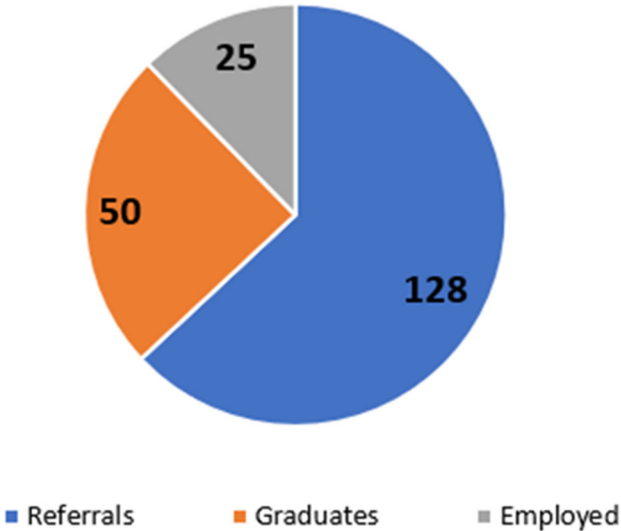


Programs and Services

LEADERSHIP FOR LIFE

Last Fiscal Year, a total of 128 clients were referred to the Leadership for Life Program. Of those clients, 50 graduated. Of the 25 graduates, 50% of the clients gained employment during program or post graduation. For the 2020 calendar year, a total of three cohorts were completed. Numbers decreased due to the pandemic and per capacity restrictions, only 6 clients were allowed to attend per cohort.

Leadership for Life
FY 2020/2021



Total Cost: \$128,822

Programs and Services

Day Reporting Center (DRC)

GEO Reentry Services continues to serve clients with intensive rehabilitative treatment, educational services, and cognitive behavioral therapy. The Day Reporting Center in Merced now offers the Batterers Intervention Program (BIP) for clients that are court ordered to completed BIP. The Day Reporting Center in Los Banos was closed on April 30, 2021. During July 1, 2020 to June 30, 2021, Los Banos had a total of 19 enrolled clients and Merced had reported 229 clients enrolled in the Day Reporting Centers.



- ◆ Assessments
- ◆ Behavior Change Plans
- ◆ Case Management
- ◆ Cognitive Behavioral Therapy
- ◆ Moral Reconciliation Therapy
- ◆ Outpatient Substance Abuse Education
- ◆ Outpatient Substance Abuse Treatment
- ◆ Anger Management
- ◆ Parenting Classes
- ◆ Trauma Informed Services
- ◆ Employment Readiness
- ◆ Batterers Intervention Classes
- ◆ Relapse Prevention
- ◆ Aftercare
- ◆ Breathalyzers
- ◆ Random Drug Testing

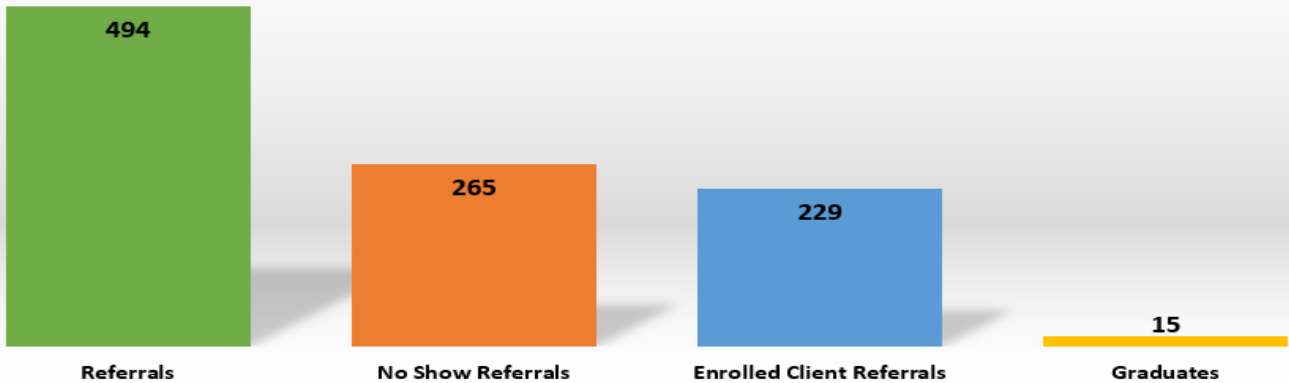


Programs and Services

Day Reporting Center

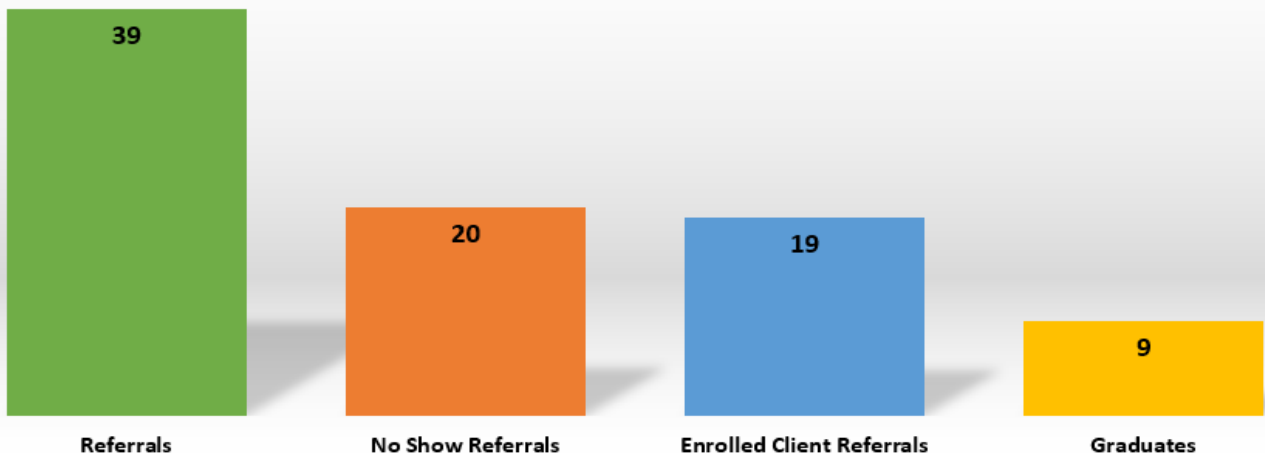
Merced / Los Banos

Day Reporting Center- Merced in 2020/2021



GEO Reentry Services continues to serve clients with intensive rehabilitative treatment, educational services, and cognitive behavioral therapy. The Day Reporting Center in Merced now offers the Batterers Intervention Program (BIP) for clients that are court ordered to completed BIP. The Day Reporting Center in Los Banos was closed on May 1, 2021. During July 1, 2020 to April 30, 2021, Los Banos had a total of 19 enrolled clients and Merced had reported 229 clients enrolled in the Day Reporting Centers.

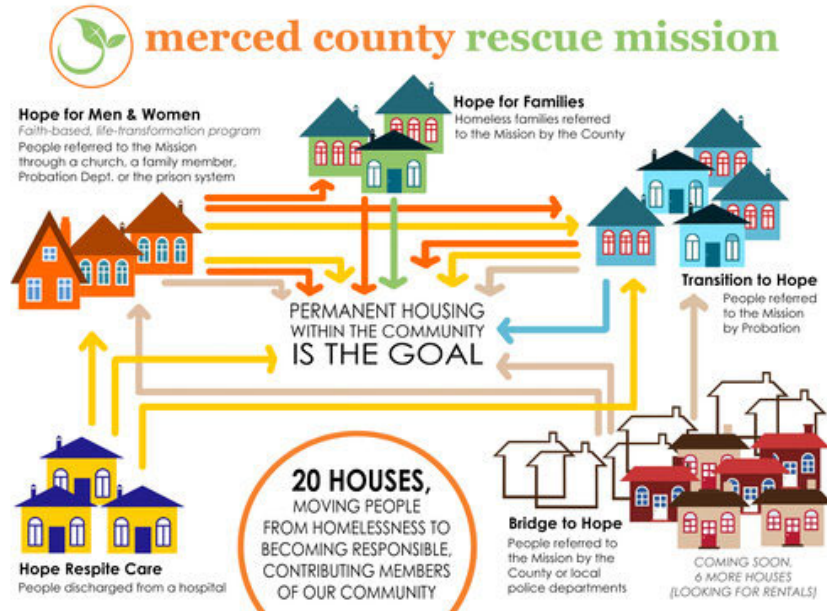
Day Reporting Center- Los Banos in 2020/2021



Total Cost: \$811,000

Programs and Services

Transitional Housing



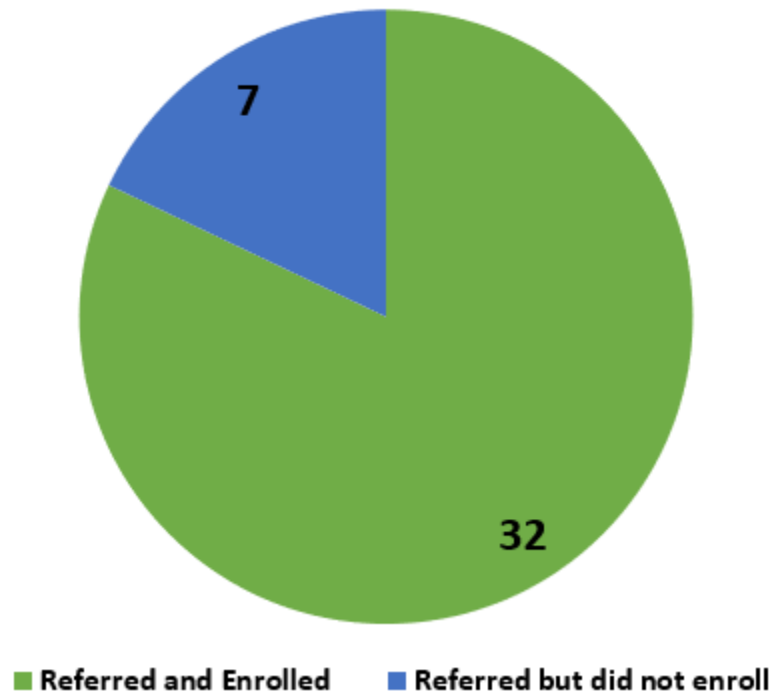
The Transition to Hope Program, operated by Merced Rescue Mission, provides our clients with a safe, supportive, sober living environment while fostering independence, allowing each resident to pursue work and educational opportunities.



Programs and Services

Transitional Housing

Transitional Housing in 2020/2021



- Approximately 78% referred are enrolled in program
- MRC provides eight (8) sober living environment beds per fiscal year equating to 2,920 bed days
- In 2020/2021, a total of 2,579 beds were used

Total Cost: \$100,000

Programs and Services

THE PHOENIX PROJECT

MERCED COUNTY OFFICE OF EDUCATION

Roy



Phoenix Project



Roy was referred to the Phoenix Project in August 2020. Roy has been homeless in Merced for the last 18 years. He was receiving services from Merced Rescue Mission when he heard about Phoenix Project. He was referred and completed everything that he needed to complete in order to start the Professional Truck Driver training at Advanced Career Institute. He returned to the DMV and obtained his California driver license after 18 years of not driving. Roy started training in December but due to DMV shutdown, he was able to take advantage of the extra training at ACI.

Roy tested on 3/10/2021 and obtained his Class A. He is currently working for Central Valley Trucking as of 3/15/2021.

The Phoenix Project provides clients with vocational and aptitude assessments, personalized career action plans, assistance with GED/High School Diplomas, vocational training, college enrollment—including financial aid, one-on-one mentoring, and other supportive services.

Vocational Services Include:

- ◆ Professional Truck Driver
- ◆ Welding Technology
- ◆ Industrial Maintenance Mechanic
- ◆ Automotive Technology
- ◆ Electrical or Programmable Logic Controllers
- ◆ Medical Assisting
- ◆ Computerized Technology
- ◆ Medical Office Administration
- ◆ Accounting
- ◆ Construction Technology
- ◆ Certified Drug and Alcohol Counselor



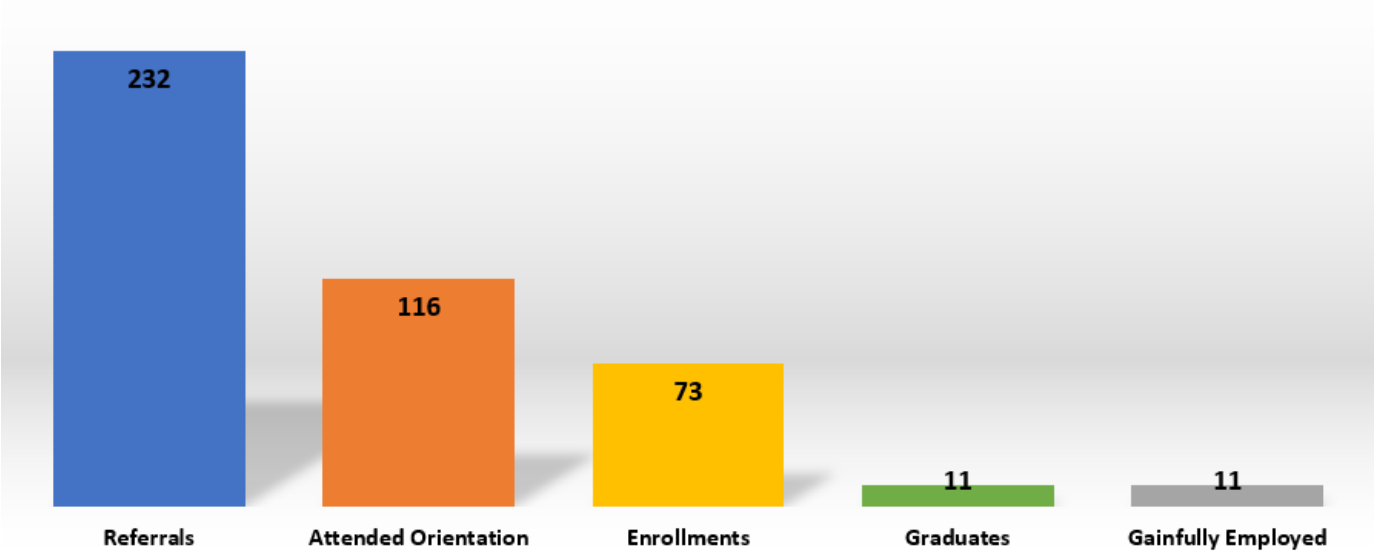
Phoenix Project

Programs and Services

THE PHOENIX PROJECT

MERCED COUNTY OFFICE OF EDUCATION

The Phoenix Project in 2020/2021



Similar to the reduction in contract cost for the Day Reporting Center through the Geo Group, MCOE’s contract was reduced by \$92,874 resulting in a total contract price of \$250,000 in FY 20/21. It is requested that services will increase in FY 21/22, however the Executive Committee of the Community Corrections Partnership voted to keep the amount the same as previous fiscal year due to the low number of graduates in FY 20/21.

Total Cost: \$250,000

Programs and Services

K-9 PROGRAM

SAGE



K-9 Sage and her partner/handler, Deputy Probation Officer Christina Zwart, are housed at the Trident Center. Sage is primarily utilized for the purpose of detecting narcotics and firearms. In addition to being utilized for probation compliance searches and searches in the juvenile hall, Sage and DPO Zwart also assist local law enforcement agencies with service of search warrants. Sage and DPO Zwart participate in community events for outreach purposes.

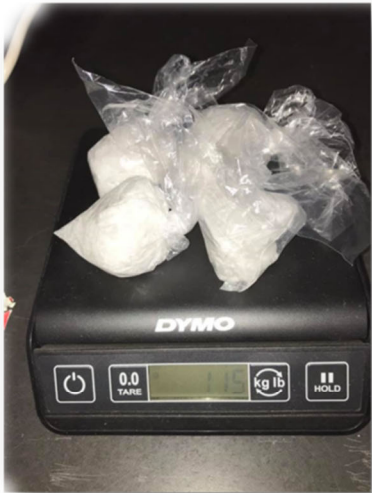
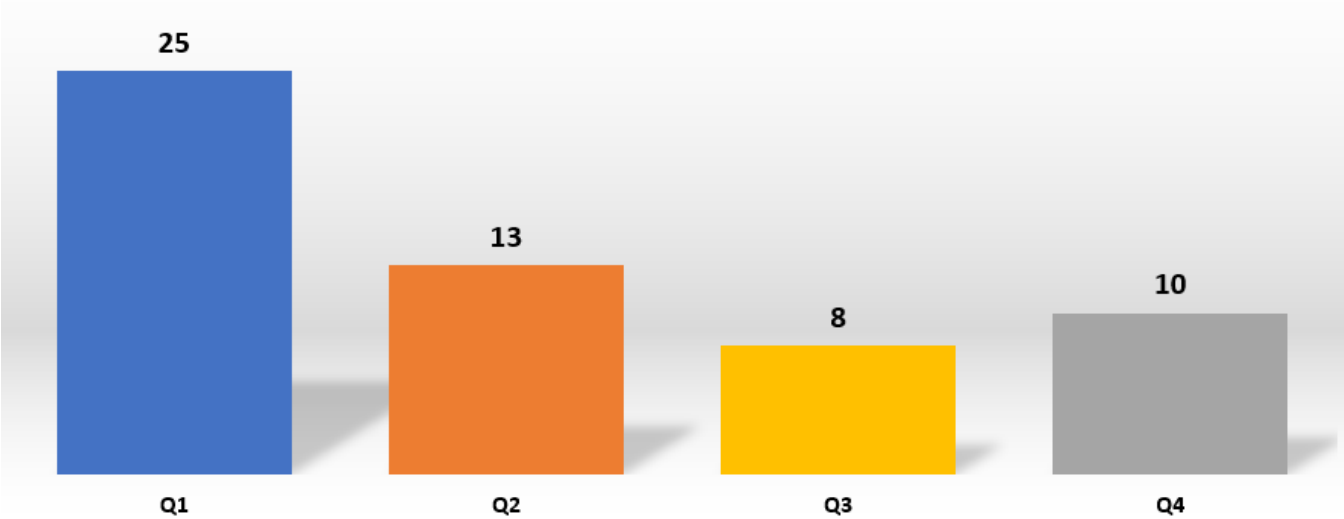


Programs and Services

K-9 PROGRAM

SAGE

K9 Searches in 2020/2021



Total Cost: \$169,218 (Handler, OT, Supplies)

Programs and Services

ACE OVERCOMERS



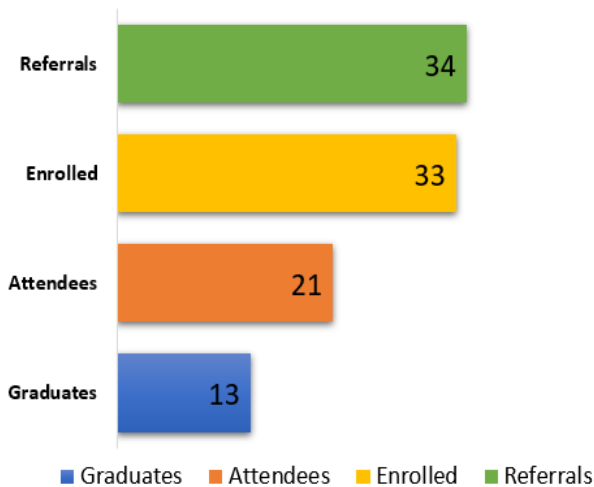
Ace (Adverse Childhood Experiences) Overcomers provides clients with a 12-week faith based curriculum designed to provide life changing lessons to help overcome addiction, depression, anxiety, and anger that is caused by stressors associated with childhood adversity and trauma.

Programs and Services

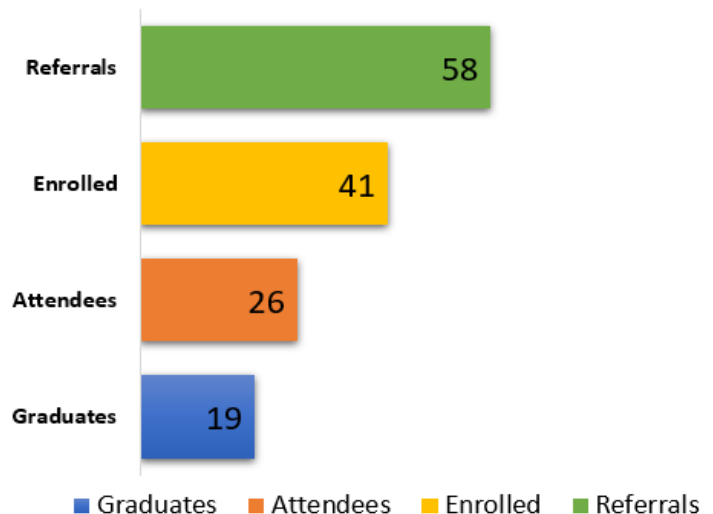
ACE OVERCOMERS

ACE Overcomers adjusted to client's need during the pandemic and provided classes through ZOOM. During July 1, 2020 to June 30, 2021, ACE Overcomers had a total of 39 enrolled clients with 19 graduates. This was a 32% increase in graduates from 2019.

ACE Overcomers in 2019



ACE Overcomers in 2020/2021



Total Cost: \$57,000

Programs and Services

LIFELINE COMMUNITY DEVELOPMENT



Lifeline Community Development is a community-based organization that provides resources and empowerment to underserved communities within Merced County. In addition, Lifeline organizes and hosts the monthly PACT (Probation/Parole and the Community Team) meetings to assist our clients who are re-entering our community after a period of incarceration. Meetings are primarily focused on providing clients with support by advising them of available resources within the community.



Programs and Services

LIFELINE COMMUNITY DEVELOPMENT

LifeLine Community Development Corporation Community Resources in 2020/2021



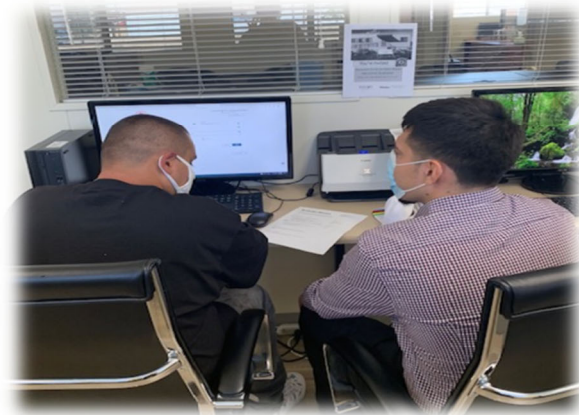
Services provided in the Loughborough and Winton communities included food drives, neighborhood beautification and community projects. PACT meetings in July 2020, August 2020, December 2020 and January 2021 had to be cancelled due to the pandemic. Starting July 2021, clients that live on the westside of the county will be able to attend the PACT meetings in Los Banos. A contract increase from \$4,500 for FY 20/21 to \$10,000 for FY 21/22 was approved by the Executive Community Corrections Partnership Committee.



Total Cost: \$10,000

Programs and Services

BREAKING BARRIERS

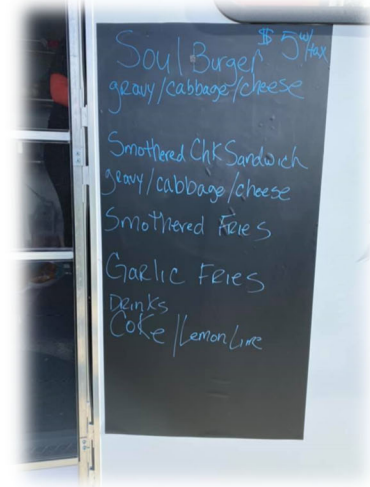


The Los Banos area has historically had a lack of community-based organizations, programs and other services to assist Probation clients in obtaining services. Because of this, Breaking Barriers was created. Not only is it a one-stop shop for job readiness services and Leadership for Life programming, Behavioral Health and Recovery Services (BHRS) has partnered with Probation to house a Mental Health Clinician, Mental Health Worker and a Peer Support Specialist that will identify individual needs, recovery goals, and barriers to accessing care. Substance use disorder and mental health counseling services will be offered in person and via tele-health. Also, the family unit as a whole will be addressed as any family member of the Probation client will be offered the same services.

Total Cost: \$473,822

Programs and Services

SYMPLE EQUAZION/SYMPLE SOUL



Symple Equazion is a local non-profit that will provide employability skills training to eligible AB109 clients. The purpose for this partnership is to assist those who suffer from barriers that exist from being system involved. The program will serve up to twelve clients divided into two cohorts. The clients will receive eighty hours (80) of class training, obtain their food handler's certificate and acquire three hundred twenty (320) hours of on the job work experience for a total of four hundred (400) hours of paid training facilitated by Symple Equazion in the Symple Soul food truck. By providing this program to AB109 clients, it will reduce recidivism and assist clients in obtaining educational/vocational skills in the culinary arts with hopes of obtaining permanent employment in the food industry.

Total Cost: \$135,902

Programs and Services

FY 2021/2022 CCP Proposed Budget

AB 109 Operational Allocation

Department/Agency	2019/20 Approved	2020/21 Approved	2021/22 Proposed	2021/22 Requested	2021/22 Final
<u>Sheriff</u>					
Operations	\$ 1,440,754	\$ 1,476,077	\$ 1,537,385	\$ 166,838	\$ 1,704,223
Corrections	\$ 1,765,718	\$ 1,810,568	\$ 1,822,870	\$ -	\$ 1,822,870
Total Sheriff	\$ 3,206,472	\$ 3,286,645	\$ 3,360,255	\$ 166,838	\$ 3,527,093
<u>Probation</u>					
Post-Release Supervision	\$ 3,240,508	\$ 3,315,681	\$ 3,341,777	\$ 139,163	\$ 3,480,940
AB 109 Data Collection	\$ 127,658	\$ 134,872	\$ 153,874	\$ -	\$ 153,874
Fixed Asset (Vehicles)	\$ 125,000	\$ -	\$ 60,000	\$ -	\$ 60,000
Fixed Asset (Metrasens)	\$ -	\$ -	\$ -	\$ -	\$ -
Services & Supplies	\$ 410,422	\$ 412,475	\$ 392,179	\$ -	\$ 392,179
BI-Day Reporting Center	\$ 849,000	\$ 696,000	\$ 621,000	\$ -	\$ 621,000
BI-GPS	\$ 175,000	\$ 150,000	\$ 150,000	\$ -	\$ 150,000
BI-Jail Re-Entry	\$ 456,151	\$ 456,151	\$ 456,151	\$ -	\$ 456,151
Symple Equazion	\$ -	\$ -	\$ -	\$ 157,444	\$ 135,902
Jail Utilization Review	\$ 79,936	\$ 79,936	\$ -	\$ -	\$ -
Ace Overcomers	\$ 57,000	\$ 57,000	\$ 57,000	\$ -	\$ 57,000
Lifeline CDC	\$ 4,500	\$ 4,500	\$ 4,700	\$ 5,500	\$ 10,000
CSMA	\$ 60,000	\$ -	\$ -	\$ -	\$ -
MCOE - Phoenix Project	\$ 342,874	\$ 250,000	\$ 250,000	\$ 92,874	\$ 250,000
MCRM-Rescue Mission	\$ 100,000	\$ 100,000	\$ 100,000	\$ -	\$ 100,000
Total Probation	\$ 6,370,923	\$ 5,656,615	\$ 5,586,681	\$ 394,981	\$ 5,867,046
<u>District Attorney</u>					
Victim Witness Advocate	\$ 96,913	\$ 88,703	\$ 95,610	\$ -	\$ 95,610
Deputy District Attorney	\$ 158,565	\$ 221,412	\$ 230,540	\$ -	\$ 230,540
Investigative Assistant	\$ 108,227	\$ 113,047	\$ 111,215	\$ -	\$ 111,215
Total DA	\$ 363,705	\$ 423,162	\$ 437,365	\$ -	\$ 437,365
<u>Behavioral Health</u>					
Jail Clinician	\$ 153,255	\$ 140,259	\$ 150,902	\$ -	\$ 150,902
<u>Public Defender</u>					
Deputy Public Defender	\$ 197,672	\$ 246,125	\$ 257,400	\$ -	\$ 257,400
<u>Dept. of Public Works</u>					
Los Banos Modular Remodel	\$ 125,000	\$ -	\$ -	\$ -	\$ -
Pre-Trial Services Remodel	\$ 304,652	\$ -	\$ -	\$ -	\$ -
Total DPW	\$ 429,652	\$ -	\$ -	\$ -	\$ -
Total	\$ 10,721,679	\$ 9,752,806	\$ 9,792,603	\$ 561,819	\$ 10,239,806
				State Allocation	\$ 10,648,789
				Growth	\$ 861,138
				Total FY 21/22	\$ 11,509,927

Recommendations of the Executive Committee

Fiscal Year 2021/22

Probation and the Sheriff's Office have continued to provide pre-trial services to the Merced County community since 2016. In FY 2018/19, the office formerly known as "Courtroom 11" was repurposed to allow for a designated pre-trial office. The intent was to create space for Probation and the Sheriff's Office to partner for a dedicated pre-trial program. Two additional Probation Assistants were added to perform bail reviews to ensure timely review by the Court. Beginning in August, Behavioral Health and Recovery Services will be added to the team to provide clinical and linkage services to pre-trial clients. Due to the increase in services and clients, it is requested that a Deputy Sheriff/Coroner and Deputy Probation Officer be added. It is Probation's desire for all to be housed at the pre-trial services office; however, that is still under discussion.

In addition to pre-trial services, a new program is requested for the AB 109 population. Symple Equazion, a local non-profit, is dedicated to fostering healthy communities through personal development, restoring safe homes, schools, streets and workplaces. Probation requests to partner with Symple Equazion to allow clients the opportunity to obtain vocational and educational services by working in the Symple Soul food truck.

Also, an increase in the Lifeline CDC contract for FY 21/22 is requested in order to provide PACT meetings in Los Banos.

Overall requests include:

Deputy Sheriff/Coroner:	\$166,838
Deputy Probation Officer:	\$139,163
Symple Equazion	\$135,902
Lifeline CDC:	\$5,500 (total contract \$10,000)
MCOE-Phoenix Project:	\$92,874 (total contract \$342,874)
TOTAL:	\$540,277

The Executive Committee of the Community Corrections Partnership approved the above recommendations with the exception of Merced County Office of Education's , Phoenix Project.