

JAIL PROFILE SURVEY

2006, 2nd QUARTER SURVEY RESULTS

FACILITIES STANDARDS AND OPERATIONS DIVISION

CORRECTONS STANDARDS AUTHORITY

STATE OF CALIFORNIA
600 Bercut Drive
Sacramento, CA 95814-0185
(916) 445-5073
www.csa.ca.gov

JAIL PROFILE SURVEY

EXPLANATION OF RESULTS

The following link titles contain the Jail Profile Survey results for the second quarter of 2006. Quarterly Totals contains the second quarter totals based upon the monthly and quarterly data submitted to us by the participating jurisdictions. The next six (6) link titles show the trend data for variables we have been tracking for the last ten years (Average Number of Persons Booked, Average Length of Stay, Average Daily Population, Percentage Non-Sentenced, Non-Sentenced ADP, and Sentenced ADP). The remainder of this page provides explanations and clarifications of the data presented.

Quarterly Totals link

- Unless otherwise noted, “projected totals” are based upon the average per day for the variable in question. For example, there was an average of 80,714 inmates per day in local jails (excluding Type I’s) during the three-month span of April thru June 2006.
- For some variables (other than ADP), we did not receive complete data from all jurisdictions. In such instances, we used statistical procedures to estimate the statewide total.
- The number for “Bookings” is the average of the monthly totals for April, May, and June.
- For the following variables, the numbers presented are the totals as of the mid-quarter (i.e., May 15, 2006); Pretrial Release, Early Release, 2 and 3 Strikes, Felony Warrants, Misdemeanor Warrants, Juveniles in Custody and Undocumented Aliens.
- “Assaults” is the total number of serious inmate assaults on staff (resulting in a crime report), statewide, during the second quarter of 2006.

Average Number of Persons Booked, Average Length of Stay, Average Daily Population, Percentage Non-Sentenced, Non-Sentenced ADP, and Sentenced ADP links

- The data in the 10-Year Summary tables are based upon survey data which the Corrections Standards Authority has gathered since the early 1980’s.
- Prior to 1995, yearly averages were reported to the CSA on an annual basis. Yearly averages from 1996 to the present time have been the average of the 12 calendar months. In 1995, the yearly figure reported is the fourth quarter average, since we do not have data from the first three quarters.

CORRECTIONS STANDARDS AUTHORITY JAIL PROFILE SURVEY

Reporting Period: April to June, 2006

County Jail Populations

ADP ^a	80,714 ^b
Holding Areas	1,901
Average "Under the Roof" ^c	82,615 ^d
Highest One Day Count	86,526 ^e

Special Use Beds

Medical Beds	1,030
Mental Health Beds	3,131

County Jail Populations

Felony	64,013
Misdemeanor	16,701
Total	80,714
Non-Sentenced Males	47,370
Non-Sentenced Females	6,663
Sentenced Males	22,519
Sentenced Females	4,162
Total	80,714
Maximum Security Inmates	24,184
Medium Security Inmates	38,335
Minimum Security Inmates	18,195
Total	80,714

Released Per Month Due to Lack of Space

Pretrial Release	8,942 ^f
Early Release	9,357 ^f
Total	18,299

Inmates with 2 and 3 Strikes

2 Strike Inmates	3,260 ^g
3 Strike Inmates	1,217 ^g
Total	4,477

Unservd Warrants

Felony Warrants	288,365 ^g
Misdemeanor Warrants	2,237,165 ^g
Total	2,525,530

Inmates From Other Jurisdictions

Housed on Federal Contract	3,566
Housed on Contract with CDC	2,276
From Other Counties on Contract	143
Awaiting Transport	2,133
Total	8,118

Other Jail Profile Survey Variables

Bookings Per Month	106,435 ^f
Juveniles in Custody	48 ^f
Criminal / Illegal Aliens	8,665
Assaults On Staff	320

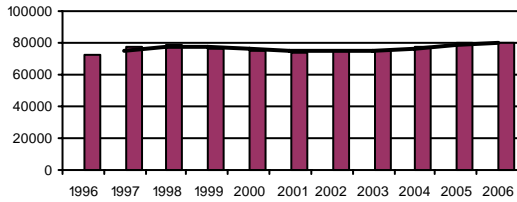
- a. The Average Daily Population for all jurisdictions (excluding Type I's) does not include inmates in holding areas.
- b. Unless otherwise indicated, the numbers reported are the average across the days in the quarter.
- c. "Under the Roof" is the sum of the Average Daily Population plus the average daily number of inmates in Holding Areas.
- d. Totals may not be the exact sum of the subtotals due to rounding.
- e. The sum of all Highest One Day inmate population counts from all jurisdictions.
- f. These data are collected on a monthly basis, this figure is an average of the total numbers collected each month during this quarter.
- g. These data are one-day snapshots collected at the end of the quarter.

Jail Profile Survey

2006

Average Daily Population

10 Year Summary									
1996	1997	1998	1999	2000	2001	2002	2003	2004	2005
72,007	76,938	79,143	76,311	75,044	73,824	75,156	75,340	76,939	79,638



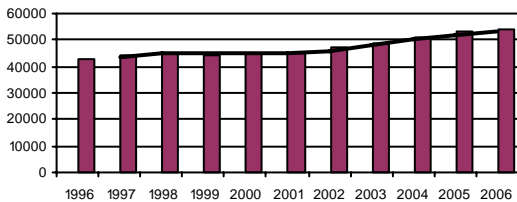
This is the fourth consecutive quarter in which the average daily population (ADP) is greater than 80,000 inmates. This upward trend is consistent with that which has been occurring since 2001.

Quarterly Results

	Q1	Q2	Q3	Q4	Average
2005	77,357	79,222	81,200	80,720	79,638
2006	80,167	80,714			80,442

Non-sentenced ADP

10 Year Summary									
1996	1997	1998	1999	2000	2001	2002	2003	2004	2005
42,539	44,593	45,303	44,509	44,940	45,187	46,975	49,105	50,677	53,185



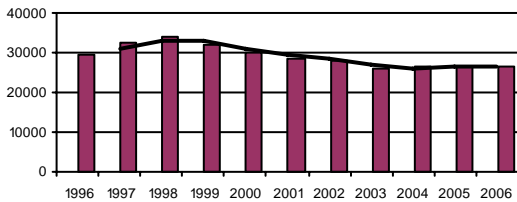
The average non-sentenced inmate population increased in proportion to the increase in ADP.

Quarterly Results

	Q1	Q2	Q3	Q4	Average
2005	52,128	52,807	53,958	53,820	53,185
2006	53,638	54,032			53,836

Sentenced ADP

10 Year Summary									
1996	1997	1998	1999	2000	2001	2002	2003	2004	2005
29,468	32,347	33,841	31,802	30,109	28,637	28,180	26,235	26,262	26,453



The sentenced inmate population number is consistent with the ADP and non-sentenced averages.

Quarterly Results

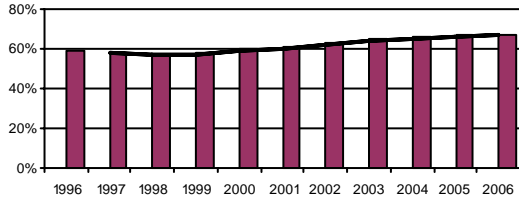
	Q1	Q2	Q3	Q4	Average
2005	25,229	26,415	27,241	26,901	26,453
2006	26,528	26,682			26,605

Jail Profile Survey

2006

Percentage Non-sentenced

10 Year Summary									
1996	1997	1998	1999	2000	2001	2002	2003	2004	2005
59%	58%	57%	58%	60%	61%	63%	65%	66%	67%



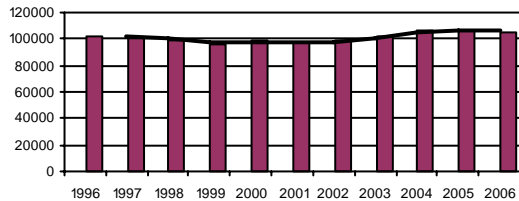
The percentage of non-sentenced inmates remains stable at 67%.

Quarterly Results

	Q1	Q2	Q3	Q4	Average
2005	67%	67%	66%	67%	67%
2006	67%	67%			67%

Average Number of Persons Booked Per Month

10 Year Summary									
1996	1997	1998	1999	2000	2001	2002	2003	2004	2005
101,767	101,210	99,229	96,684	98,486	97,089	98,625	102,217	106,605	106,940



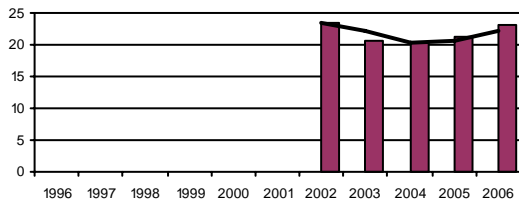
The average number of monthly bookings is up from the first quarter but remains below the 2005 average and is well below the number posted during the same quarter last year.

Quarterly Results

	Q1	Q2	Q3	Q4	Average
2005	105,447	109,741	109,349	103,221	106,940
2006	103,869	106,435			105,159

Average Length Of Stay

10 Year Summary									
1996	1997	1998	1999	2000	2001	2002	2003	2004	2005
						23.6	20.5	20.2	21.3



The average length of stay was almost unchanged from last quarter.

Quarterly Results

	Q1	Q2	Q3	Q4	Average
2005	24.7	22.3	18.7	19.7	21.3
2006	23.2	23.1			23.1

Average Daily Population

Non-sentenced / Sentenced Male / Female

California County Jails - For Months Of April - June 2006

	Non-sentenced						Sentenced						Total
	Male		Female		Total		Male		Female		Total		
	#	%	#	%	#	%	#	%	#	%	#	%	
1 . Alameda Sheriff's Dept.	2,807	91%	280	9%	3,088	77%	781	87%	120	13%	901	23%	3,988
2 . Amador Sheriff's Dept.	43	80%	11	20%	54	59%	27	73%	10	27%	37	41%	91
3 . Butte Sheriff's Dept.	231	83%	46	17%	276	56%	179	81%	42	19%	221	44%	497
4 . Calaveras Sheriff's Dept.	44	83%	9	17%	53	67%	23	90%	3	10%	26	33%	79
5 . Colusa Sheriff's Dept.	24	89%	3	11%	27	64%	11	75%	4	25%	15	36%	42
6 . Contra Costa Sheriff's Dept.	883	86%	147	14%	1,030	63%	553	91%	56	9%	609	37%	1,640
7 . Del Norte Sheriff's Dept.	62	85%	11	15%	73	55%	46	79%	12	21%	58	45%	131
8 . El Dorado Sheriff's Dept.	174	90%	20	10%	193	53%	144	85%	25	15%	169	47%	362
9 . Fresno Sheriff's Dept.	2,166	89%	273	11%	2,439	76%	664	84%	126	16%	790	24%	3,228
10 . Glenn Sheriff's Dept.	67	85%	12	15%	78	69%	25	72%	10	28%	35	31%	114
11 . Humboldt Sheriff's Dept.	197	88%	26	12%	223	60%	121	83%	25	17%	146	40%	369
12 . Imperial Sheriff's Dept.	261	87%	40	13%	300	55%	229	92%	19	8%	248	45%	548
13 . Inyo Sheriff's Dept.	30	80%	7	20%	37	40%	43	77%	13	23%	56	60%	93
14 . Kern Sheriff's Dept.	1,467	88%	199	12%	1,667	73%	479	77%	142	23%	621	27%	2,288
15 . Kings Sheriff's Dept.	132	88%	18	12%	150	50%	121	81%	28	19%	149	50%	299
16 . Lake Sheriff's Dept.	146	80%	37	20%	182	61%	90	77%	27	23%	117	39%	299
17 . Lassen Sheriff's Dept.	45	85%	8	15%	53	55%	36	83%	7	17%	43	45%	96
18 . Los Angeles Sheriff's Dept.	11,417	88%	1,555	12%	12,972	73%	4,076	87%	632	13%	4,709	27%	17,681
19 . Madera Corrections Dept.	246	88%	32	12%	278	72%	102	94%	7	6%	109	28%	387
20 . Marin Sheriff's Dept.	231	87%	33	13%	264	81%	53	87%	8	13%	61	19%	325
21 . Mariposa Sheriff's Dept.	24	85%	4	15%	29	53%	22	86%	4	14%	26	47%	54
22 . Mendocino Sheriff's Dept.	155	89%	20	11%	175	65%	76	80%	19	20%	95	35%	270
23 . Merced Sheriff's Dept.	492	89%	59	11%	551	72%	182	87%	27	13%	209	28%	760
24 . Modoc Sheriff's Dept.	14	82%	3	18%	17	55%	11	81%	3	19%	14	45%	31
25 . Mono Sheriff's Dept.	13	93%	1	7%	14	47%	13	87%	2	13%	15	53%	29
26 . Monterey Sheriff's Dept.	745	89%	96	11%	841	70%	307	84%	59	16%	365	30%	1,206
27 . Napa Corrections Dept.	110	90%	13	10%	123	52%	102	91%	10	9%	113	48%	236
28 . Nevada Sheriff's Dept.	84	86%	14	14%	98	56%	58	75%	20	25%	77	44%	175
29 . Orange Sheriff's Dept.	2,639	88%	351	12%	2,990	48%	2,698	84%	513	16%	3,211	52%	6,201
30 . Placer Sheriff's Dept.	326	88%	46	12%	373	63%	179	83%	36	17%	215	37%	588
31 . Plumas Sheriff's Dept.	21	82%	5	18%	26	45%	23	74%	8	26%	31	55%	57
32 . Riverside Sheriff's Dept.	2,556	89%	308	11%	2,864	85%	421	85%	72	15%	493	15%	3,357
33 . Sacramento Sheriff's Dept.	2,165	88%	290	12%	2,455	59%	1,434	84%	276	16%	1,709	41%	4,165
34 . San Benito Sheriff's Dept.	49	91%	5	9%	54	46%	52	82%	11	18%	64	54%	117
35 . San Bernardino Sheriff's Dept.	3,557	87%	513	13%	4,070	75%	1,113	81%	259	19%	1,372	25%	5,442

Average Daily Population

Non-sentenced / Sentenced Male / Female

California County Jails - For Months Of April - June 2006

	<u>Jurisdiction</u>	Non-sentenced						Sentenced						Total
		Male		Female		Total		Male		Female		Total		
		#	%	#	%	#	%	#	%	#	%	#	%	
36 .	San Diego Sheriff's Dept.	2,734	85%	487	15%	3,222	63%	1,563	82%	341	18%	1,904	37%	5,125
37 .	San Diego Work Furlough	0	0%	0	0%	0	0%	167	82%	37	18%	204	100%	204
38 .	San Francisco Sheriff's Dept.	1,275	88%	166	12%	1,441	79%	324	85%	55	15%	379	21%	1,820
39 .	San Joaquin Sheriff's Dept.	722	85%	128	15%	851	59%	482	83%	102	17%	584	41%	1,435
40 .	San Luis Obispo Sheriff's Dept	202	84%	37	16%	239	46%	239	83%	47	17%	286	54%	525
41 .	San Mateo Sheriff's Dept.	496	86%	80	14%	576	52%	453	87%	69	13%	522	48%	1,098
42 .	Santa Ana Police Dept.	339	92%	28	8%	367	95%	15	85%	3	15%	17	5%	384
43 .	Santa Barbara Sheriff's Dept.	528	84%	97	16%	625	64%	302	84%	56	16%	357	36%	983
44 .	Santa Clara Corrections Dept.	2,525	87%	362	13%	2,887	65%	1,314	86%	214	14%	1,528	35%	4,415
45 .	Santa Clara Probation Dept.	0	0%	0	0%	0	0%	142	74%	51	26%	192	100%	192
46 .	Santa Cruz Sheriff's Dept.	202	88%	28	12%	230	44%	255	88%	36	12%	291	56%	522
47 .	Shasta Sheriff's Dept.	230	85%	41	15%	271	73%	79	80%	20	20%	99	27%	370
48 .	Sierra Sheriff's Dept.	7	91%	1	9%	8	79%	2	100%	0	0%	2	21%	10
49 .	Siskiyou Sheriff's Dept.	76	94%	5	6%	81	83%	15	94%	1	6%	16	17%	98
50 .	Solano Sheriff's Dept.	706	84%	132	16%	838	77%	212	84%	39	16%	252	23%	1,090
51 .	Sonoma Sheriff's Dept.	586	89%	74	11%	660	58%	402	85%	72	15%	474	42%	1,134
52 .	Stanislaus Sheriff's Dept.	698	87%	101	13%	799	59%	438	80%	109	20%	546	41%	1,345
53 .	Sutter Sheriff's Dept.	152	87%	23	13%	176	65%	67	72%	26	28%	93	35%	269
54 .	Tehama Sheriff's Dept.	80	84%	15	16%	95	54%	65	82%	15	18%	80	46%	175
55 .	Trinity Sheriff's Dept.	16	71%	6	29%	22	45%	24	90%	3	10%	27	55%	49
56 .	Tulare Sheriff's Dept.	761	85%	130	15%	890	60%	558	92%	46	8%	604	40%	1,494
57 .	Tuolumne Sheriff's Dept.	88	83%	18	17%	106	72%	35	84%	7	16%	42	28%	148
58 .	Ventura Sheriff's Dept.	771	88%	107	12%	878	53%	636	83%	129	17%	765	47%	1,643
59 .	Ventura Work Furlough	0	0%	0	0%	0	0%	98	79%	26	21%	124	100%	124
60 .	Yolo Sheriff's Dept.	280	87%	42	13%	321	80%	68	83%	14	17%	83	20%	404
61 .	Yuba Sheriff's Dept.	274	82%	59	18%	333	81%	66	85%	12	15%	78	19%	411
Statewide		47,369	88%	6,663	12%	54,032	67%	22,519	84%	4,162	16%	26,682	33%	80,713

Jail Populations: Quarter 2, 2005 Versus Quarter 2, 2006

Jurisdiction	Qtr 2, 2005	Qtr 2, 2006	Qtr 2, 2006 Minus Qtr 2, 2005	Qtr 2, 2005 To Qtr 2, 2006 % +/-	% of Total Increase or Decrease	Cum %	Cum Total
Sacramento Sheriff's Dept.	3,576	4,165	589	16.5%	25.2%	25.18%	589
Los Angeles Sheriff's Dept.	17,354	17,681	327	1.9%	14.0%	39.16%	916
Fresno Sheriff's Dept.	3,002	3,228	226	7.5%	9.7%	48.82%	1,142
Riverside Sheriff's Dept.	3,215	3,357	142	4.4%	6.1%	54.90%	1,284
Tulare Sheriff's Dept.	1,354	1,494	140	10.3%	6.0%	60.88%	1,424
Orange Sheriff's Dept.	6,083	6,202	119	2.0%	5.1%	65.97%	1,543
San Joaquin Sheriff's Dept.	1,319	1,435	116	8.8%	5.0%	70.93%	1,659
Ventura Sheriff's Dept.	1,548	1,643	95	6.1%	4.1%	74.99%	1,754
Alameda Sheriff's Dept.	3,902	3,988	86	2.2%	3.7%	78.67%	1,840
Placer Sheriff's Dept.	531	588	57	10.7%	2.4%	81.10%	1,897
Merced Sheriff's Dept.	704	760	56	8.0%	2.4%	83.50%	1,953
Stanislaus Sheriff's Dept.	1,290	1,345	55	4.3%	2.4%	85.85%	2,008
Kern Sheriff's Dept.	2,240	2,288	48	2.1%	2.1%	87.90%	2,056
Lake Sheriff's Dept.	262	300	38	14.5%	1.6%	89.53%	2,094
San Mateo Sheriff's Dept.	1,060	1,098	38	3.6%	1.6%	91.15%	2,132
Solano Sheriff's Dept.	1,053	1,089	36	3.4%	1.5%	92.69%	2,168
Monterey Sheriff's Dept.	1,174	1,206	32	2.7%	1.4%	94.06%	2,200
El Dorado Sheriff's Dept.	337	362	25	7.4%	1.1%	95.13%	2,225
San Diego Sheriff's Dept.	5,109	5,126	17	0.3%	0.7%	95.85%	2,242
Madera Corrections Dept.	372	387	15	4.0%	0.6%	96.49%	2,257
Tuolumne Sheriff's Dept.	135	147	12	8.9%	0.5%	97.01%	2,269
Santa Clara Corrections Dept.	4,405	4,414	9	0.2%	0.4%	97.39%	2,278
Marin Sheriff's Dept.	317	325	8	2.5%	0.3%	97.73%	2,286
Inyo Sheriff's Dept.	86	94	8	9.3%	0.3%	98.08%	2,294
Kings Sheriff's Dept.	291	299	8	2.7%	0.3%	98.42%	2,302
San Francisco Sheriff's Dept.	1,812	1,820	8	0.4%	0.3%	98.76%	2,310
Plumas Sheriff's Dept.	50	57	7	14.0%	0.3%	99.06%	2,317
Trinity Sheriff's Dept.	42	48	6	14.3%	0.3%	99.32%	2,323
Lassen Sheriff's Dept.	92	96	4	4.3%	0.2%	99.49%	2,327
Siskiyou Sheriff's Dept.	95	98	3	3.2%	0.1%	99.62%	2,330
Sierra Sheriff's Dept.	6	9	3	50.0%	0.1%	99.74%	2,333
Calaveras Sheriff's Dept.	77	79	2	2.6%	0.1%	99.83%	2,335
Tehama Sheriff's Dept.	173	175	2	1.2%	0.1%	99.91%	2,337
Mariposa Sheriff's Dept.	53	55	2	3.8%	0.1%	100.00%	2,339
Ventura Work Furlough	124	124	0	0.0%	0.0%	100.00%	2,339
Butte Sheriff's Dept.	498	497	-1	-0.2%	0.1%	0.12%	-1
Amador Sheriff's Dept.	92	91	-1	-1.1%	0.1%	0.23%	-2
San Luis Obispo Sheriff's Dept.	527	525	-2	-0.4%	0.2%	0.47%	-4
San Benito Sheriff's Dept.	121	118	-3	-2.5%	0.4%	0.82%	-7
Colusa Sheriff's Dept.	46	42	-4	-8.7%	0.5%	1.29%	-11
Yuba Sheriff's Dept.	414	410	-4	-1.0%	0.5%	1.76%	-15
Mono Sheriff's Dept.	36	30	-6	-16.7%	0.7%	2.46%	-21
Del Norte Sheriff's Dept.	139	131	-8	-5.8%	0.9%	3.40%	-29
Humboldt Sheriff's Dept.	377	368	-9	-2.4%	1.1%	4.45%	-38
Modoc Sheriff's Dept.	40	31	-9	-22.5%	1.1%	5.50%	-47
Sutter Sheriff's Dept.	278	269	-9	-3.2%	1.1%	6.56%	-56
Mendocino Sheriff's Dept.	279	270	-9	-3.2%	1.1%	7.61%	-65
Sonoma Sheriff's Dept.	1,144	1,134	-10	-0.9%	1.2%	8.78%	-75
Nevada Sheriff's Dept.	187	174	-13	-7.0%	1.5%	10.30%	-88
Napa Corrections Dept.	254	235	-19	-7.5%	2.2%	12.53%	-107
Santa Clara Probation Dept.	213	192	-21	-9.9%	2.5%	14.99%	-128
Yolo Sheriff's Dept.	428	405	-23	-5.4%	2.7%	17.68%	-151
Contra Costa Sheriff's Dept.	1,663	1,639	-24	-1.4%	2.8%	20.49%	-175
Santa Ana Police Dept.	413	384	-29	-7.0%	3.4%	23.89%	-204
Glenn Sheriff's Dept.	148	114	-34	-23.0%	4.0%	27.87%	-238
Shasta Sheriff's Dept.	405	370	-35	-8.6%	4.1%	31.97%	-273
Santa Barbara Sheriff's Dept.	1,020	983	-37	-3.6%	4.3%	36.30%	-310
Imperial Sheriff's Dept.	616	547	-69	-11.2%	8.1%	44.38%	-379
Santa Cruz Sheriff's Dept.	605	521	-84	-13.9%	9.8%	54.22%	-463
Oakland Police Dept.	105		-105	-100.0%	12.3%	66.51%	-568
San Bernardino Sheriff's Dept.	5,576	5,442	-134	-2.4%	15.7%	82.20%	-702
San Diego Work Furlough	356	204	-152	-42.7%	17.8%	100.00%	-854

Note: Totals subject to slight variation due to rounding

Total Increase:	2,339
Total Decrease:	-854

Interpretation of Table:
JAIL POPULATIONS: 2nd Quarter '05 versus 2nd Quarter '06

This table:

- summarizes the ADP results for the 61 jurisdictions in California reporting data from Type II, III, and IV jails;
- summarizes jurisdiction ADP results for the most recent quarter (Column C);
- compares jurisdiction ADP for the most recent quarter with the same quarter last year (Column B);
- ranks the jurisdictions in terms of gains or losses in ADP from high to low (Column D);
- lists the percentage growth or decline in ADP for each jurisdiction (Column E);
- lists the percentage of the overall State increase or decrease in ADP that is represented by each jurisdiction (Column F);
- lists, by jurisdiction, the cumulative percentage increase and decrease in the State ADP starting with the jurisdiction with the highest percentage of the increase and proceeding to the jurisdiction with the highest percentage of the decrease (Column G);
- lists, by jurisdiction, the cumulative total increase and decrease in the State ADP starting with the jurisdiction with the highest increase and proceeding to the jurisdiction with the biggest decrease (Column H); and,
- lists the jurisdictions that experienced decreases in their ADP as shaded.

Some important conclusions from this table are:

1. The two numbers at the bottom indicate the "total increase" in ADP (in this case 2,339) and "total decrease" in ADP (-854). In other words, the jurisdictions experiencing increases had a total increase of 2,339 ADP; and the jurisdictions experiencing decreases had a total decrease of 854 ADP. Subtracting 854 from 2,339 produces the overall increase of 1,485 between the second quarter of 2005 and the second quarter of 2006.
2. The Sacramento County ADP increase of 589 is 25.2% of the total increase of 2,339. Thirty-four jurisdictions had increases (down to Mariposa Sheriff's Department) with 1 jurisdiction reporting no increase (Ventura Work Furlough Program). When you get to Ventura Work Furlough Program, you have accounted for 100% of the increases (100% of the cumulative total of 2,339).
3. Jurisdictions that experienced a decrease in ADP are listed from smallest decrease to largest decrease (Butte Sheriff's Department to San Diego Work Furlough Program). When you get to the bottom of the table, you have accounted for 100% of the total decreases of 854 inmates.
4. The cumulative percentage of ADP increase for the top four jurisdictions (Sacramento Sheriff's Department to Riverside Sheriff's Department) is 54.9%. In other words, four jurisdictions accounted for over 54% of the total ADP increase. Three jurisdictions (Oakland Police Department, San Bernardino Sheriff's Department, and San Diego Work Furlough Program) account for about 46% of the decreases. Please note that Oakland Police Department will no longer be reporting on the Jail Profile Survey due to the closure of its jail, which accounts for approximately 12.3% of the total decrease.