



JAIL PROFILE SURVEY

FIRST QUARTER CALENDAR YEAR 2014
SURVEY RESULTS



EXPLANATION OF RESULTS

The following pages contain the Jail Profile Survey (JPS) results for the First Quarter of Calendar Year 2014. Page 2 contains the quarterly totals based upon the monthly and quarterly data submitted to us by the participating jurisdictions. Pages 3 and 4 show the trend data for the last 10 years on variables we have been tracking. The information below provides explanations and clarifications of the data presented.

Page 2

- Unless otherwise noted, projected totals are based upon the average per day for the variable in question. For example, there was an average of 82,527 inmates per day in local jails (excluding Type I's) during January through March 2014.
- For some variables (other than "ADP"), we did not receive complete data from all jurisdictions. In such instances, we used statistical procedures to estimate the statewide total.
- The number of "Bookings Per Month" is the average of the monthly totals for January, February, and March 2014.
- For the following variables, the numbers presented are the totals as of the mid-quarter (i.e., February 15, 2014): "Pretrial Release", "Early Release", "2 Strike Inmates", "3 Strike Inmates", "Felony Warrants", "Misdemeanor Warrants", "Juveniles in Custody", and "Criminal / Illegal Aliens [undocumented aliens]".
- "Assaults On Staff" are defined as the total number of serious inmate assaults on staff (resulting in a crime report), statewide, during the First Quarter of Calendar Year 2014.
- Note: Totals are subject to slight variation due to rounding.

Pages 3 and 4

- The data in the 10-Year Summary tables are based upon survey data that the Board of State and Community Corrections (BSCC) has gathered since the early 1980's.
- Prior to 1995, yearly averages were reported on an annual basis. Yearly averages from 1996 to the present time have been the average of the 12 calendar months. (In 1995, the yearly figure reported is the fourth quarter average, since we do not have data from the first three quarters.)

Please note: Each quarter, every county with Type II, III, and IV detention facilities submits their data to the BSCC. While we make every effort to review data for accuracy, including contacting individual counties for clarification, the BSCC cannot be responsible for data reporting errors made at the county level. While the county-specific data presented in this report are current as of August 13, 2014, all data are available for updates as needed.

BOARD OF STATE AND COMMUNITY CORRECTIONS JAIL PROFILE SURVEY

Reporting Period: January to March, 2014

County Jail Populations

ADP ^a	82,527 ^b
Holding Areas	1,341
Average "Under the Roof" ^c	83,868 ^d
Highest One Day Count	86,098 ^e

County Jail Populations

Felony	72,664
Misdemeanor	9,863
Total	82,527
Non-Sentenced Males	45,464
Non-Sentenced Females	6,024
Sentenced Males	26,230
Sentenced Females	4,809
Total	82,527
Maximum Security Inmates	23,269
Medium Security Inmates	34,627
Minimum Security Inmates	24,631
Total	82,527

Inmates From Other Jurisdictions

Housed on Federal Contract	3,074
Housed on Contract with CDC	0
From Other Counties on Contract	119
Awaiting Transport	1,494
Total	4,687

Special Use Beds

Medical Beds	1,141
Mental Health Beds	2,895

Released Per Month Due to Lack of Space

Pretrial Release	7,498 ^f
Early Release	5,628 ^f
Total	13,126

Inmates with 2 and 3 Strikes

2 Strike Inmates	4,696 ^g
3 Strike Inmates	1,341 ^g
Total	6,037

Unservd Warrants

Felony Warrants	250,165 ^g
Misdemeanor Warrants	1,444,079 ^g
Total	1,694,244

Other Jail Profile Survey Variables

Bookings Per Month	86,375 ^f
Juveniles in Custody	0 ^f
Criminal / Illegal Aliens	8,119
Assaults On Staff	333

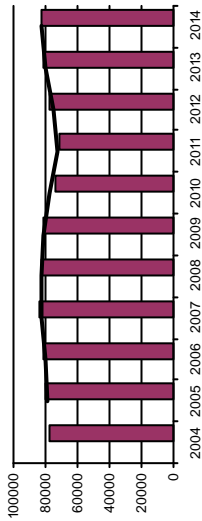
- a. The Average Daily Population for all jurisdictions (excluding Type I's) does not include inmates in holding areas.
 b. Unless otherwise indicated, the numbers reported are the average across the days in the quarter.
 c. "Under the Roof" is the sum of the Average Daily Population plus the average daily number of inmates in Holding Areas.
 d. Totals may not be the exact sum of the subtotals due to rounding.
 e. The sum of all Highest One Day inmate population counts from all jurisdictions.
 f. These data are collected on a monthly basis, this figure is an average of the total numbers collected each month during this quarter.
 g. These data are one-day snapshots collected at the end of the quarter.

Jail Profile Survey

2014

Average Daily Population

10 Year Summary										
2004	2005	2006	2007	2008	2009	2010	2011	2012	2013	2014
76,887	79,705	81,104	83,184	82,397	80,865	73,444	71,015	77,818	81,818	82,527



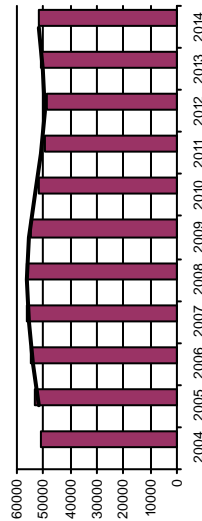
The Average Daily Population (ADP) of 82,527 for the first quarter 2014 represents a slight increase over the fourth quarter 2013, and reflects an increase in ADP for eleven consecutive quarters. The ADP for the first quarter 2014 represents a 2.1% increase over the first quarter 2013.

Quarterly Results

	Q1	Q2	Q3	Q4	Average
2013	80,842	82,019	82,145	82,249	81,818
2014	82,527				82,527

Non-sentenced ADP

10 Year Summary										
2004	2005	2006	2007	2008	2009	2010	2011	2012	2013	2014
50,715	53,357	54,585	56,571	56,232	54,589	52,059	49,705	48,975	51,296	51,488



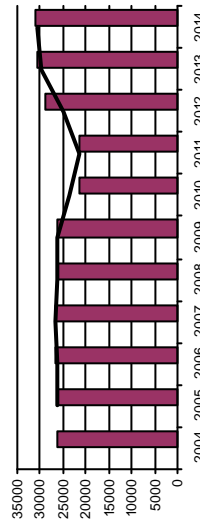
The Non-Sentenced ADP was 51,488 for the first quarter 2014, representing a slight increase over the fourth quarter 2013 and a 1.8% increase over the first quarter 2013.

Quarterly Results

	Q1	Q2	Q3	Q4	Average
2013	50,574	51,400	51,731	51,465	51,296
2014	51,488				51,488

Sentenced ADP

10 Year Summary										
2004	2005	2006	2007	2008	2009	2010	2011	2012	2013	2014
26,171	26,347	26,519	26,613	26,165	26,277	21,385	21,310	28,844	30,522	31,039



The Sentenced ADP was 31,039 for the first quarter 2014, representing a slight increase over the fourth quarter 2013 and an increase of 2.5% over the first quarter 2013.

Quarterly Results

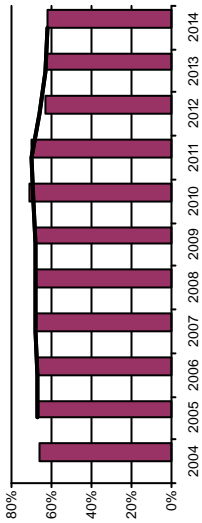
	Q1	Q2	Q3	Q4	Average
2013	30,268	30,619	30,414	30,784	30,522
2014	31,039				31,039

Jail Profile Survey

2014

Percentage Non-sentenced

10 Year Summary										
2004	2005	2006	2007	2008	2009	2010	2011	2012	2013	2014
66%	67%	67%	68%	68%	68%	71%	70%	63%	63%	63%



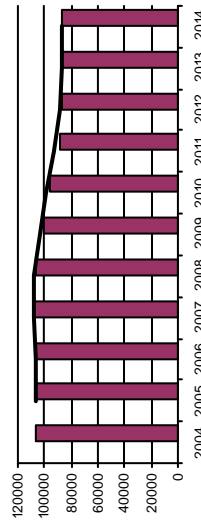
The Percentage of Non-Sentenced inmates for the first quarter 2014 decreased by one percentage point – to 62% – from the first through the fourth quarters of 2013.

Quarterly Results

	Q1	Q2	Q3	Q4	Average
2013	63%	63%	63%	63%	63%
2014	62%				62%

Average Number of Persons Booked Per Month

10 Year Summary										
2004	2005	2006	2007	2008	2009	2010	2011	2012	2013	2014
106,862	107,120	106,868	108,238	107,086	101,223	96,460	88,614	87,560	86,718	86,375



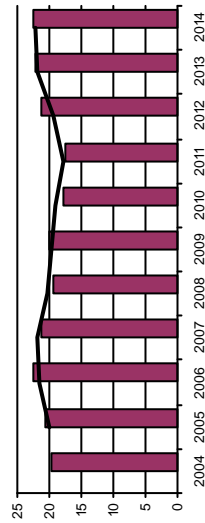
The Average Number of Persons Booked per Month in the first quarter 2014 of 86,375 represents an increase of 2.8% over the fourth quarter 2013 and an increase of 2.1% over the first quarter 2013.

Quarterly Results

	Q1	Q2	Q3	Q4	Average
2013	84,559	88,101	90,142	84,039	86,718
2014	86,375				86,375

Average Length Of Stay

10 Year Summary										
2004	2005	2006	2007	2008	2009	2010	2011	2012	2013	2014
19.8	20.5	22.5	21.4	19.4	20.0	17.9	17.5	21.3	22.1	22.1



The Average Length of Stay (ALS) of 22.4 days in the first quarter 2014 decreased from 22.6 days in the fourth quarter 2013. The ALS for the first quarter 2013 represents a 5.2% increase over the ALS of 21.3 days for the first quarter 2013.

Quarterly Results

	Q1	Q2	Q3	Q4	Average
2013	21.3	22.8	21.8	22.6	22.1
2014	22.4				22.4

Average Daily Population

Non-sentenced / Sentenced Male / Female

California County Jails - For Months Of January - March 2014

	Non-sentenced			Sentenced			Total
	Male	Female	Total	Male	Female	Total	
	#	%	#	%	#	%	
Jurisdiction							
1. Alameda Sheriff's Dept.	2,337	91%	223	9%	2,560	78%	3,301
2. Amador Sheriff's Dept.	36	76%	11	24%	47	52%	91
3. Butte Sheriff's Dept.	317	85%	56	15%	373	64%	587
4. Calaveras Sheriff's Dept.	30	83%	6	17%	36	51%	71
5. Colusa Sheriff's Dept.	49	87%	7	13%	56	69%	81
6. Contra Costa Sheriff's Dept.	1,061	89%	128	11%	1,190	77%	1,543
7. Del Norte Sheriff's Dept.	40	86%	7	14%	47	50%	94
8. El Dorado Sheriff's Dept.	165	82%	36	18%	201	55%	365
9. Fresno Sheriff's Dept.	1,938	92%	170	8%	2,108	71%	2,950
10. Glenn Sheriff's Dept.	60	84%	11	16%	72	65%	111
11. Humboldt Sheriff's Dept.	197	87%	30	13%	227	62%	365
12. Imperial Sheriff's Dept.	275	90%	32	10%	307	56%	552
13. Inyo Sheriff's Dept.	32	88%	4	12%	36	47%	77
14. Kern Sheriff's Dept.	1,466	88%	200	12%	1,666	65%	2,566
15. Kings Sheriff's Dept.	232	85%	40	15%	273	45%	611
16. Lake Sheriff's Dept.	152	85%	26	15%	179	53%	339
17. Lassen Sheriff's Dept.	37	80%	9	20%	46	37%	124
18. Los Angeles Sheriff's Dept.	8,716	88%	1,173	12%	9,889	53%	18,610
19. Madera Corrections Dept.	335	86%	54	14%	390	86%	451
20. Marin Sheriff's Dept.	194	87%	28	13%	222	74%	299
21. Mariposa Sheriff's Dept.	20	87%	3	13%	23	52%	44
22. Mendocino Sheriff's Dept.	138	85%	25	15%	163	57%	286
23. Merced Sheriff's Dept.	516	90%	60	10%	576	67%	856
24. Modoc Sheriff's Dept.	13	87%	2	13%	15	47%	32
25. Mono Sheriff's Dept.	15	82%	3	18%	18	51%	36
26. Monterey Sheriff's Dept.	631	88%	85	12%	716	75%	954
27. Napa Corrections Dept.	160	87%	24	13%	184	75%	243
28. Nevada Sheriff's Dept.	152	79%	40	21%	192	86%	223
29. Orange Sheriff's Dept.	3,193	88%	440	12%	3,633	52%	6,928
30. Placer Sheriff's Dept.	376	88%	52	12%	428	65%	655
31. Plumas Sheriff's Dept.	31	90%	3	10%	34	58%	59
32. Riverside Sheriff's Dept.	2,520	89%	301	11%	2,820	72%	3,944
33. Sacramento Sheriff's Dept.	2,240	93%	166	7%	2,406	56%	4,289
34. San Benito Sheriff's Dept.	73	84%	14	16%	87	68%	127
35. San Bernardino Sheriff's Dept.	3,880	89%	502	11%	4,382	76%	5,744

Average Daily Population

Non-sentenced / Sentenced Male / Female

California County Jails - For Months Of January - March 2014

Jurisdiction	Non-sentenced			Sentenced			Total						
	Male	Female	Total	Male	Female	Total							
	#	%	#	%	#	%							
36. San Diego Sheriff's Dept.	2,567	85%	437	15%	3,004	52%	2,300	84%	424	16%	2,723	48%	5,727
37. San Diego Work Furlough	0	0%	0	100%	0	0%	237	75%	80	25%	317	100%	318
38. San Francisco Sheriff's Dept.	980	90%	108	10%	1,088	85%	172	90%	19	10%	191	15%	1,278
39. San Joaquin Sheriff's Dept.	801	89%	104	11%	905	63%	472	87%	69	13%	541	37%	1,446
40. San Luis Obispo Sheriff's Dept.	328	86%	55	14%	383	55%	259	83%	55	17%	314	45%	697
41. San Mateo Sheriff's Dept.	591	88%	77	12%	668	62%	338	83%	69	17%	407	38%	1,075
42. Santa Ana Police Dept.	336	80%	82	20%	418	100%	0	0%	0	0%	0	0%	418
43. Santa Barbara Sheriff's Dept.	640	85%	109	15%	749	75%	212	85%	39	15%	250	25%	999
44. Santa Clara Corrections Dept.	2,554	88%	357	12%	2,912	72%	968	84%	187	16%	1,155	28%	4,066
45. Santa Cruz Sheriff's Dept.	271	88%	35	12%	306	70%	106	81%	25	19%	131	30%	437
46. Shasta Sheriff's Dept.	205	83%	41	17%	247	75%	73	88%	10	12%	83	25%	329
47. Sierra Sheriff's Dept.	5	94%	0	6%	6	63%	2	50%	2	50%	3	37%	9
48. Siskiyou Sheriff's Dept.	64	88%	8	12%	72	76%	21	93%	2	7%	23	24%	95
49. Solano Sheriff's Dept.	548	87%	81	13%	629	68%	261	90%	29	10%	290	32%	919
50. Sonoma Sheriff's Dept.	434	86%	71	14%	505	47%	475	84%	92	16%	567	53%	1,073
51. Stanislaus Sheriff's Dept.	821	88%	110	12%	931	81%	184	87%	28	13%	212	19%	1,143
52. Sutter Sheriff's Dept.	172	87%	27	13%	199	79%	27	51%	26	49%	53	21%	252
53. Tehama Sheriff's Dept.	97	88%	13	12%	109	59%	66	88%	9	12%	75	41%	184
54. Trinity Sheriff's Dept.	26	93%	2	7%	28	55%	20	90%	2	10%	22	45%	50
55. Tulare Sheriff's Dept.	914	89%	108	11%	1,022	61%	523	80%	127	20%	650	39%	1,672
56. Tuolumne Sheriff's Dept.	78	78%	22	22%	100	72%	29	73%	11	27%	39	28%	139
57. Ventura Sheriff's Dept.	860	87%	123	13%	983	59%	546	81%	124	19%	671	41%	1,654
58. Ventura Work Furlough	0	0%	0	0%	0	0%	61	87%	9	13%	70	100%	70
59. Yolo Sheriff's Dept.	249	87%	38	13%	287	62%	161	92%	15	8%	176	38%	463
60. Yuba Sheriff's Dept.	296	88%	40	12%	336	83%	57	84%	11	16%	67	17%	403
Statewide	45,463	88%	6,024	12%	51,488	62%	26,230	85%	4,809	15%	31,039	38%	82,527

Jail Populations: Quarter 1, 2013 Versus Quarter 1, 2014

Jurisdiction	Qtr 1, 2013	Qtr 1, 2014	Qtr 1, 2014 Minus Qtr 1, 2013	Qtr 1, 2013 To Qtr 1, 2014 % +/-	% of Total Increase or Decrease	Cum %	Cum Total
San Diego Sheriff's Dept.	5,310	5,727	417	7.9%	16.9%	16.94%	417
Los Angeles Sheriff's Dept.	18,202	18,609	407	2.2%	16.5%	33.47%	824
Santa Clara Corrections Dept.	3,762	4,066	304	8.1%	12.3%	45.82%	1,128
Sacramento Sheriff's Dept.	4,058	4,288	230	5.7%	9.3%	55.16%	1,358
Orange Sheriff's Dept.	6,736	6,929	193	2.9%	7.8%	63.00%	1,551
Kings Sheriff's Dept.	494	611	117	23.7%	4.8%	67.75%	1,668
Ventura Sheriff's Dept.	1,548	1,654	106	6.8%	4.3%	72.06%	1,774
San Diego Work Furlough	230	318	88	38.3%	3.6%	75.63%	1,862
Contra Costa Sheriff's Dept.	1,461	1,543	82	5.6%	3.3%	78.96%	1,944
Riverside Sheriff's Dept.	3,876	3,944	68	1.8%	2.8%	81.72%	2,012
Imperial Sheriff's Dept.	497	552	55	11.1%	2.2%	83.96%	2,067
San Mateo Sheriff's Dept.	1,021	1,075	54	5.3%	2.2%	86.15%	2,121
Tulare Sheriff's Dept.	1,630	1,672	42	2.6%	1.7%	87.86%	2,163
Lake Sheriff's Dept.	304	339	35	11.5%	1.4%	89.28%	2,198
Placer Sheriff's Dept.	627	655	28	4.5%	1.1%	90.41%	2,226
Santa Cruz Sheriff's Dept.	410	437	27	6.6%	1.1%	91.51%	2,253
Solano Sheriff's Dept.	894	918	24	2.7%	1.0%	92.49%	2,277
Nevada Sheriff's Dept.	199	223	24	12.1%	1.0%	93.46%	2,301
Plumas Sheriff's Dept.	40	58	18	45.0%	0.7%	94.19%	2,319
Colusa Sheriff's Dept.	67	82	15	22.4%	0.6%	94.80%	2,334
Sonoma Sheriff's Dept.	1,058	1,073	15	1.4%	0.6%	95.41%	2,349
Merced Sheriff's Dept.	842	856	14	1.7%	0.6%	95.98%	2,363
Marin Sheriff's Dept.	284	298	14	4.9%	0.6%	96.55%	2,377
Glenn Sheriff's Dept.	99	111	12	12.1%	0.5%	97.03%	2,389
Yolo Sheriff's Dept.	450	462	12	2.7%	0.5%	97.52%	2,401
Mendocino Sheriff's Dept.	274	286	12	4.4%	0.5%	98.01%	2,413
Mono Sheriff's Dept.	29	37	8	27.6%	0.3%	98.33%	2,421
San Benito Sheriff's Dept.	119	127	8	6.7%	0.3%	98.66%	2,429
Sierra Sheriff's Dept.	3	9	6	200.0%	0.2%	98.90%	2,435
San Joaquin Sheriff's Dept.	1,440	1,446	6	0.4%	0.2%	99.15%	2,441
Santa Barbara Sheriff's Dept.	993	998	5	0.5%	0.2%	99.35%	2,446
Shasta Sheriff's Dept.	324	329	5	1.5%	0.2%	99.55%	2,451
Inyo Sheriff's Dept.	73	77	4	5.5%	0.2%	99.72%	2,455
Stanislaus Sheriff's Dept.	1,140	1,142	2	0.2%	0.1%	99.80%	2,457
Tehama Sheriff's Dept.	182	184	2	1.1%	0.1%	99.88%	2,459
Modoc Sheriff's Dept.	30	32	2	6.7%	0.1%	99.96%	2,461
Tuolumne Sheriff's Dept.	138	139	1	0.7%	0.0%	100.00%	2,462
Calaveras Sheriff's Dept.	70	70	0	0.0%	0.0%	100.00%	2,462
Del Norte Sheriff's Dept.	94	94	0	0.0%	0.0%	100.00%	2,462
Trinity Sheriff's Dept.	50	50	0	0.0%	0.0%	100.00%	2,462
San Luis Obispo Sheriff's Dept.	697	697	0	0.0%	0.0%	100.00%	2,462
Humboldt Sheriff's Dept.	366	365	-1	-0.3%	0.1%	0.13%	-1
Sutter Sheriff's Dept.	255	252	-3	-1.2%	0.4%	0.51%	-4
Siskiyou Sheriff's Dept.	97	94	-3	-3.1%	0.4%	0.89%	-7
San Bernardino Sheriff's Dept.	5,749	5,745	-4	-0.1%	0.5%	1.39%	-11
Mariposa Sheriff's Dept.	49	44	-5	-10.2%	0.6%	2.03%	-16
Lassen Sheriff's Dept.	130	124	-6	-4.6%	0.8%	2.78%	-22
Madera Corrections Dept.	460	452	-8	-1.7%	1.0%	3.80%	-30
Butte Sheriff's Dept.	595	587	-8	-1.3%	1.0%	4.81%	-38
Amador Sheriff's Dept.	103	91	-12	-11.7%	1.5%	6.33%	-50
El Dorado Sheriff's Dept.	378	365	-13	-3.4%	1.6%	7.97%	-63
Yuba Sheriff's Dept.	416	403	-13	-3.1%	1.6%	9.62%	-76
Ventura Work Furlough	86	70	-16	-18.6%	2.0%	11.65%	-92
Napa Corrections Dept.	266	243	-23	-8.6%	2.9%	14.56%	-115
Santa Ana Police Dept.	452	418	-34	-7.5%	4.3%	18.86%	-149
Kern Sheriff's Dept.	2,625	2,566	-59	-2.2%	7.5%	26.33%	-208
Alameda Sheriff's Dept.	3,371	3,300	-71	-2.1%	9.0%	35.32%	-279
Fresno Sheriff's Dept.	3,069	2,950	-119	-3.9%	15.1%	50.38%	-398
Monterey Sheriff's Dept.	1,132	953	-179	-15.8%	22.7%	73.04%	-577
San Francisco Sheriff's Dept.	1,491	1,278	-213	-14.3%	27.0%	100.00%	-790
	80,845	82,517	1,672	Note: Totals subject to slight variation due to rounding			
			Total Increase:	2,462			
			Total Decrease:	-790			

INTERPRETATION OF TABLE

Jail Populations: First Quarter Calendar Year 2013 versus First Quarter Calendar Year 2014 (page 7)

This table:

- summarizes the Average Daily Population (ADP) results for the 60 jurisdictions in California reporting data from Type II, III, and IV jails;
- summarizes jurisdiction ADP results for the most recent quarter (third column from left);
- compares jurisdiction ADP for the most recent quarter with the same quarter last year (second column from left);
- ranks the jurisdictions in terms of gains or losses in ADP from high to low (fourth column from left);
- lists the percentage of growth or decline in ADP for each jurisdiction (fifth column from left);
- lists the percentage of the overall state increase or decrease in ADP that is represented by each jurisdiction (sixth column from left);
- lists by jurisdiction the cumulative percentage increase and decrease in the state ADP (seventh column from left), starting with the jurisdiction with the largest percentage of increase and proceeding to the jurisdiction with the largest percentage of decrease;
- lists by jurisdiction the cumulative total increase and decrease in the state ADP (eighth column from left), starting with the jurisdiction with the highest increase first and proceeding to the jurisdiction with the highest decrease last; and,
- lists the jurisdictions that experienced decreases in their ADP as shaded.

Some important conclusions from this table are:

1. The two numbers at the bottom indicate the "Total Increase" in ADP (in this case 2,462) and "Total Decrease" in ADP (790). Specifically, the jurisdictions experiencing increases had a total increase of 2,462 ADP, and the jurisdictions experiencing decreases had a total decrease of 790 ADP. Subtracting 790 from 2,462 produces the overall increase of 1,672 between the First Quarter of Calendar Year 2013 and the First Quarter of Calendar Year 2014.
2. The San Diego Sheriff's Department's ADP increase of 417 is 16.9% of the total increase of 2,462. Thirty-seven jurisdictions had increases (San Diego Sheriff's Department to Tuolumne Sheriff's Department), with four jurisdictions (Calaveras Sheriff's Department, Del Norte Sheriff's Department, Trinity Sheriff's Department, and San Luis Obispo Sheriff's Department) reporting no change. When you get to Tuolumne Sheriff's Department, you have accounted for 100% of the increase (100% of the cumulative total of 2,462).
3. Jurisdictions that experienced a decrease in ADP are listed from smallest decrease to largest decrease (Humboldt Sheriff's Department to San Francisco Sheriff's Department). When you get to the bottom of the table, you have accounted for 100% of the total decrease of 790 inmates.
4. The cumulative percentage of ADP increase for the top four jurisdictions (San Diego Sheriff's Department, Los Angeles Sheriff's Department, Santa Clara Corrections Department, and Sacramento Sheriff's Department) is 55%. Four jurisdictions (Alameda Sheriff's Department, Fresno Sheriff's Department, Monterey Sheriff's Department, and San Francisco Sheriff's Department) account for 73.8% of the total decrease.