



# JUVENILE DETENTION PROFILE SURVEY

THIRD QUARTER CALENDAR YEAR 2014  
SURVEY RESULTS



## EXPLANATION OF RESULTS

The following pages contain the Juvenile Detention Profile Survey (JDPS) results for the Third Quarter of Calendar Year 2014. Page 2 contains totals for major categories such as the average daily population (ADP), highest one-day population, gender, and age range of detained minors. Page 3 contains information regarding counties' ADP and rated capacity (RC) breakouts, and page 4 contains information about a wide range of juvenile detention facility issues, including mental health needs, crowding, number of bookings, and average length of stay.

***Pages 5, 6, and 7 contain trend information compiled from Calendar Year 2009 through Calendar Year 2014. The trend data is separated into Juvenile Hall related data and Camp related data.***

Please keep the following in mind when reviewing this information:

- For overall capacity, crowding (highest one-day population – the count of minors in detention on the day of each county's highest population) and ADP (the average daily detention population for the reporting period), we have complete data from all jurisdictions in the state that operate juvenile detention facilities.
- Each jurisdiction provides us with the average population, computed across all the days in the month, for each of the three months in the quarter. The weighted average across the three months is then computed for each jurisdiction (with the monthly averages weighted by the number of days in the month). The jurisdictions' ADPs are then combined to produce the state's total ADP.
- For some variables (other than ADP), we did not receive complete data from all jurisdictions. In such instances, we used statistical procedures to estimate the statewide total.
- Felony/misdemeanor, gender counts, and age-range breakouts are based upon a one-day snapshot (on the 15<sup>th</sup> day of the final month of the quarter). These values are used to determine the percentage of the population in each felony/misdemeanor, gender, and age-range category. The percentages are then applied to the total ADP to project the expected ADP in each of the felony/misdemeanor, gender, and age-range categories.
- In addition to the population breakdowns for juvenile halls and camps, the report contains like information for youth who were part of non-facility based, alternative to detention programs. Youth in that category are listed under "Other Detention." Other detention includes home supervision with and without electronic monitoring, day reporting centers, work programs, and other alternatives to detention **for which youth are credited with custody time.**
- ***Please note:***
  - In early 2011, eight regional trainings were held for county reporters and contributors to the JDPS. When interpreting the JDPS results from the second quarter of 2011 forward, please consider that the clarification of variable definitions and calculations which occurred at those trainings may explain some unanticipated differences when compared to prior quarters.
  - Each quarter, every county with juvenile detention facilities submits their data to the Board of State and Community Corrections (BSCC). While we make every effort to review data for accuracy, including contacting individual counties for clarification, the BSCC cannot be responsible for data reporting errors made at the county level.

**Board of State and Community Corrections**  
**Juvenile Detention Profile Survey - 3rd Quarter, 2014**  
**Overall Capacity, Population and ADP**

Overall Capacity and Population							
	JUVENILE HALL		CAMPS		OTHER	TOTAL	
ADP	3,564.9		2,123.8		1,392.0	7,080.7	
Percent of Total	50.3%		30.0%		19.7%	100.0%	
RC *	8,196.2		4,739.8			12,936.0	
High One Day	4,166.0		2,327.0			6,493.0	

Gender by Detention Type								
	JUVENILE HALL		CAMPS		OTHER		TOTAL	
GENDER	ADP	%	ADP	%	ADP	%	ADP	%
Male	2,997.1	84.1%	1,937.8	91.2%	1,155.0	83.0%	6,089.9	86.0%
Female	567.8	15.9%	186.0	8.8%	237.1	17.0%	990.8	14.0%
<b>TOTAL</b>	<b>3,564.9</b>	<b>100.0%</b>	<b>2,123.8</b>	<b>100.0%</b>	<b>1,392.0</b>	<b>100.0%</b>	<b>7,080.7</b>	<b>100.0%</b>

Disposition by Gender for Juvenile Halls							
	MALE		FEMALE		TOTAL		
DISPOSITION	Number	%	Number	%	Number	%	
Pre-Disposition	1,594.1	53.2%	308.3	54.3%	1,902.4	53.4%	
Post-Disposition	1,403.0	46.8%	259.5	45.7%	1,662.5	46.6%	
<b>TOTAL</b>	<b>2,997.1</b>	<b>100.0%</b>	<b>567.8</b>	<b>100.0%</b>	<b>3,564.9</b>	<b>100.0%</b>	

Disposition by Gender for Other Detention							
	MALE		FEMALE		TOTAL		
DISPOSITION	Number	%	Number	%	Number	%	
Pre-Disposition	527.5	45.7%	111.1	46.9%	638.6	45.9%	
Post-Disposition	627.5	54.3%	125.9	53.1%	753.4	54.1%	
<b>TOTAL</b>	<b>1,155.0</b>	<b>100.0%</b>	<b>237.1</b>	<b>100.0%</b>	<b>1,392.0</b>	<b>100.0%</b>	

Age Range by Type of Detention (One-Day Snapshot)							
	JUVENILE HALL		CAMPS		TOTAL		
AGE RANGES	Number	%	Number	%	Number	%	
Under 12	5.0	0.1%	1.0	0.0%	6.0	0.1%	
12 to 14	373.0	10.4%	120.0	5.5%	493.0	8.5%	
15 to 17	2,844.0	79.1%	1,600.0	73.0%	4,444.0	76.8%	
18 Over	373.0	10.4%	471.0	21.5%	844.0	14.6%	
<b>TOTAL</b>	<b>3,595.0</b>	<b>100.0%</b>	<b>2,192.0</b>	<b>100.0%</b>	<b>5,787.0</b>	<b>100.0%</b>	

\* RC is Rated Capacity which is the number of beds that comply with standards set forth in Title 24, California Code of Regulations.

**County Breakout Report - 3rd Quarter, 2014  
Facilities and Alternative Detention**

	<b>County</b>	<b>Rated Capacity</b>	<b>Facilities Detention</b>	<b>Other Detention</b>	<b>ADP</b>	<b>Percent of Total</b>	<b>Cumulative Percent</b>
1	Los Angeles	3,554	1,426.7	354.16	1,780.9	25.15%	25.15%
2	San Diego	1,105	488.7	171.50	660.2	9.32%	34.48%
3	Orange	743	386.9	45.96	432.9	6.11%	40.59%
4	Fresno	450	288.3	122.68	411.0	5.80%	46.39%
5	Kern	485	360.2	0.37	360.5	5.09%	51.49%
6	Sacramento	424	183.5	165.08	348.5	4.92%	56.41%
7	San Bernardino	484	271.7	0.00	271.7	3.84%	60.24%
8	Santa Clara	474	165.0	101.60	266.6	3.76%	64.01%
9	Tulare	330	145.7	109.03	254.7	3.60%	67.61%
10	Contra Costa	390	227.7	0.00	227.7	3.22%	70.82%
11	Riverside	430	182.6	21.25	203.8	2.88%	73.70%
12	Alameda	463	192.7	0.00	192.7	2.72%	76.42%
13	San Mateo	245	109.2	66.63	175.9	2.48%	78.91%
14	Merced	120	56.3	66.74	123.0	1.74%	80.64%
15	Stanislaus	218	86.2	30.73	117.0	1.65%	82.29%
16	San Joaquin	224	113.6	0.00	113.6	1.60%	83.90%
17	Sonoma	164	80.9	30.77	111.7	1.58%	85.48%
18	Monterey	190	87.0	21.24	108.3	1.53%	87.01%
19	Ventura	420	95.4	0.00	95.4	1.35%	88.35%
20	Santa Barbara	232	92.6	0.00	92.6	1.31%	89.66%
21	San Francisco	198	83.0	0.00	83.0	1.17%	90.83%
22	Madera	70	53.0	8.01	61.0	0.86%	91.70%
23	Solano	148	60.4	0.00	60.4	0.85%	92.55%
24	Kings	85	44.8	8.71	53.5	0.76%	93.30%
25	Yuba	120	50.5	0.00	50.5	0.71%	94.02%
26	Yolo	90	22.6	25.02	47.6	0.67%	94.69%
27	Butte	120	33.7	0.00	33.7	0.48%	95.17%
28	Shasta	90	25.0	7.00	32.0	0.45%	95.62%
29	Humboldt	44	25.8	3.79	29.6	0.42%	96.04%
30	Del Norte	62	28.4	0.00	28.4	0.40%	96.44%
31	Lake	30	13.0	13.65	26.7	0.38%	96.81%
32	El Dorado	80	20.4	6.32	26.7	0.38%	97.19%
33	San Luis Obispo	45	25.7	0.00	25.7	0.36%	97.55%
34	Placer	78	23.3	0.00	23.3	0.33%	97.88%
35	Napa	50	23.0	0.00	23.0	0.32%	98.21%
36	Nevada	60	15.3	5.30	20.6	0.29%	98.50%
37	Santa Cruz	42	18.6	0.00	18.6	0.26%	98.76%
38	Tehama	60	14.1	0.00	14.1	0.20%	98.96%
39	Lassen	40	9.6	2.99	12.6	0.18%	99.14%
40	San Benito	20	9.7	2.66	12.4	0.17%	99.31%
41	Imperial	72	10.0	0.00	10.0	0.14%	99.45%
42	Siskiyou	40	9.7	0.00	9.7	0.14%	99.59%
43	Mendocino	43	8.4	0.00	8.4	0.12%	99.71%
44	Marin	40	7.5	0.83	8.3	0.12%	99.83%
45	Glenn	22	8.2	0.00	8.2	0.12%	99.94%
46	Inyo	14	3.4	0.00	3.4	0.05%	99.99%
47	Trinity	24	0.7	0.00	0.7	0.01%	100.00%
48	Mariposa	4	0.0	0.00	0.0	0.00%	100.00%
49	Tuolumne	0	0.0	0.00	0.0	0.00%	100.00%
		<b>12,936</b>	<b>5,688.7</b>	<b>1,392.0</b>	<b>7,080.7</b>	<b>100.00%</b>	

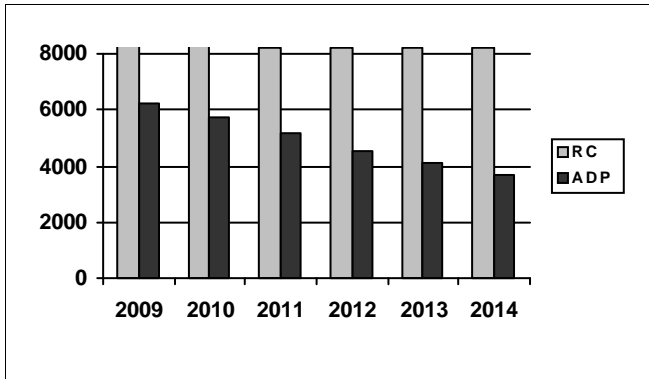
\*ADP on County Breakout Report may not equal ADP on other Summary Reports due to rounding

## Juvenile Detention Profile Survey

3rd Quarter Report 2014	One Day Snapshot									
	Rated Capacity	Misdemeanor		Felony		Pre-Disposition		Post-Disposition		Total ADP
		Male	Female	Male	Female	Male	Female	Male	Female	
<b>Juvenile Halls</b>	8,196.2	14.7%	4.5%	27.2%	3.5%	1,594.1	308.3	1,403.0	259.5	3,564.9
<b>Camps / Ranches</b>	4,739.8	7.0%	1.5%	21.0%	1.9%			1,937.8	186.0	2,123.8
<b>Other Juveniles in the System</b>										
Juveniles on home supervision with electronic monitoring		3.0%	0.9%	5.7%	1.1%	342.2	77.0	383.8	72.6	875.6
Juveniles on home supervision without electronic monitoring		1.5%	0.6%	2.5%	0.4%	183.7	34.1	130.8	40.5	389.1
Juveniles alternative confinement programs		0.8%	0.1%	2.0%	0.1%	1.6	0.0	112.9	12.8	127.3
<b>Grand Totals</b>		<b>27.1%</b>	<b>7.7%</b>	<b>58.3%</b>	<b>6.9%</b>	<b>2,121.6</b>	<b>419.4</b>	<b>3,968.3</b>	<b>571.4</b>	<b>7,080.7</b>
<b>Mental Health Snapshot</b>										
Number of open mental health cases this day									3,644.4	
Number of juveniles receiving psychotropic medication									1,406.1	
<b>Crowding</b>										
Average daily population of juveniles in other jurisdictions DUE TO LACK OF SPACE									0.0	
Number of juveniles released early DUE TO LACK OF SPACE									0.0	
Average number of days that one or more facilities in a county exceeded the Rated Capacity									0.0	
<b>Average Bookings Per Month</b>										
Number of Juvenile Hall bookings/admissions									4,264.3	
Number of bookings for weapon-related offenses									293.3	
Number of 601 bookings									7.0	
Number of 777 bookings									915.1	
Number of direct file {WIC 602(b) and 707(d)} bookings									42.7	
<b>Final Month of the Quarter (One-Day Snapshot)</b>										
Detained for 707b Offense									729.0	
Awaiting placement									349.0	
Awaiting transport to a camp									141.0	
Awaiting transfer to Youth Authority									47.0	
Court commitments to juvenile hall (Ricardo M)									404.0	
Found unfit per 707.01 WIC									54.0	
Direct files to Adult Court-602(b) and 707(d) WIC									312.0	
Hospitalized outside detention facility for MEDICAL CARE									5.0	
Hospitalized outside detention facility for MENTAL HEALTH CARE									5.0	
Believed to be criminal illegal aliens									110.2	
<b>Average Length of Stay</b>										
Juvenile Hall (all releases)									41.1	
Juvenile Hall to Camps									33.3	
Juvenile Hall to other out-of-home placements (i.e. group homes or foster homes)									45.7	
Juvenile Hall who were found unfit (per juvenile court)									390.5	
Juvenile Hall who were direct filings to adult court									308.3	
Camps (all releases)									122.4	
<b>Cumulative Total for the Quarter</b>										
<b>Detention Behavior</b>						<b>Juvenile Halls</b>	<b>Camps / Ranches</b>	<b>Other Detention</b>		
Assaults by juveniles on staff						28.0	9.0	0.0		
Escapes						2.0	42.0	10.0		
Suicide Attempts						27.0	4.0	0.0		
Suicides						0.0	0.0	0.0		

## Third Quarter Report, 2014 - Juvenile Hall Data

### Rated Capacity RC and ADP for Juvenile Halls

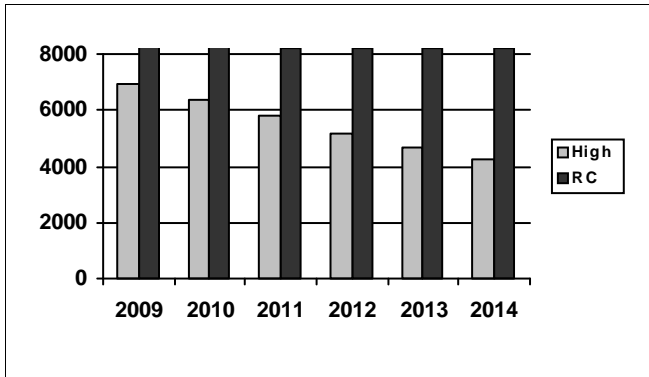


The third quarter ADP of 3,565 is the lowest reported since this agency began collecting JDPS data in 1999. Based on historical trends, we can expect ADP to decrease slightly in the fourth quarter.

Summary of Juvenile Hall ADP				
2009	2010	2011	2012	2013
6,197	5,721	5,137	4,546	4,103

2014 Summary of Juvenile Hall ADP				
Q1	Q2	Q3		Average
3,682	3,803	3,565		3,683

### Juvenile Hall Highest One-Day Population and RC

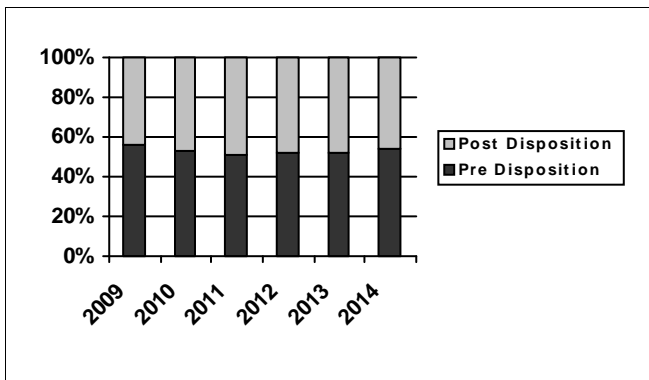


After a slight increase in the second quarter of 2014, the highest one day population for the third quarter of 2014 decreased to a level similar to the first quarter of 2014. County Juvenile Hall populations continue to be below the rated capacity, even on days that they experience the highest population.

Summary of Juvenile Hall Highest One Day				
2009	2010	2011	2012	2013
6,914	6,386	5,795	5,154	4,687

2014 Summary of Highest One-Day Population				
Q1	Q2	Q3		Average
4,198	4,286	4,166		4,217

### Pre-Disposition in Juvenile Halls



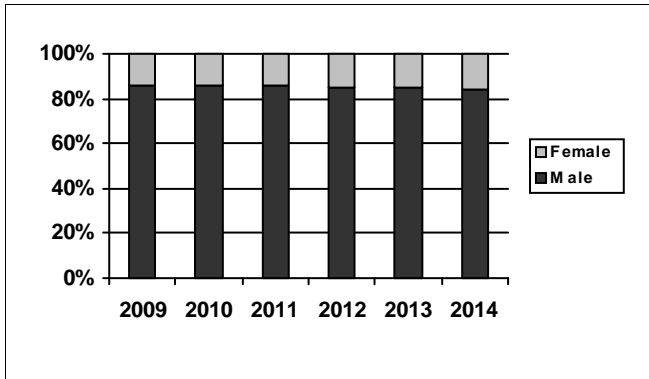
The first and second quarters of 2014 had the percentage of youth in a pre-disposition status at 54%, levels that have not been seen since the first quarter of 2010. The third quarter of 2014 percentage slowly declined to what has been the normal ratio over the past few years (e.g., 2011-2013 had an annual average of 51% to 52% pre-disposition).

Summary of Pre-Disposition in Juvenile Halls				
2009	2010	2011	2012	2013
56%	53%	51%	52%	52%

2014 Summary of Pre-Disposition Juvenile Halls				
Q1	Q2	Q3		Average
54%	54%	53%		54%

## Third Quarter Report, 2014 - Juvenile Hall Data

### Gender Distribution in Juvenile Halls

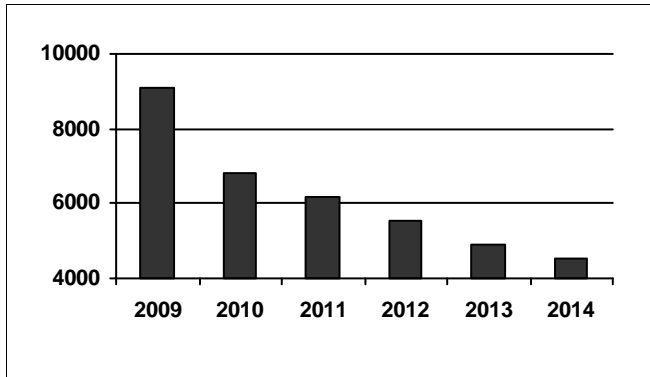


As we continue to see ADP decline in Juvenile Halls across the state, the gender distribution stays relatively consistent. Since 2007, girls have represented between 14% and 15% of the annual average Juvenile Hall population. However, the third quarter of 2014 marks the second quarter in a row where the percentage of girls in Juvenile Halls has been at 16%.

Summary of Males in Juvenile Halls				
2009	2010	2011	2012	2013
86%	86%	86%	85%	85%

2014 Summary of Males in Juvenile Hall			
Q1	Q2	Q3	Average
85%	84%	84%	84%

### Average Number of Juveniles Booked per Month

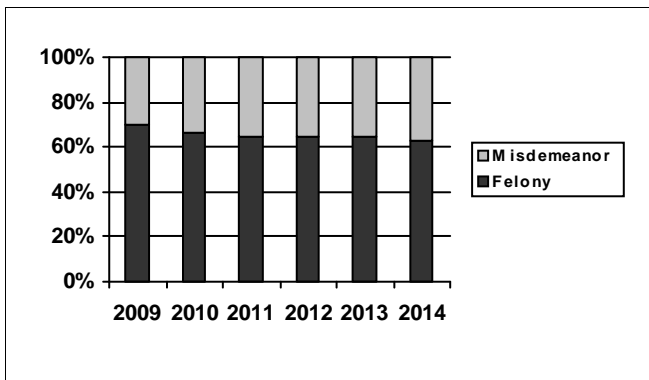


The average number of Juvenile Hall bookings per month decreased in the third quarter of 2014. With an average of 4,264 bookings per month, the third quarter of 2014 marks an all-time low.

Summary of Juveniles Booked per Month				
2009	2010	2011	2012	2013
9,079	6,802	6,202	5,556	4,881

2014 Summary of Monthly Bookings			
Q1	Q2	Q3	Average
4,581	4,739	4,264	4,527

### Distribution of Charge in Juvenile Halls



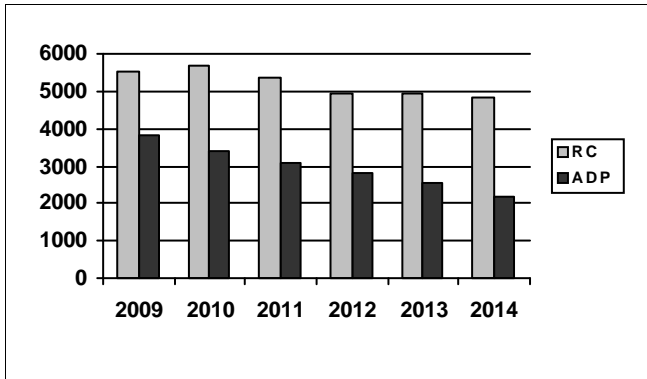
The annual average percentage of the Juvenile Hall population charged with a felony offense has been at 65% for the past three years (2011-2013). While the percentage of those with a felony offense was slightly lower at 64% during the first two quarters of 2014, the third quarter of 2014 marks the lowest percentage (61%) of those with a felony charge in the history of this report.

Summary of Felony Charges in Juvenile Halls				
2009	2010	2011	2012	2013
70%	66%	65%	65%	65%

2014 Summary of Felony Charge Juvenile Hall			
Q1	Q2	Q3	Average
64%	64%	61%	63%

# Third Quarter Report, 2014 - Camp Data

## RC and ADP for Camps

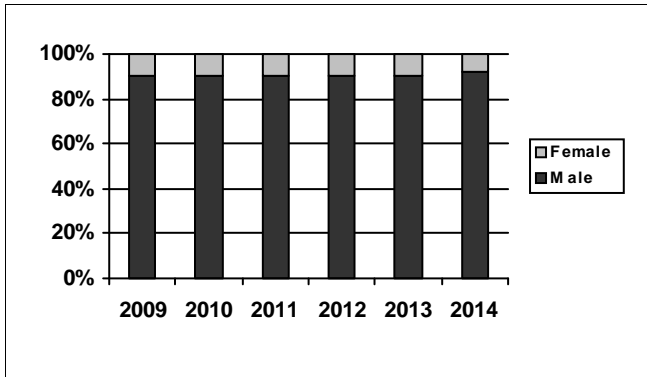


Similar to the ADP of Juvenile Halls, Camps continue to see a steady decrease in ADP. Across the state, Camp ADP continues to stay below the rated capacity. Based on historical trends, we expect this downward trend to continue into the fourth quarter of 2014.

Summary of Camp ADP				
2009	2010	2011	2012	2013
3,841	3,374	3,105	2,811	2,524

2014 Summary of Camp ADP			
Q1	Q2	Q3	Average
2,267	2,195	2,124	2,195

## Gender Distribution in Camps

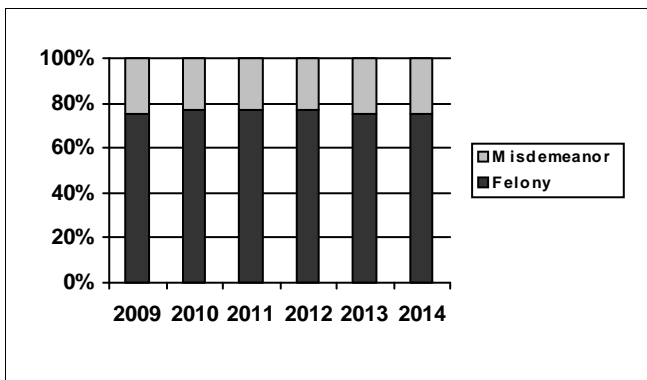


Since 2008, the annual average Camp population has consistently been made of 90% boys and 10% girls, with minor fluctuations between quarters. After a slight increase in the percentage of male and females in Camps during the second quarter of 2014, the third quarter distribution returned to the first quarter ratio of 91% males and 9% females.

Summary of Males in Camps				
2009	2010	2011	2012	2013
90%	90%	90%	90%	90%

2014 Summary of Males in Camps			
Q1	Q2	Q3	Average
91%	93%	91%	92%

## Distribution of Charge in Camps



After a rise in the second quarter of 2014 percentage of youth in Camps with a felony offense, the third quarter of 2014 saw a decrease in the percentage of youth charged with a felony. Even with the second quarter spike, the current 2014 average is consistent with last year's yearly annual average.

Summary of Felonies in Camps				
2009	2010	2011	2012	2013
75%	77%	77%	77%	75%

2014 Summary of Felonies in Camps			
Q1	Q2	Q3	Average
75%	77%	73%	75%



## INSTRUCTIONS FOR INTERPRETING THE SURVEY REPORT

The **Overall Capacity, Population and ADP page** is designed to present the JDPS results for the major reporting categories.

- **Capacity:** this category presents the RC in terms of the number of beds in juvenile halls and camps/ranches that meet the BSCC standards.
- **High One Day:** for each month in the quarter, each jurisdiction reports the juvenile hall and camp/ranch populations that together constituted the highest one-day count of the month.
- **Other:** this category refers to the sum of all juveniles who are receiving custody credit while on home supervision, with or without electronic monitoring, or are in alternative confinement programs.

The **County Breakout Report page** is designed to present county-specific information.

- **County comparison:** this page identifies the ADP for each county and the percent that county contributes to the total state juvenile detention population. The counties are ranked in descending order based on their percentage of the overall juvenile detention population in the state.

The **JDPS additional information page** is designed to present all the remaining JDPS results not already listed.

- **One Day Snapshot:** the percentages in this section are percentages of the total ADP for juvenile halls, camps/ranches, and other juveniles in the system.
- **Average number of days that one or more facilities in a county exceeded the RC:** this value is the result of taking all of the counties “number of days of crowding” and averaging the figures submitted by all the jurisdictions. If a jurisdiction had no crowding days, that jurisdiction was not included in the computation. In other words, the value presented indicates the typical number of crowding days per month experienced by jurisdictions that have had one or more days of crowding in the Third Quarter of Calendar Year 2014.
- **Average Length of Stay:** these numbers are averages for all juveniles in each category:
  - 1) “Juvenile Hall (all releases)” is computed by first taking the mean length of stay for all juveniles released from juvenile halls in a jurisdiction. Next, all the jurisdictions’ means are averaged to produce a statewide figure.
  - 2) “Juvenile Hall to Camps [ranches]” is computed in the same fashion, but includes only those juveniles released from juvenile hall and placed in a camp or ranch.
  - 3) “Juvenile Hall to other out-of-home placements (i.e. group homes or foster homes)” presents the average length of stay for that subset of juveniles.