

JUVENILE DETENTION PROFILE SURVEY



**FOURTH QUARTER
2011**

Corrections Standards Authority
Facilities Standards and Operations Division
600 Bercut Drive
Sacramento CA 95811
(916) 445-5073
www.csa.ca.gov

JUVENILE DETENTION PROFILE SURVEY

EXPLANATION OF RESULTS

The following link titles contain the Juvenile Detention Profile Survey results for the Fourth Quarter of Calendar Year 2011. **Capacity, Population and ADP Breakout** contains totals for major categories such as Highest One-Day Population, Average Daily Population (ADP), gender, and the age range of detained minors. **Breakout of Juveniles in Detention** contains information regarding counties' ADP and Rated Capacity (RC) breakouts and **Summary of Survey Results** contains information about a wide range of juvenile detention facility issues including crowding, mental health needs, average length of stay, and number of bookings.

Juvenile Hall Data – Part 1 & 2, and Camp Data contains trend information compiled from 2006 through the fourth quarter of calendar year 2011. The trend data is separated into Juvenile Hall related data and Camp related data.

Please keep the following in mind when reviewing this information:

- For Overall Capacity, Crowding (highest one-day population-the count of minors in detention on the day of each county's highest population) and ADP (the average daily detention population for the reporting period), we have complete data from all jurisdictions in the state that operate juvenile detention facilities.
- Each jurisdiction provides us with the average population, computed across all the days in the month, for each of the three months in the quarter. The weighted average across the three months is then computed for each jurisdiction (with the monthly averages weighted by the number of days in the month). The jurisdictions ADPs are then combined to produce the state's total ADP.
- For some variables (other than ADP), we did not receive complete data from all jurisdictions. In such instances, we used statistical procedures to estimate the statewide total.
- Felony/misdemeanor, gender counts, and age-range breakouts are based upon a one-day snapshot (on the 15th day of the final month of the quarter). These values are used to determine the percentage of the population in each felony/misdemeanor, gender, and age category. The percentages are then applied to the Total ADP to project the expected ADP in each of the felony/misdemeanor, gender, and age-range categories.
- In addition to the population breakdowns for juvenile halls and camps, the report contains like information for youth who were part of non-facility based, alternative to detention programs. Youth in that category are listed under "Other Detention". Other detention includes home supervision with and without electronic monitoring, day reporting centers, work programs and other alternatives to detention **for which youth are credited with custody time.**
- ***Please note:***
 - In early 2011, eight regional trainings were held for county reporters and contributors to the JDPS. When interpreting the JDPS results from the 2nd quarter of 2011 forward, please consider that the clarification of variable definitions and calculations which occurred at those trainings may explain some unanticipated differences when compared to prior quarters.
 - Each quarter, every county with juvenile detention facilities submits their data to the CSA. While we make every effort to review data for accuracy, including contacting individual counties for clarification, CSA cannot be responsible for data reporting errors made at the county level.

California Corrections Standards Authority
Juvenile Detention Profile Survey - 4th Quarter, 2011
Overall Capacity, Population and ADP

Overall Capacity and Population							
	JUVENILE HALL		CAMPS		OTHER	TOTAL	
ADP	4,896.6		2,910.7		1,700.1	9,507.3	
Percent of Total	51.5%		30.6%		17.9%	100.0%	
RC *	8,265.3		5,273.0			13,538.3	
High One Day	5,504.0		3,029.0			8,533.0	

Gender by Detention Type								
	JUVENILE HALL		CAMPS		OTHER		TOTAL	
GENDER	ADP	%	ADP	%	ADP	%	ADP	%
Male	4,192.4	85.6%	2,630.5	90.4%	1,397.6	82.2%	8,220.6	86.5%
Female	704.2	14.4%	280.1	9.6%	302.5	17.8%	1,286.7	13.5%
TOTAL	4,896.6	100.0%	2,910.7	100.0%	1,700.1	100.0%	9,507.3	100.0%

Disposition by Gender for Juvenile Halls							
	MALE		FEMALE		TOTAL		
DISPOSITION	Number	%	Number	%	Number	%	
Pre-Disposition	2,045.6	48.8%	369.0	52.4%	2,414.6	49.3%	
Post-Disposition	2,146.9	51.2%	335.1	47.6%	2,482.0	50.7%	
TOTAL	4,192.4	100.0%	704.2	100.0%	4,896.6	100.0%	

Disposition by Gender for Other Detention							
	MALE		FEMALE		TOTAL		
DISPOSITION	Number	%	Number	%	Number	%	
Pre-Disposition	596.5	42.7%	128.7	42.5%	725.2	42.7%	
Post-Disposition	801.1	57.3%	173.8	57.5%	974.9	57.3%	
TOTAL	1,397.6	100.0%	302.5	100.0%	1,700.1	100.0%	

Age Range by Type of Detention (One-Day Snapshot)							
	JUVENILE HALL		CAMPS		TOTAL		
AGE RANGES	Number	%	Number	%	Number	%	
Under 12	7.0	0.1%	1.0	0.0%	8.0	0.1%	
12 to 14	468.0	10.0%	175.0	5.9%	643.0	8.4%	
15 to 17	3,786.0	80.6%	2,276.0	76.2%	6,062.0	78.9%	
18 _Over	436.0	9.3%	535.0	17.9%	971.0	12.6%	
TOTAL	4,697.0	100.0%	2,987.0	100.0%	7,684.0	100.0%	

* RC is Rated Capacity which is the number of beds that comply with standards set forth in Title 24, California Code of Regulations.

**County Breakout Report - 4th Quarter, 2011
Facilities and Alternative Detention**

	County	Rated Capacity	Facilities Detention	Other Detention	ADP	Percent of Total	Cumulative Percent
1	Los Angeles	4,144	2,178.9	338.10	2,517.0	26.47%	26.47%
2	San Diego	1,105	693.2	216.04	909.3	9.56%	36.04%
3	Orange	797	554.6	78.09	632.6	6.65%	42.69%
4	Fresno	450	330.7	121.34	452.0	4.75%	47.45%
5	Santa Clara	538	242.4	163.10	405.5	4.26%	51.71%
6	San Bernardino	420	364.3	0.00	364.3	3.83%	55.54%
7	Kern	485	347.3	4.96	352.3	3.71%	59.25%
8	Alameda	463	283.0	37.71	320.7	3.37%	62.62%
9	Riverside	582	281.2	22.69	303.9	3.20%	65.82%
10	Sacramento	270	155.4	132.33	287.7	3.03%	68.84%
11	San Mateo	274	155.9	117.53	273.4	2.88%	71.72%
12	Tulare	330	181.2	89.39	270.6	2.85%	74.57%
13	Contra Costa	390	246.6	0.00	246.6	2.59%	77.16%
14	Monterey	190	152.0	35.90	187.9	1.98%	79.14%
15	San Francisco	234	104.3	62.64	167.0	1.76%	80.89%
16	Santa Barbara	272	165.7	0.00	165.7	1.74%	82.64%
17	Stanislaus	158	130.2	30.33	160.6	1.69%	84.32%
18	Sonoma	188	102.7	55.92	158.6	1.67%	85.99%
19	San Joaquin	224	148.7	0.00	148.7	1.56%	87.56%
20	Merced	120	85.0	52.17	137.2	1.44%	89.00%
21	Ventura	295	134.3	0.00	134.3	1.41%	90.41%
22	Solano	148	88.7	14.68	103.4	1.09%	91.50%
23	Kings	209	79.5	0.00	79.5	0.84%	92.34%
24	Madera	85	44.2	14.89	59.1	0.62%	92.96%
25	Placer	58	34.3	23.86	58.1	0.61%	93.57%
26	El Dorado	80	46.6	10.64	57.3	0.60%	94.17%
27	Butte	60	51.0	2.99	54.0	0.57%	94.74%
28	Yolo	90	37.9	14.92	52.8	0.56%	95.30%
29	Yuba	120	50.1	0.00	50.1	0.53%	95.82%
30	Shasta	56	25.7	14.63	40.3	0.42%	96.25%
31	Humboldt	44	26.6	10.17	36.8	0.39%	96.63%
32	Del Norte	62	33.0	0.00	33.0	0.35%	96.98%
33	San Luis Obispo	45	32.8	0.00	32.8	0.35%	97.33%
34	Santa Cruz	42	21.1	11.53	32.6	0.34%	97.67%
35	Napa	50	26.4	4.69	31.0	0.33%	98.00%
36	Nevada	60	21.0	6.34	27.3	0.29%	98.28%
37	Mendocino	43	23.3	0.00	23.3	0.24%	98.53%
38	Tehama	40	20.1	0.00	20.1	0.21%	98.74%
39	Imperial	72	18.1	0.00	18.1	0.19%	98.93%
40	Lake	40	11.0	6.36	17.3	0.18%	99.11%
41	Lassen	40	13.3	3.68	17.0	0.18%	99.29%
42	Siskiyou	33	15.7	0.00	15.7	0.16%	99.45%
43	Marin	40	14.3	0.48	14.8	0.16%	99.61%
44	San Benito	20	10.6	0.66	11.3	0.12%	99.73%
45	Glenn	22	10.6	0.00	10.6	0.11%	99.84%
46	Inyo	14	7.0	0.00	7.0	0.07%	99.91%
47	Trinity	28	6.7	0.00	6.7	0.07%	99.98%
48	Tuolumne	0	0.0	1.33	1.3	0.01%	100.00%
49	Mariposa	4	0.1	0.00	0.1	0.00%	100.00%
50	Mono	4	0.0	0.00	0.0	0.00%	100.00%
51	Sierra	0	0.0	0.00	0.0	0.00%	100.00%
		13,538	7,807.2	1,700.1	9,507.3	100.00%	

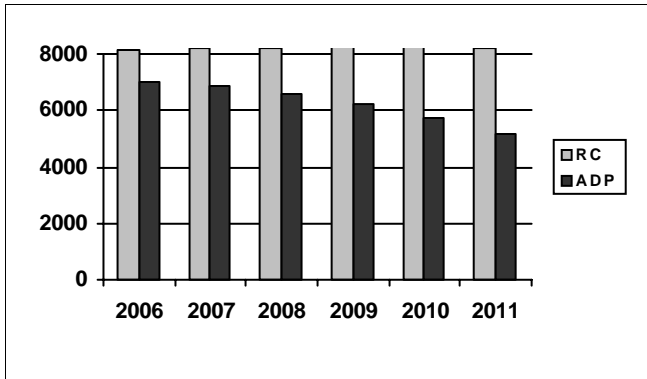
*ADP on County Breakout Report may not equal ADP on other Summary Reports due to rounding

Juvenile Detention Profile Survey

4th Quarter Report 2011	One Day Snapshot		Average Daily Population							
	Rated Capacity	Misdemeanor		Felony		Pre-Disposition		Post-Disposition		Total ADP
		Male	Female	Male	Female	Male	Female	Male	Female	
Juvenile Halls	8,265.3	13.8%	4.1%	30.4%	3.6%	2,045.6	369.0	2,146.9	335.1	4,896.6
Camps / Ranches	5,273.0	5.7%	1.3%	22.6%	2.0%			2,630.5	280.1	2,910.7
Other Juveniles in the System		Male	Female	Male	Female	Male	Female	Male	Female	Total ADP
Juveniles on home supervision with electronic monitoring		3.0%	0.7%	4.5%	1.0%	376.4	79.9	436.4	84.2	977.0
Juveniles on home supervision without electronic monitoring		1.7%	0.6%	2.8%	0.5%	216.4	46.3	235.2	63.1	561.1
Juveniles alternative confinement programs		0.5%	0.1%	1.0%	0.1%	3.7	2.4	129.5	26.4	162.0
Grand Totals		24.7%	6.8%	61.2%	7.3%	2,642.1	497.7	5,578.5	789.1	9,507.3
Mental Health Snapshot										
Number of open mental health cases this day									3,587.0	
Number of juveniles receiving psychotropic medication									1,538.7	
Crowding										
Average daily population of juveniles in other jurisdictions DUE TO LACK OF SPACE									0.0	
Number of juveniles released early DUE TO LACK OF SPACE									27.0	
Average number of days that one or more facilities in a county exceeded the Rated Capacity									4.0	
Average Bookings Per Month										
Number of Juvenile Hall bookings/admissions									5,590.1	
Number of bookings for weapon-related offenses									419.1	
Number of 601 bookings									18.7	
Number of 777 bookings									1,141.8	
Number of direct file {WIC 602(b) and 707(d)} bookings									53.1	
Final Month of the Quarter (One-Day Snapshot)										
Detained for 707b Offense									984.7	
Awaiting placement									441.0	
Awaiting transport to a camp									380.7	
Awaiting transfer to Youth Authority									55.0	
Court commitments to juvenile hall (Ricardo M)									565.1	
Found unfit per 707.01 WIC									81.7	
Direct files to Adult Court-602(b) and 707(d) WIC									364.0	
Hospitalized outside detention facility for MEDICAL CARE									12.0	
Hospitalized outside detention facility for MENTAL HEALTH CARE									5.4	
Believed to be criminal illegal aliens									133.8	
Average Length of Stay										
Juvenile Hall (all releases)									33.7	
Juvenile Hall to Camps									61.1	
Juvenile Hall to other out-of-home placements (i.e. group homes or foster homes)									63.8	
Juvenile Hall who were found unfit (per juvenile court)									525.4	
Juvenile Hall who were direct filings to adult court									422.8	
Camps (all releases)									143.7	
Cumulative Total for the Quarter										
Detention Behavior						Juvenile Halls		Camps / Ranches		Other Detention
Assaults by juveniles on staff						41.0		6.0		0.0
Escapes						9.0		87.0		11.2
Suicide Attempts						15.4		3.0		0.0
Suicides						0.0		0.0		0.0

Fourth Quarter Report, 2011 - Juvenile Hall Data

Rated Capacity RC and ADP for Juvenile Halls

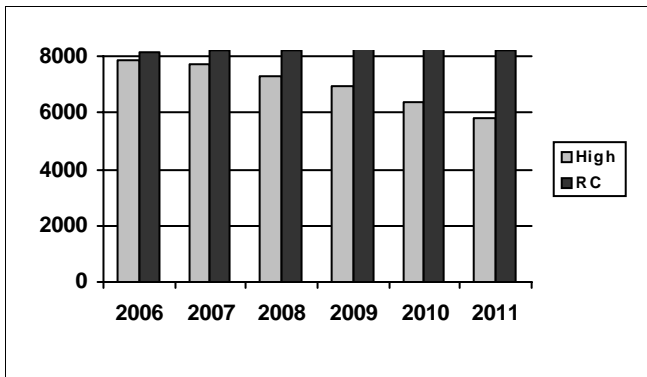


After a small increase in Juvenile Hall ADP in the Second Quarter of 2011, the ADP of juvenile halls continued to decline. The annual average ADP has dropped by 1,880 since 2006.

Summary of Juvenile Hall ADP				
2006	2007	2008	2009	2010
7,017	6,858	6,614	6,197	5,721

2011 Summary of Juvenile Hall ADP				
Q1	Q2	Q3	Q4	Average
5,261	5,325	5,070	4,897	5,137

Juvenile Hall Highest One-Day Population and RC

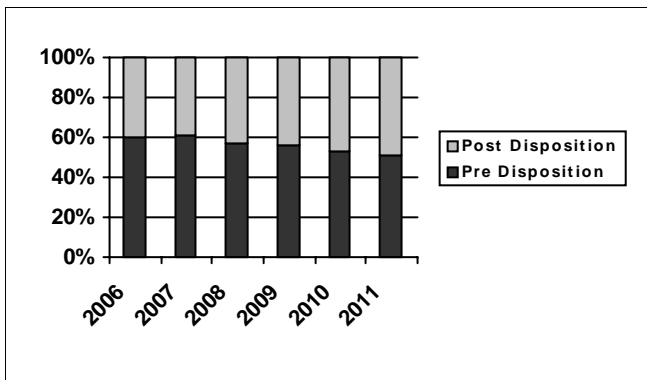


The growing gap between rated capacity and population on the high-day is an indication of the progress made statewide in reducing crowding.

Summary of Juvenile Hall Highest One Day				
2006	2007	2008	2009	2010
7,837	7,686	7,317	6,914	6,386

2011 Summary of Highest One-Day Population				
Q1	Q2	Q3	Q4	Average
5,933	6,019	5,693	5,504	5,786

Pre-Disposition in Juvenile Halls



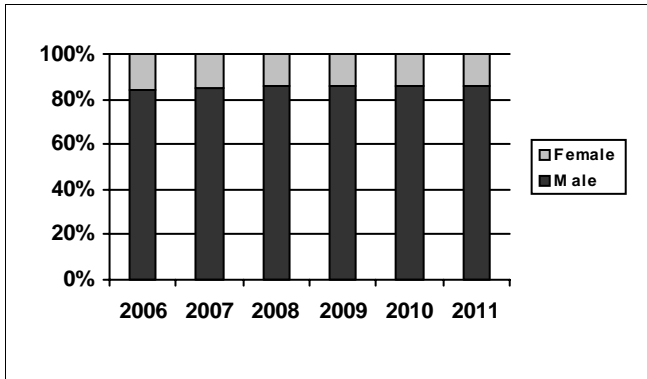
For the first time since this reporting began, the Fourth Quarter pre-disposition youth make up less than half of the juvenile hall population.

Summary of Pre-Disposition in Juvenile Halls				
2006	2007	2008	2009	2010
60%	61%	57%	56%	53%

2011 Summary of Pre-Disposition Juvenile Halls				
Q1	Q2	Q3	Q4	Average
52%	52%	51%	49%	51%

Fourth Quarter Report, 2011 - Juvenile Hall Data

Gender Distribution in Juvenile Halls

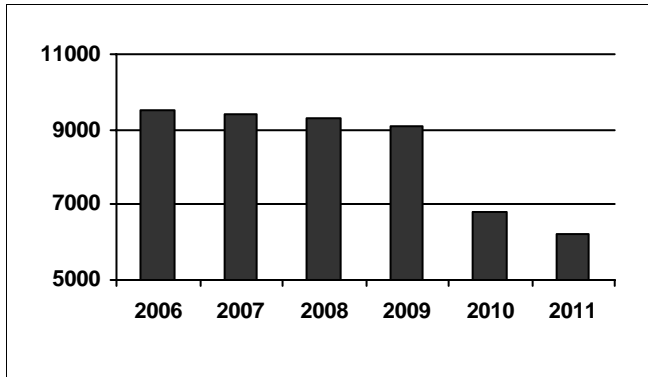


For the fourth year, girls make up 14% of the juvenile hall population.

Summary of Males in Juvenile Halls				
2006	2007	2008	2009	2010
84%	85%	86%	86%	86%

2011 Summary of Males in Juvenile Hall				
Q1	Q2	Q3	Q4	Average
86%	86%	86%	86%	86%

Average Number of Juveniles Booked per Month

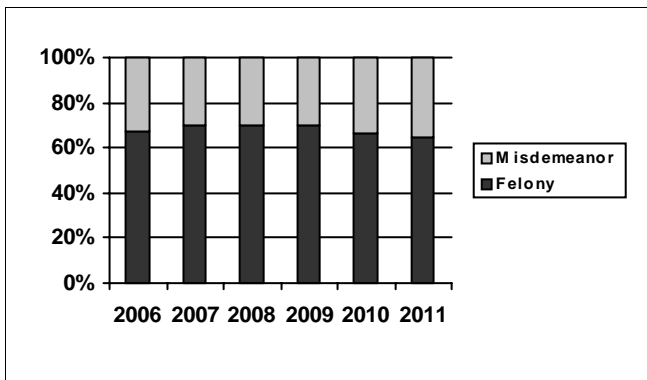


On average, more than 3,000 fewer youth are booked into juvenile halls monthly than in 2006.

Summary of Juveniles Booked per Month				
2006	2007	2008	2009	2010
9,539	9,422	9,325	9,079	6,802

2011 Summary of Monthly Bookings				
Q1	Q2	Q3	Q4	Average
6,593	6,605	6,032	5,590	6,202

Distribution of Charge in Juvenile Halls



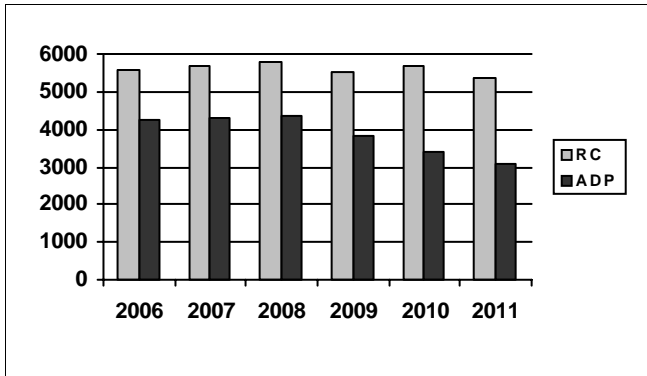
The percentage of felony offenders in juvenile halls decreased by 1% in 2011.

Summary of Felony Charges in Juvenile Halls				
2006	2007	2008	2009	2010
67%	70%	70%	70%	66%

2011 Summary of Felony Charge Juvenile Hall				
Q1	Q2	Q3	Q4	Average
66%	65%	65%	65%	65%

Fourth Quarter Report, 2011 - Camp Data

RC and ADP for Camps



Camp populations have continued a decline which began in 2008.

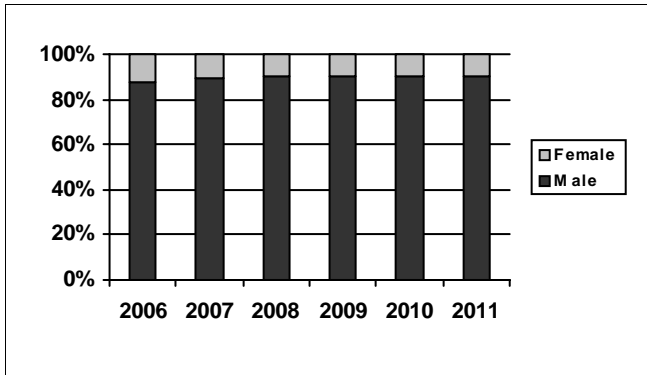
Summary of Camp ADP

2006	2007	2008	2009	2010	2011
4,252	4,278	4,338	3,841		3,374

2011 Summary of Camp ADP

Q1	Q2	Q3	Q4	Average
3,221	3,206	3,084	2,911	3,105

Gender Distribution in Camps



There has been little fluctuation in the gender distribution in camps. Girls made up only 10% of the population again in 2011.

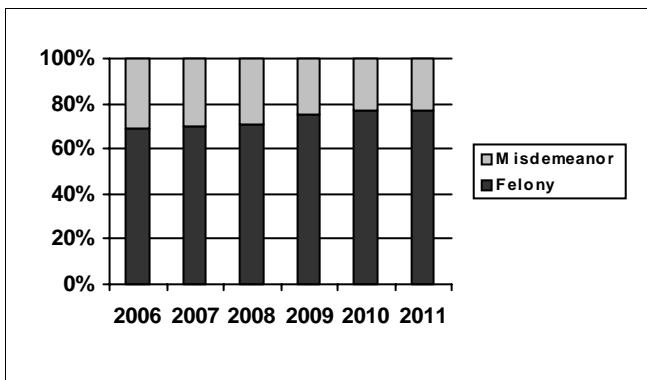
Summary of Males in Camps

2006	2007	2008	2009	2010	2011
88%	89%	90%	90%	90%	90%

2011 Summary of Males in Camps

Q1	Q2	Q3	Q4	Average
91%	91%	90%	90%	90%

Distribution of Charge in Camps



The percentage of felony offenders committed to county camp programs increased the last two quarters of 2011.

Summary of Felonies in Camps

2006	2007	2008	2009	2010	2011
69%	70%	71%	75%		77%

2011 Summary of Felonies in Camps

Q1	Q2	Q3	Q4	Average
76%	77%	78%	78%	77%

Instructions for Interpreting the Survey Report

Capacity, Population and ADP Breakout is designed to present the Juvenile Detention Profile Survey results for the major reporting categories.

- **Capacity:** this category presents the Rated Capacity (RC) in terms of the number of beds in juvenile halls and camps/ranches that meet the Corrections Standards Authority (CSA) standards.
- **High One-Day:** each jurisdiction reports for each month in the quarter, the juvenile hall and camp/ranch populations that, together, constituted the highest one-day count of the month.
- **Other:** this category refers to the sum of all juveniles who are receiving custody credit while on home supervision with or without electronic monitoring, or in alternative confinement programs.

Breakout of Juveniles in Detention is designed to present County-specific counts.

- **County-specific counts:** this page identifies the ADP for each county and the percent that county contributes to the total state juvenile detention population. The counties are ranked in descending order based on their percentage of the overall juvenile detention population in the state.

Summary of Survey Results is designed to present all the remaining Juvenile Detention Profile Survey results not already listed.

- **One-Day Snapshot:** the percentages in this section are percentages of the total ADP for juvenile halls, camps/ranches, and other juveniles in the system.
- **Average number of days that one or more facilities in a county exceeded the Rated Capacity:** this value is the result of taking all of the counties "number of days of crowding" and averaging the figures submitted by all the jurisdictions. If a jurisdiction had no crowding days, that jurisdiction was not included in the computation. In other words, the value presented indicates the typical number of crowding days per month experienced by jurisdictions that have had one or more days of crowding in the Fourth Quarter of Calendar Year 2011.
- **Average Length of Stay:** these numbers are averages for all juveniles in each category: 1) "juvenile hall (all releases)" is computed by first taking the mean length of stay for all juveniles released from juvenile halls in a jurisdiction. Next, all the jurisdictions' means are averaged to produce a statewide figure; 2) "juvenile hall to camps/ranches" is computed in the same fashion, but includes only those juveniles released from juvenile hall and placed in a camp or ranch; 3) "juvenile hall to other out-of-home placements" presents the average length of stay for that subset of juveniles.