

JAIL PROFILE SURVEY

1996, 2nd QUARTER SURVEY RESULTS

CORRECTIONS STANDARDS AND SERVICES DIVISION

BOARD OF CORRECTIONS

**STATE OF CALIFORNIA
600 Bercut Drive
Sacramento, CA 95814-0185
(916) 445-5073**

JAIL PROFILE SURVEY

EXPLANATION OF RESULTS

The following three pages contain the Jail Profile Survey results for the 2nd quarter of 1996. Page 1 contains the quarterly totals based upon the monthly and quarterly data submitted to us by the participating jurisdictions. Pages 2 and 3 show the trend data for variables we have been tracking for the last ten years. The remainder of this page provides explanations and clarifications of the data presented.

Page 1

- Unless otherwise noted, "projected totals" are based upon the average per day for the variable in question. For example, there were an average of 71,675 inmates per day in local jails (excluding Type I's) during the three month span of April to June 1996.
- For some variables, we did not receive data from all jurisdictions. We compute the percentage of the ADP which were housed in the jurisdictions that did supply us with data. For example, 93.95% of the jurisdictions indicated the number of felony inmates in their facilities. In these cases, we projected what the statewide number of felony inmates would have been if we had complete data from all the participating jurisdictions.
- The number of "Bookings" is the average of the monthly totals for April, May and June, 1996.
- For the following variables, the number presented are the totals as of the mid-quarter (i.e. May 15, 1996): Pretrial Release, Early Release, 2 and 3 Strikes, Felony Warrants, Misdemeanor Warrants, Juveniles in Custody and Undocumented Aliens.
- Assaults is the total number of serious inmate assaults on staff (resulting in a crime report), statewide, during the 2nd quarter of 1996.

Pages 2 and 3

- The data in the 10 Year Summary tables are based upon survey data which the Board has gathered since the early 1980's.
- Since Jail Profile Survey is a new program begun during the last quarter of 1995, we have no data for the first three quarters of 1995. In the future, the yearly average will be the average across the 12 calendar months. In 1995, the yearly figure reported is the fourth quarter average, since we do not have data from the first three quarters.

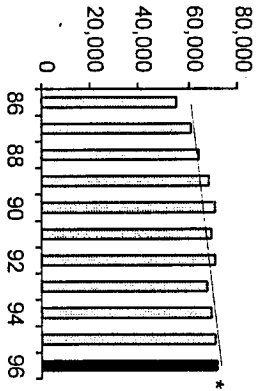
JAIL PROFILE SURVEY

2nd Quarter, 1996, Results

AVERAGE DAILY POPULATION

10 YEAR SUMMARY									
1986	1987	1988	1989	1990	1991	1992	1993	1994	1995
55,594	60,802	64,335	68,535	70,845	68,923	70,853	67,576	69,233	71,107

QUARTERLY RESULTS				
1ST QTR	2ND QTR	3RD QTR	4TH QTR	Average
1995			71,107	71,107
1996	71,117	71,675		71,396

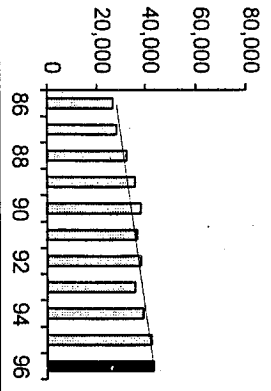


The Average Daily Population has not changed significantly since the initiation of the Jail Profile Survey in the last quarter of 1995. As we stated last quarter, this is not an accurate reflection of the need for jail space, since over 25,000 people per month are not incarcerated or are released early due to lack of jail space. We assume that the stability of the Average Daily Population statistic is due to the fact that our jail systems are filled to capacity, and that the number will not rise very much until there is an increase in jail capacity.

NON-SENTENCED ADP

10 YEAR SUMMARY									
1986	1987	1988	1989	1990	1991	1992	1993	1994	1995
26,330	28,528	31,959	35,264	37,630	36,064	38,110	35,899	39,122	42,237

QUARTERLY RESULTS				
1ST QTR	2ND QTR	3RD QTR	4TH QTR	Average
1995			42,237	42,237
1996	42,813	42,771		42,792



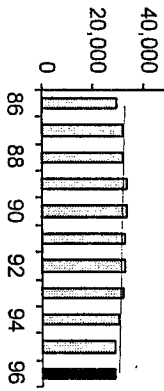
The non-sentenced population has been rising steadily. During this quarter there was a slight reduction, but we do not believe that this constitutes a downward trend. As we continue to gather data on a monthly basis regarding this variable, we will be better able to discern any seasonal and yearly trends. The average non-sentenced population for the first six months of 1996 is higher than the last quarter of 1995.

SENTENCED ADP

10 YEAR SUMMARY									
1986	1987	1988	1989	1990	1991	1992	1993	1994	1995
29,264	32,274	32,376	33,271	33,215	32,859	32,743	31,677	30,142	28,870

QUARTERLY RESULTS				
1ST QTR	2ND QTR	3RD QTR	4TH QTR	Average
1995			28,870	28,870
1996	28,305	28,904		28,605

The sentenced population grew fairly rapidly between 1985 and 1989. Since then, however, the sentenced population has been declining. In fact, the sentenced population for the 1st and 2nd quarters of 1996 was lower than it was in 1986. The sentenced population for the 2nd quarter of 1996 went up slightly, but the 1996 monthly average remains lower than the average for the last quarter of 1995.



*The graph illustrates the values in the 10 Year Summary table. The solid black bar in the graph indicates the monthly average for the current year, for the variable in question. For example, at the first quarter of 1996, the black bar is the average of monthly figures for the months of April, May and June 1996.

JAIL PROFILE SURVEY

2nd Quarter, 1996, Results

Average Daily Population (ADP)

Highest One Day Count ^a	[99.39%] ^b	74,820 ^c
ADP for This Quarter	[100.0%]	71,675 ^d
Holding Areas	[99.39%]	973
Average "Under the Roof" ^e		72,648

Projected
Total

Categories of Inmates

Felony	[93.95%]	48,716
Misdemeanor	[93.95%]	22,793
Unspecified		166
Total		71,675
Non-Sentenced Males	[99.87%]	38,055
Non-Sentenced Females	[99.87%]	4,716
Sentenced Males	[99.87%]	25,192
Sentenced Females	[99.87%]	3,712
Total		71,675
Maximum Security Inmates	[97.83%]	34,700
Medium Security Inmates	[97.83%]	22,457
Minimum Security Inmates	[97.83%]	13,673
Unspecified		845
Total		71,675

Special Use Cells

Medical Beds	[98.83%]	954
Mental Beds	[98.80%]	1,322

^a The sum of highest one day inmate population counts in the 61 jurisdictions for the quarter.
^b This percentage is the percentage of the total statewide ADP housed in jurisdictions that provided data for this variable (i.e., the sample on which the projection is based).
^c Unless otherwise indicated, the numbers reported in this table are monthly averages.
^d The Average Daily Population for the quarter, for the 61 jurisdictions in the Board of Corrections program.

Inmates from Other Jurisdictions

Inmates Housed on Federal Contract	[99.39%]	1,418
Inmates Housed on Contract with CDC	[99.39%]	926
Inmates from Other Counties on Contract	[99.49%]	120
Inmates Awaiting Transport	[91.36%]	1,434
Total		3,898

Projected
Total

Number of People Released Per Month Due to Lack of Space

Pretrial Release	[97.75%]	6,826
Early Release	[99.11%]	20,686
Total		27,512

Inmates with 2 and 3 Strikes

2 Strike Inmates	[73.55%]	3,941 ^f
3 Strike Inmates	[87.52%]	2,802 ^f
Total		6,743

Unserviced Warrants

Felony Warrants	[80.14%]	262,697 ^f
Misdemeanor Warrants	[80.04%]	2,516,438
Total		2,779,135

Other Jail Profile Survey Variables

Bookings per Month	[99.27%]	104,195
Juveniles in Custody	[94.40%]	79 ^f
Undocumented Aliens	[79.58%]	6,621 ^f
Assaults	[91.25%]	196 ^g

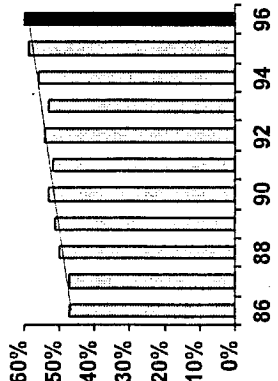
^e The term "Under the Roof" is the sum of the Average Daily Population plus the number of inmates in Holding Areas.
^f The total as of mid-quarter.
^g The total for the quarter.

JAIL PROFILE SURVEY

2nd Quarter, 1996, Results

PERCENTAGE NON-SENTENCED

10 YEAR SUMMARY										
Year	1986	1987	1988	1989	1990	1991	1992	1993	1994	1995
Percentage	47%	47%	50%	51%	53%	52%	54%	53%	56%	59%



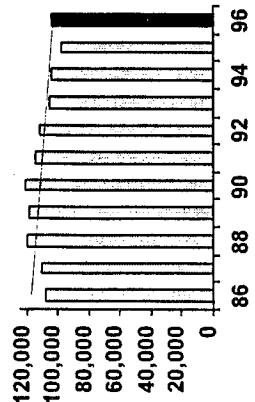
The percentage of jail population which is non-sentenced versus sentenced has been gradually increasing since the mid-1980's when the non-sentenced and sentenced populations were fairly equal. The rate of change has been a little over 1% per year, so that we would not expect much change from one quarter to another, as is the case for the 2nd quarter of 1996.

QUARTERLY RESULTS

Year	1995	1996
1st QTR		60%
2nd QTR		60%
3rd QTR		
4th QTR	59%	
Average	59%	60%

AVERAGE NUMBER OF PERSONS BOOKED

10 YEAR SUMMARY										
Year	1986	1987	1988	1989	1990	1991	1992	1993	1994	1995
Number	107,675	111,039	119,838	118,253	120,716	115,313	112,009	105,593	103,996	97,694



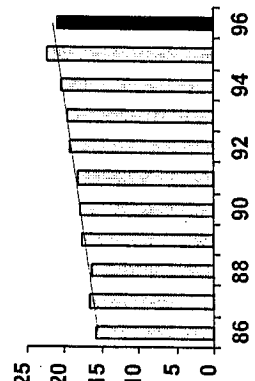
The number of persons booked decreased between 1990 and 1995. The average number booked per month in the first quarter of 1996 rose by about 7,000 over the last quarter of 1995. For the second quarter of 1996, the average number of bookings per month was similar to the first quarter figure. Therefore, we are uncertain what the trend in bookings will be.

QUARTERLY RESULTS

Year	1995	1996
1st QTR		104,556
2nd QTR		104,195
3rd QTR		
4th QTR	97,694	
Average	97,694	104,376

AVERAGE LENGTH OF STAY

10 YEAR SUMMARY										
Year	1986	1987	1988	1989	1990	1991	1992	1993	1994	1995
Length	15.7	16.7	16.3	17.6	17.9	18.2	19.2	19.5	20.3	22.3



The Average Length of Stay statistic has remained constant at 20.9 days for the 2nd quarter of 1996. While this is lower than the 22.3 figure associated with the last quarter of 1995, we suspect that the reduction is a function of the increase in bookings (which are part of the Average Length of Stay calculation). We suspect that over time, the Average Length of Stay will continue to increase.

QUARTERLY RESULTS

Year	1995	1996
1st QTR		20.9
2nd QTR		20.9
3rd QTR		
4th QTR	22.3	
Average	22.3	20.9

